



Everest Biotech Ltd  
Cherwell Innovation Centre  
77 Heyford Park  
Upper Heyford  
Oxfordshire  
OX25 5HD, United Kingdom

[everestbiotech.com](http://everestbiotech.com)

[sales@everestbiotech.com](mailto:sales@everestbiotech.com)

[support@everestbiotech.com](mailto:support@everestbiotech.com)

Tel +44 1869 238326

Fax +44 1869 238327

**Research Use Only. Not for  
diagnostic or therapeutic use.**

Storage: For long-term storage  
keep aliquots at -20°C. (Store no  
longer than 12 months at 4°C).  
Minimize freezing and thawing.

## EB07061 - Goat Anti-14-3-3 sigma / Stratifin Antibody

Size: 100µg specific antibody in 200µl



### Target Protein

**Principal Names:** YWHAS, SFN, HGNC:10773, stratifin, 14-3-3sigma

**Official Symbol:** SFN

**Accession Number(s):** NP\_006133.1

**Human GeneID(s):** [2810](#)

**Non-Human GeneID(s):** 55948 (mouse), 313017 (rat)

### Immunogen

Peptide with sequence C-DLHTLSEDSYKDST, from the internal region of the protein sequence according to NP\_006133.1.

Please note the [peptide](#) is available for sale.

### Purification and Storage

Purified from goat serum by ammonium sulphate precipitation followed by antigen affinity chromatography using the immunizing peptide.

Supplied at 0.5 mg/ml in Tris saline, 0.02% sodium azide, pH7.3 with 0.5% bovine serum albumin.

Aliquot and store at -20°C. Minimize freezing and thawing.

### Applications Tested

**Peptide ELISA:** antibody detection limit dilution 1:64000.

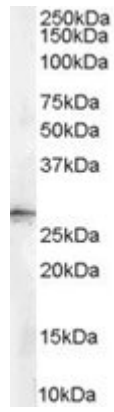
**Western blot:** Approx. 28kDa band observed in Human Skin lysates (calculated MW of 27.8kDa according to NP\_006133.1). Recommended concentration: 0.1-0.3µg/ml.

**IHC:** In paraffin embedded Human Skin shows strong nuclear staining in selected cells of the basal layer. Recommended concentration, 2-3µg/ml.

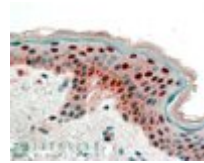
### Species Reactivity

**Tested:** Human

**Expected from sequence similarity:** Human, Mouse, Rat, Dog, Pig



EB07061 (0.1 $\mu$ g/ml) staining of human skin lysate (35 $\mu$ g protein in RIPA buffer). Primary incubation was 1 hour. Detected by chemiluminescence.



EB07061 (2.5 $\mu$ g/ml) staining of paraffin embedded Human Skin. Steamed antigen retrieval with citrate buffer pH 6, AP-staining.