



Everest Biotech Ltd  
Cherwell Innovation Centre  
77 Heyford Park  
Upper Heyford  
Oxfordshire  
OX25 5HD, United Kingdom

[everestbiotech.com](http://everestbiotech.com)

[sales@everestbiotech.com](mailto:sales@everestbiotech.com)

[support@everestbiotech.com](mailto:support@everestbiotech.com)

Tel +44 1869 238326

Fax +44 1869 238327

**Research Use Only. Not for diagnostic or therapeutic use.**

Storage: For long-term storage keep aliquots at -20°C. (Store no longer than 12 months at 4°C). Minimize freezing and thawing.

## EB06230 - Goat Anti-4E-T / EIF4ENIF1 Antibody

Size: 100µg specific antibody in 200µl



### Target Protein

**Principal Names:** OTTHUMP00000063276, FLJ26551, eIF4E-transporter, eukaryotic translation initiation factor 4E nuclear import factor 1, 2610509L04Rik, FLJ21601, Clast4, 4E-T, EIF4ENIF1

**Official Symbol:** EIF4ENIF1

**Accession Number(s):** NP\_062817.2; NP\_001157974.1

**Human GeneID(s):** [56478](#)

**Non-Human GeneID(s):** 74203 (mouse)

**Important Comments:** This antibody is expected to recognise isoform 1 (NP\_062817.2) and isoform b (NP\_001157974.1). Reported variants represent identical protein (NP\_062817.2; NP\_001157973.1).

### Immunogen

Peptide with sequence C-AKVISVDELEYRQ, from the C Terminus of the protein sequence according to NP\_062817.2; NP\_001157974.1.

Please note the [peptide](#) is available for sale.

### Purification and Storage

Purified from goat serum by ammonium sulphate precipitation followed by antigen affinity chromatography using the immunizing peptide.

Supplied at 0.5 mg/ml in Tris saline, 0.02% sodium azide, pH7.3 with 0.5% bovine serum albumin.

Aliquot and store at -20°C. Minimize freezing and thawing.

### Applications Tested

**Peptide ELISA:** antibody detection limit dilution 1:32000.

**Western blot:** Approx 140-150kDa band observed in 293 lysates (predicted size of approx. 108kDa according to NP\_062817.1, however our observation agrees with that of Dostie et al (see below) ). Recommended for use at 0.25-0.5µg/ml

**IHC:** In paraffin embedded Human Pancreas shows strong staining of cytoplasm in acinar cells-. Recommended concentration, 5-10µg/ml.

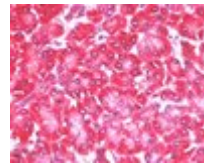
### Species Reactivity

**Tested:** Human

**Expected from sequence similarity:** Human, Mouse, Rat, Dog, Pig, Cow



EB06230 staining (0.25µg/ml) of 293 lysate (RIPA buffer, 35µg total protein per lane). Primary incubated for 1 hour. Detected by western blot using chemiluminescence.



EB06230 (5µg/ml) staining of paraffin embedded Human Pancreas. Steamed antigen retrieval with citrate buffer pH 6, AP-staining.