



## UK Office

### Everest Biotech Ltd

Cherwell Innovation Centre  
77 Heyford Park  
Upper Heyford  
Oxfordshire  
OX25 5HD  
UK

Enquiries:

[info@everestbiotech.com](mailto:info@everestbiotech.com)

Sales:

[sales@everestbiotech.com](mailto:sales@everestbiotech.com)

Tech support:

[support@everestbiotech.com](mailto:support@everestbiotech.com)

Tel: +44 (0)1869 238326

[www.everestbiotech.com](http://www.everestbiotech.com)

**Research Use Only. Not for  
diagnostic or therapeutic use.**

## EB08260 - Goat Anti-AADAT (int.) Antibody

Size: 100µg specific antibody in 200µl



### Target Protein

**Principal Names:** AADAT, aminoadipate aminotransferase, KAT2, KATII, L

kynurenine/alpha aminoadipate aminotransferase, L-kynurenine/alpha-aminoadipate  
aminotransferase, alpha-aminoadipate aminotransferase, kynurenine aminotransferase II

**Official Symbol:** AADAT

**Accession Number(s):** NP\_057312.1; NP\_872603.1

**Human GeneID(s):** [51166](#)

**Important Comments:** Both reported variants represent identical protein (NP\_057312.1  
and NP\_872603.1).

### Immunogen

Peptide with sequence C-DRVIDFYSNQKD, from the internal region of the protein  
sequence according to NP\_057312.1; NP\_872603.1.

Please note the [peptide](#) is available for sale.

### Purification and Storage

Purified from goat serum by ammonium sulphate precipitation followed by antigen affinity  
chromatography using the immunizing peptide.

Supplied at 0.5 mg/ml in Tris saline, 0.02% sodium azide, pH7.3 with 0.5% bovine serum  
albumin.

Aliquot and store at -20°C. Minimize freezing and thawing.

### Applications Tested

**Peptide ELISA:** antibody detection limit dilution 1:32000.

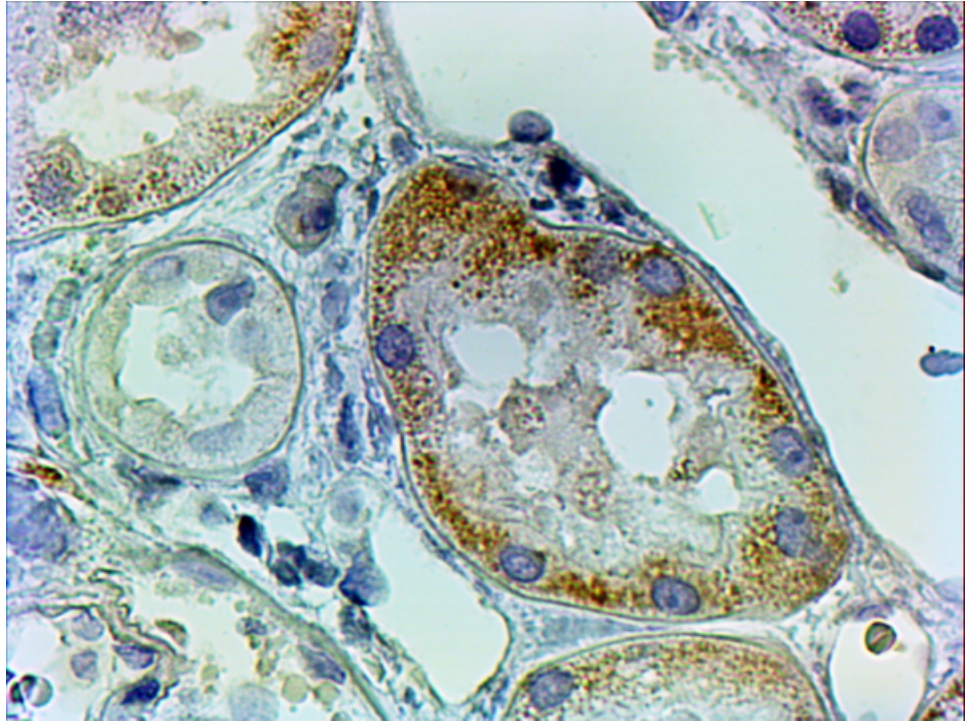
**IHC:** In paraffin embedded Human Kidney shows mitochondrial staining in PCT.

Recommended concentration, 2-4µg/ml.

### Species Reactivity

**Tested:** Human

**Expected from sequence similarity:** Human



EB08260 (2µg/ml) staining of paraffin embedded Human Kidney. Steamed antigen retrieval with citrate buffer pH 6, HRP-staining.