



International Office

Everest Biotech Ltd

Vector Laboratories, Inc.
6737 Mowry Ave
Newark, CA 94560
United States

Customer Service:

customerservice@vectorlabs.com

Technical Service:

technical@vectorlabs.com

Tel: +1 (800) 227-6666

www.everestbiotech.com

**Research Use Only. Not for
diagnostic or therapeutic use.**

EB08616 - Goat Anti-ABCA5 Antibody

Size: 100µg specific antibody in 200µl



Target Protein

Principal Names: ABCA5, ATP-binding cassette, sub-family A (ABC1), member 5, ABC13, DKFZp451F117, DKFZp779N2435, FLJ16381, ATP-binding cassette A5, ATP-binding cassette, sub-family A , member 5

Official Symbol: ABCA5

Accession Number(s): NP_758424.1

Human GeneID(s): [23461](#)

Important Comments: Reported variants represent identical protein: NP_061142.2 and NP_758424.1

Immunogen

Peptide with sequence DYSSETSEDDSLKC, from the internal region of the protein sequence according to NP_758424.1.

Please note the [peptide](#) is available for sale.

Purification and Storage

Purified from goat serum by ammonium sulphate precipitation followed by antigen affinity chromatography using the immunizing peptide.

Supplied at 0.5 mg/ml in Tris saline, 0.02% sodium azide, pH7.3 with 0.5% bovine serum albumin.

Aliquot and store at -20°C. Minimize freezing and thawing.

Applications Tested

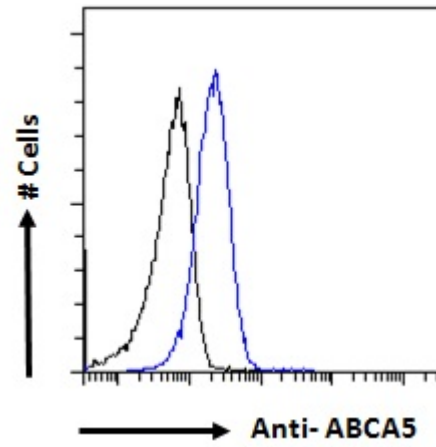
Peptide ELISA: antibody detection limit dilution 1:1000.

Flow Cytometry: Flow cytometric analysis of HepG2 cells. Recommended concentration: 10ug/ml.

Species Reactivity

Tested: Human

Expected from sequence similarity: Human



EB08616 Flow cytometric analysis of paraformaldehyde fixed HepG2 cells (blue line), permeabilized with 0.5% Triton. Primary incubation 1hr (10ug/ml) followed by Alexa Fluor 488 secondary antibody (1ug/ml). IgG control: Unimmunized goat IgG (black line) followed by Alexa Fluor 488 secondary antibody.