



## UK Office

### Everest Biotech Ltd

Cherwell Innovation Centre  
77 Heyford Park  
Upper Heyford  
Oxfordshire  
OX25 5HD  
UK

Enquiries:

[info@everestbiotech.com](mailto:info@everestbiotech.com)

Sales:

[sales@everestbiotech.com](mailto:sales@everestbiotech.com)

Tech support:

[support@everestbiotech.com](mailto:support@everestbiotech.com)

Tel: +44 (0)1869 238326

Fax: +44 (0)1869 238327

## US Office

### Everest Biotech c/o Abcore

405 Maple Street, Suite A106  
Ramona,  
CA 92065  
USA

Inquiries:

[info@everestbiotech.com](mailto:info@everestbiotech.com)

Sales:

[usasales@everestbiotech.com](mailto:usasales@everestbiotech.com)

Tech support:

[support@everestbiotech.com](mailto:support@everestbiotech.com)

Tel: 888-320-4628 (toll-free)

Fax: 888-841-9041

[www.everestbiotech.com](http://www.everestbiotech.com)

**Research Use Only. Not for  
diagnostic or therapeutic use.**

## EB09740-B - Goat Anti-ACAT1 (aa257-269), Biotinylated Antibody

Size: 100µg specific antibody in 200µl



### Target Protein

**Principal Names:** ACAT1, acetyl-Coenzyme A acetyltransferase 1, ACAT, MAT, T2, THIL, acetoacetyl Coenzyme A thiolase, acetyl-CoA acetyltransferase 1, mitochondrial acetoacetyl-CoA thiolase

**Official Symbol:** ACAT1

**Accession Number(s):** NP\_000010.1

**Human GeneID(s):** [38](#)

**Non-Human GeneID(s):** 110446 (mouse), 25014 (rat)

### Immunogen

Peptide with sequence C-KRVDFSKVPLKT., from the internal region of the protein sequence according to NP\_000010.1.

Please note the [peptide](#) is available for sale.

### Purification and Storage

Purified from goat serum by ammonium sulphate precipitation followed by antigen affinity chromatography using the immunizing peptide.

Supplied at 0.5 mg/ml in Tris saline, 0.02% sodium azide, pH7.3 with 0.5% bovine serum albumin.

Aliquot and store at -20°C. Minimize freezing and thawing.

### Applications Tested

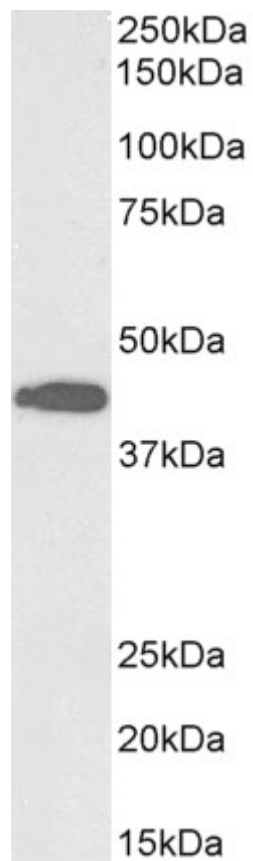
**Peptide ELISA:** antibody detection limit dilution 1:8000.

**Western blot:** Approx 45kDa band observed in Mouse Liver lysates (calculated MW of 44.8kDa according to Mouse NP\_659033.1). See non-biotinylated parental product's datasheet for further QC data. Recommended concentration: 0.1-0.3µg/ml.

### Species Reactivity

**Tested:** Human, Mouse, Rat

**Expected from sequence similarity:** Human, Mouse, Rat, Cow



Biotinylated EB09740 (0.1µg/ml) staining of Mouse Liver lysate (35µg protein in RIPA buffer), exactly mirroring its parental non-biotinylated product. Primary incubation was 1 hour. Detected by chemiluminescence, using streptavidin-HRP and using NAP blocker as a substitute for skimmed milk.