



## UK Office

### Everest Biotech Ltd

Cherwell Innovation Centre  
77 Heyford Park  
Upper Heyford  
Oxfordshire  
OX25 5HD  
UK

Enquiries:

[info@everestbiotech.com](mailto:info@everestbiotech.com)

Sales:

[sales@everestbiotech.com](mailto:sales@everestbiotech.com)

Tech support:

[support@everestbiotech.com](mailto:support@everestbiotech.com)

Tel: +44 (0)1869 238326

Fax: +44 (0)1869 238327

## US Office

### Everest Biotech c/o Abcore

405 Maple Street, Suite A106  
Ramona,  
CA 92065  
USA

Inquiries:

[info@everestbiotech.com](mailto:info@everestbiotech.com)

Sales:

[usasales@everestbiotech.com](mailto:usasales@everestbiotech.com)

Tech support:

[support@everestbiotech.com](mailto:support@everestbiotech.com)

Tel: 888-320-4628 (toll-free)

Fax: 888-841-9041

[www.everestbiotech.com](http://www.everestbiotech.com)

**Research Use Only. Not for  
diagnostic or therapeutic use.**

## EB13094 - Goat Anti-ACE2 (N Terminal) Antibody

Size: 100µg specific antibody in 200µl



### Target Protein

**Principal Names:** ACE 2 antibody, ACE related carboxypeptidase antibody, ACE-related carboxypeptidase antibody, ACE2 antibody, ACE2\_HUMAN antibody, ACEH antibody, Angiotensin converting enzyme 2 antibody, Angiotensin converting enzyme homolog antibody, Angiotensin converting enzyme like protein antibody, Angiotensin I Converting Enzyme (peptidyl dipeptidase A)

**Official Symbol:** ACE2

**Accession Number(s):** NP\_001358344.1

**Human GeneID(s):** [59272](#)

### Immunogen

Peptide with sequence PROPRIETARY-C, from the N Terminus of the protein sequence according to NP\_001358344.1.

Please note the [peptide](#) is available for sale.

### Purification and Storage

Purified from goat serum by ammonium sulphate precipitation followed by antigen affinity chromatography using the immunizing peptide.

Supplied at 0.5 mg/ml in Tris saline, 0.02% sodium azide, pH7.3 with 0.5% bovine serum albumin.

Aliquot and store at -20°C. Minimize freezing and thawing.

### Applications Tested

**Peptide ELISA:** antibody detection limit dilution 1:32000.

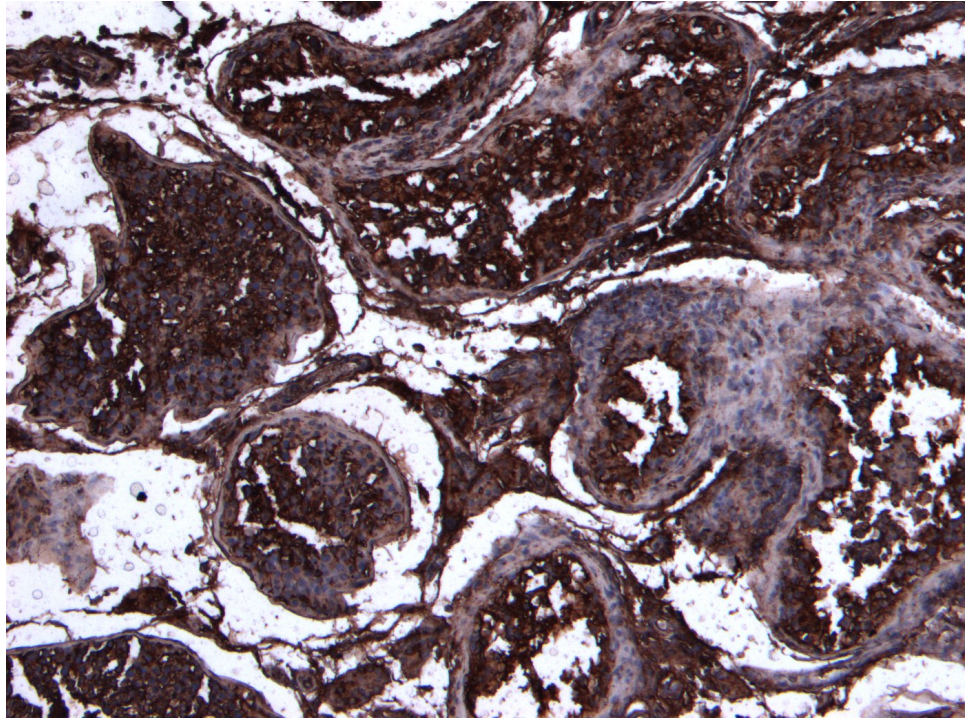
**IHC:** Paraffin embedded Human Testis. Recommended concentration: 8µg/ml.

A customer reported weak staining on paraffin embedded Human Kidney, at a concentration of 5ug/ml.

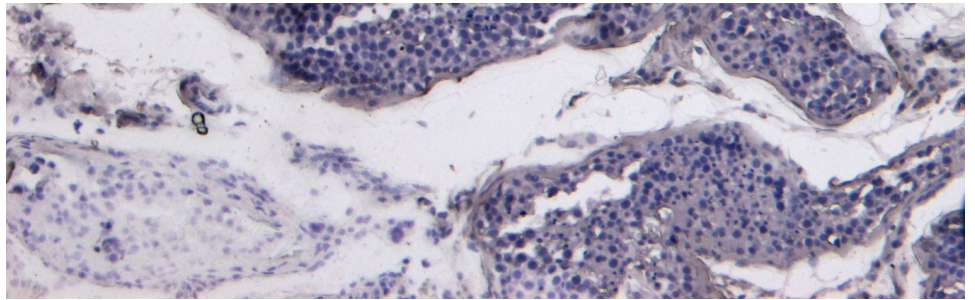
### Species Reactivity

**Tested:** Human

**Expected from sequence similarity:** Human



EB13094 (8 $\mu$ g/ml) staining of paraffin embedded Human Testis. Heat induced antigen retrieval with citrate buffer pH 6, HRP-staining.



EB13094 Negative Control showing staining of paraffin embedded Human Testis, with no primary antibody.