



UK Office

Everest Biotech Ltd

Cherwell Innovation Centre
77 Heyford Park
Upper Heyford
Oxfordshire
OX25 5HD
UK

Enquiries:

info@everestbiotech.com

Sales:

sales@everestbiotech.com

Tech support:

support@everestbiotech.com

Tel: +44 (0)1869 238326

Fax: +44 (0)1869 238327

US Office

Everest Biotech c/o Abcore

405 Maple Street, Suite A106
Ramona,
CA 92065
USA

Inquiries:

info@everestbiotech.com

Sales:

usasales@everestbiotech.com

Tech support:

support@everestbiotech.com

Tel: 888-320-4628 (toll-free)

Fax: 888-841-9041

www.everestbiotech.com

**Research Use Only. Not for
diagnostic or therapeutic use.**

EB09487 - Goat Anti-ACO1 / Aconitase 1 Antibody

Size: 100µg specific antibody in 200µl



Target Protein

Principal Names: ACO1, aconitase 1, soluble, ACONS, IREB1, IREBP, IREBP1, IRP1, OTTHUMP00000021176, OTTHUMP00000021177, OTTHUMP00000045233, aconitase 1, aconitate hydratase, citrate hydro-lyase, ferritin repressor protein, iron regulatory protein 1, iron-responsive element binding protein 1

Official Symbol: ACO1

Accession Number(s): NP_002188.1

Human GeneID(s): [48](#)

Non-Human GeneID(s): 11428 (mouse), 50655 (rat)

Immunogen

Peptide with sequence C-QVDFNRRADSLQKNQ, from the internal region of the protein sequence according to NP_002188.1.

Please note the [peptide](#) is available for sale.

Purification and Storage

Purified from goat serum by ammonium sulphate precipitation followed by antigen affinity chromatography using the immunizing peptide.

Supplied at 0.5 mg/ml in Tris saline, 0.02% sodium azide, pH7.3 with 0.5% bovine serum albumin.

Aliquot and store at -20°C. Minimize freezing and thawing.

Applications Tested

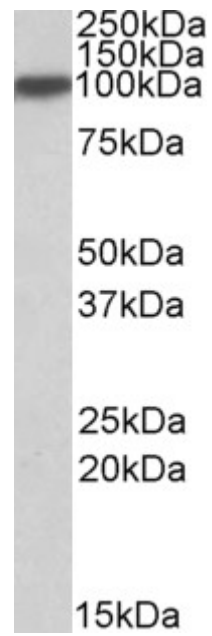
Peptide ELISA: antibody detection limit dilution 1:8000.

Western blot: Approx 100kDa band observed in Human Liver lysates (calculated MW of 98.4kDa according to NP_002188.1). Recommended concentration: 0.1-0.3µg/ml.

Species Reactivity

Tested: Human

Expected from sequence similarity: Human, Mouse, Rat, Cow



EB09487 (0.1µg/ml) staining of Human Liver lysate (35µg protein in RIPA buffer). Primary incubation was 1 hour.
Detected by chemiluminescence.