



UK Office

Everest Biotech Ltd

Cherwell Innovation Centre
77 Heyford Park
Upper Heyford
Oxfordshire
OX25 5HD
UK

Enquiries:

info@everestbiotech.com

Sales:

sales@everestbiotech.com

Tech support:

support@everestbiotech.com

Tel: +44 (0)1869 238326

Fax: +44 (0)1869 238327

US Office

Everest Biotech c/o Abcore

405 Maple Street, Suite A106
Ramona,
CA 92065
USA

Inquiries:

info@everestbiotech.com

Sales:

usasales@everestbiotech.com

Tech support:

support@everestbiotech.com

Tel: 888-320-4628 (toll-free)

Fax: 888-841-9041

www.everestbiotech.com

**Research Use Only. Not for
diagnostic or therapeutic use.**

EB09858 - Goat Anti-Aconitase 2 (aa541-555) Antibody

Size: 100µg specific antibody in 200µl



Target Protein

Principal Names: aconitase 2, mitochondrial, ACONM, MGC20605, MGC33908, ACO2

Official Symbol: ACO2

Accession Number(s): NP_001089.1

Human GeneID(s): [50](#)

Non-Human GeneID(s): 11429 (mouse), 79250 (rat)

Immunogen

Peptide with sequence C-QDTYQHPPKDSSGQH, from the internal region of the protein sequence according to NP_001089.1.

Please note the [peptide](#) is available for sale.

Purification and Storage

Purified from goat serum by ammonium sulphate precipitation followed by antigen affinity chromatography using the immunizing peptide.

Supplied at 0.5 mg/ml in Tris saline, 0.02% sodium azide, pH7.3 with 0.5% bovine serum albumin.

Aliquot and store at -20°C. Minimize freezing and thawing.

Applications Tested

Peptide ELISA: antibody detection limit dilution 1:16000.

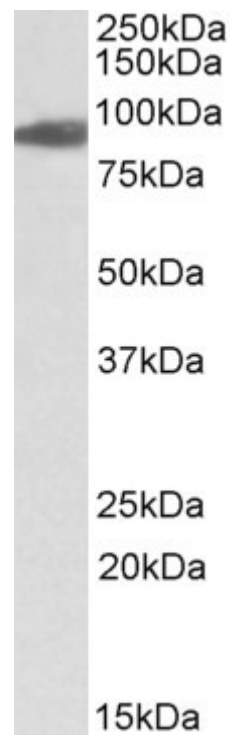
Western blot: Approx 90kDa band observed in Human Heart lysates, in Human, Mouse and Rat Adipose lysates and in Mouse, Rat and Pig Skeletal Muscle lysates (calculated MW of 85.4kDa according to NP_001089.1). Recommended concentration: 0.01-0.03µg/ml.

IHC: In paraffin embedded Human Breast shows mitochondrial staining in the epithelial cells of the ducts. Recommended concentration, 3-5µg/ml.

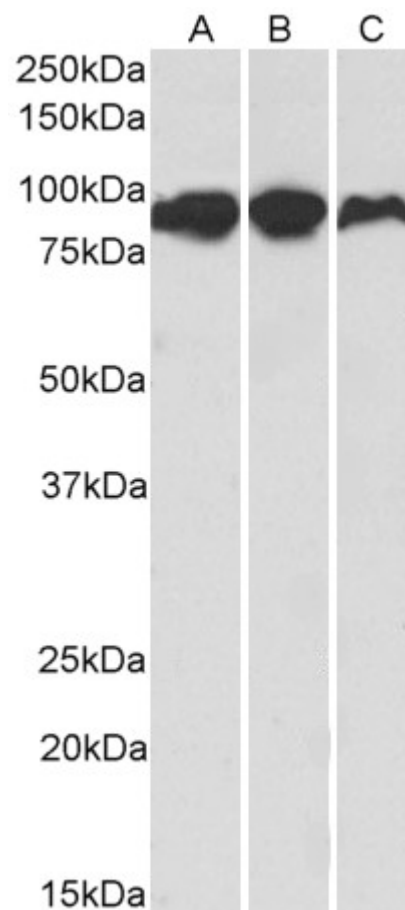
Species Reactivity

Tested: Human, Mouse, Rat, Pig

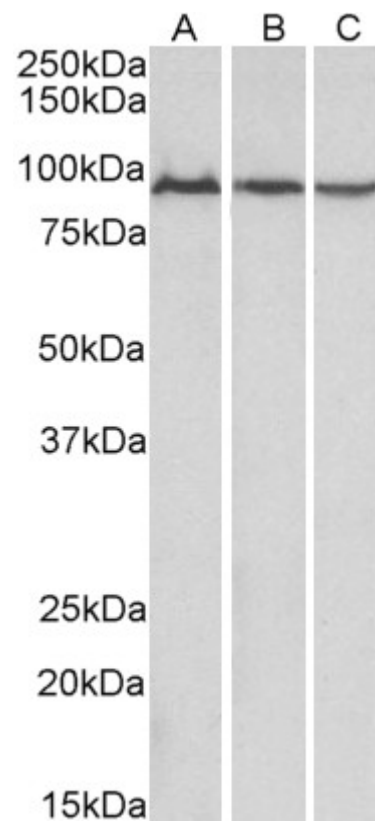
Expected from sequence similarity: Human, Mouse, Rat, Dog, Cow, Pig



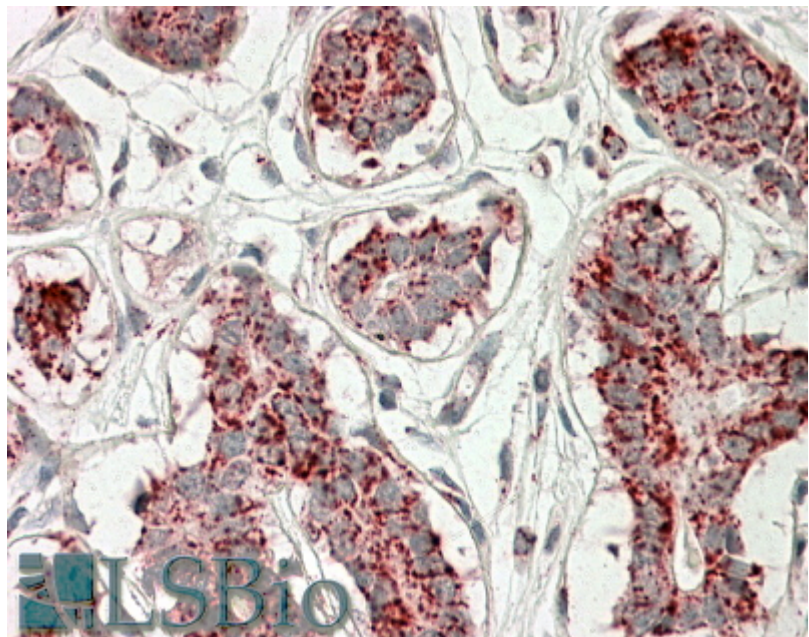
EB09858 (0.01 μ g/ml) staining of Human Heart lysate (35 μ g protein in RIPA buffer). Primary incubation was 1 hour. Detected by chemiluminescence.



EB09858 (0.1 μ g/ml) staining of Human (A), Mouse (B) and Rat (C) Adipose lysates (35 μ g protein in RIPA buffer). Primary incubation was 1 hour. Detected by chemiluminescence.



EB09858 (0.01 μ g/ml) staining of Mouse (A), Rat (B) and Pig (C) Skeletal Muscle lysates (35 μ g protein in RIPA buffer). Primary incubation was 1 hour. Detected by chemiluminescence.



EB09857 (3.8 μ g/ml) staining of paraffin embedded Human Breast. Steamed antigen retrieval with citrate buffer pH 6, AP-staining.