



## UK Office

### Everest Biotech Ltd

Cherwell Innovation Centre  
77 Heyford Park  
Upper Heyford  
Oxfordshire  
OX25 5HD  
UK

Enquiries:

[info@everestbiotech.com](mailto:info@everestbiotech.com)

Sales:

[sales@everestbiotech.com](mailto:sales@everestbiotech.com)

Tech support:

[support@everestbiotech.com](mailto:support@everestbiotech.com)

Tel: +44 (0)1869 238326

Fax: +44 (0)1869 238327

## US Office

### Everest Biotech c/o Abcore

405 Maple Street, Suite A106  
Ramona,  
CA 92065  
USA

Inquiries:

[info@everestbiotech.com](mailto:info@everestbiotech.com)

Sales:

[usasales@everestbiotech.com](mailto:usasales@everestbiotech.com)

Tech support:

[support@everestbiotech.com](mailto:support@everestbiotech.com)

Tel: 888-320-4628 (toll-free)

Fax: 888-841-9041

[www.everestbiotech.com](http://www.everestbiotech.com)

**Research Use Only. Not for  
diagnostic or therapeutic use.**

## EB09857 - Goat Anti-Aconitase 2 Antibody

Size: 100µg specific antibody in 200µl



### Target Protein

**Principal Names:** aconitase 2, mitochondrial, ACONM, MGC20605, MGC33908, ACO2, aconitase 2, citrate hydro-lyase, epididymis secretory sperm binding protein Li 284, HEL-S-284, ICRD, mitochondrial aconitase, OCA8

**Official Symbol:** ACO2

**Accession Number(s):** NP\_001089.1

**Human GeneID(s):** [50](#)

**Non-Human GeneID(s):** 11429 (mouse), 79250 (rat)

### Immunogen

Peptide with sequence C-QHVDVSPTSQRLQ, from the internal region of the protein sequence according to NP\_001089.1.

Please note the [peptide](#) is available for sale.

### Purification and Storage

Purified from goat serum by ammonium sulphate precipitation followed by antigen affinity chromatography using the immunizing peptide.

Supplied at 0.5 mg/ml in Tris saline, 0.02% sodium azide, pH7.3 with 0.5% bovine serum albumin.

Aliquot and store at -20°C. Minimize freezing and thawing.

### Applications Tested

**Peptide ELISA:** antibody detection limit dilution 1:32000.

**Western blot:** Approx 90kDa band observed in Human Heart lysates (calculated MW of 85.4kDa according to NP\_001089.1). Recommended concentration: 0.01-0.03µg/ml.

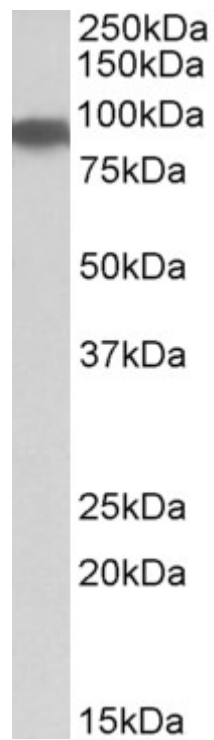
**IHC:** In paraffin embedded Human Breast shows mitochondrial staining in the epithelial cells of the ducts. Recommended concentration, 3-5µg/ml.

**Immunofluorescence:** Customer finds weak pixulate staining in the cytoplasm of HeLa cells.

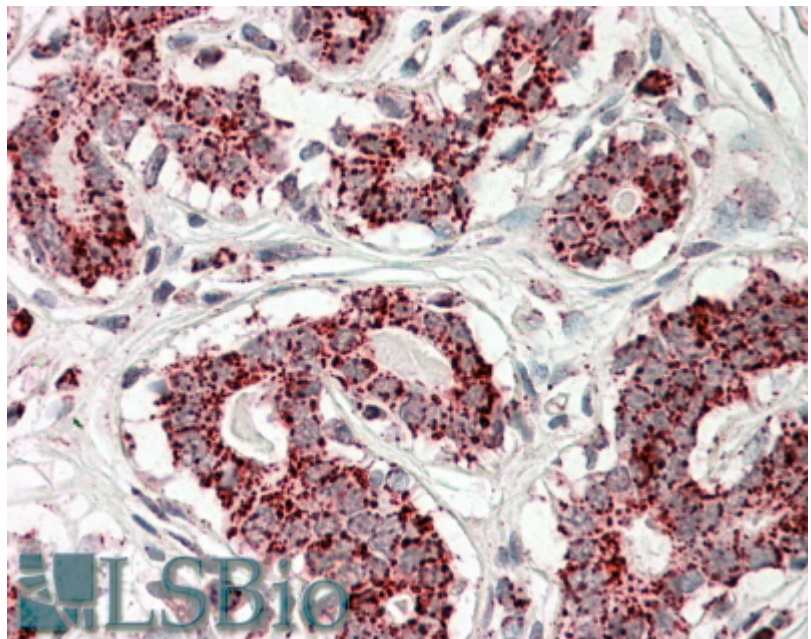
### Species Reactivity

**Tested:** Human

**Expected from sequence similarity:** Human, Mouse, Rat, Dog, Cow, Pig



EB09857 (0.01µg/ml) staining of Heart lysate (35µg protein in RIPA buffer). Primary incubation was 1 hour. Detected by chemiluminescence.



EB09857 (3.8µg/ml) staining of paraffin embedded Human Breast. Steamed antigen retrieval with citrate buffer pH 6, AP-staining.