



UK Office

Everest Biotech Ltd

Cherwell Innovation Centre
77 Heyford Park
Upper Heyford
Oxfordshire
OX25 5HD
UK

Enquiries:

info@everestbiotech.com

Sales:

sales@everestbiotech.com

Tech support:

support@everestbiotech.com

Tel: +44 (0)1869 238326

www.everestbiotech.com

**Research Use Only. Not for
diagnostic or therapeutic use.**

EB10915 - Goat Anti-ACPP / PAP (aa269-282) Antibody

Size: 100µg specific antibody in 200µl



Target Protein

Principal Names: ACPP, acid phosphatase, prostate, ACP-3, ACP3, PAP, OTTHUMP00000216107, prostatic acid phosphatase, prostatic acid phosphatase

Official Symbol: ACP3

Accession Number(s): NP_001127666.1; NP_001090.2

Human GeneID(s): [55](#)

Important Comments: This antibody is expected to recognize both reported isoforms (NP_001127666.1; NP_001090.2).

Immunogen

Peptide with sequence C-NHMKRATQIPSYKK, from the internal region of the protein sequence according to NP_001127666.1; NP_001090.2.

Please note the [peptide](#) is available for sale.

Purification and Storage

Purified from goat serum by ammonium sulphate precipitation followed by antigen affinity chromatography using the immunizing peptide.

Supplied at 0.5 mg/ml in Tris saline, 0.02% sodium azide, pH7.3 with 0.5% bovine serum albumin.

Aliquot and store at -20°C. Minimize freezing and thawing.

Applications Tested

Peptide ELISA: antibody detection limit dilution 1:32000.

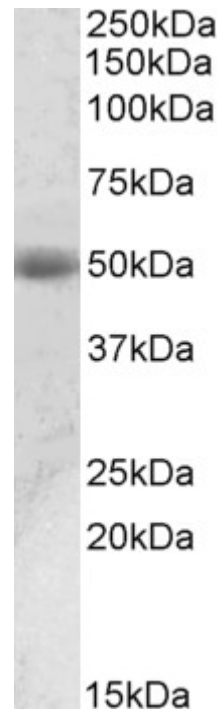
Western blot: Approx 50kDa band observed in Human Prostate lysates (calculated MW of 48.3kDa according to NP_001127666.1). Recommended concentration: 0.01-0.03µg/ml.

IHC: In paraffin embedded Human Prostate shows reticulate cytoplasm staining, more intense towards the lumen of the gland. Recommended concentration, 3-5µg/ml.

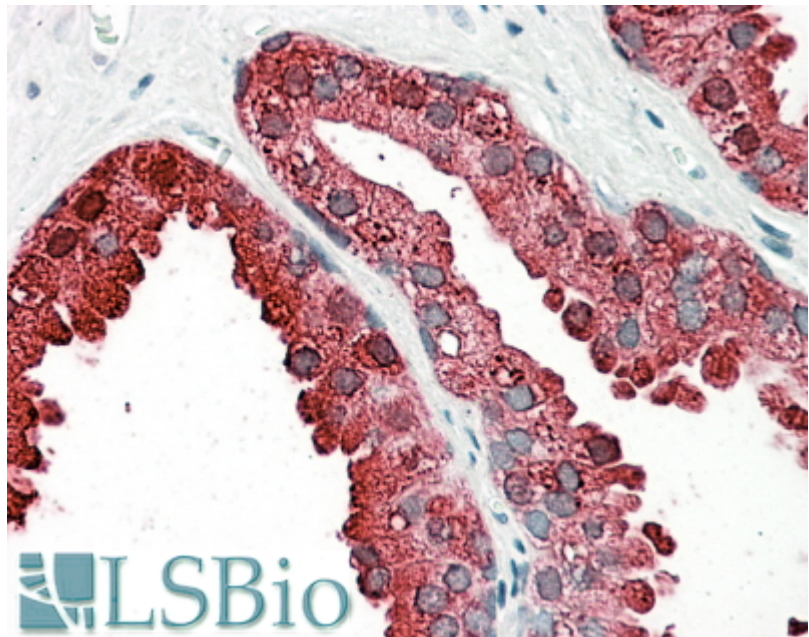
Species Reactivity

Tested: Human

Expected from sequence similarity: Human



EB10915 (0.01 μ g/ml) staining of Human Prostate lysate (35 μ g protein in RIPA buffer). Primary incubation was 1 hour. Detected by chemiluminescence.



EB10915 (3.8 μ g/ml) staining of paraffin embedded Human Prostate. Steamed antigen retrieval with citrate buffer pH 6, AP-staining.