



International Office

Everest Biotech Ltd

Vector Laboratories, Inc.
6737 Mowry Ave
Newark, CA 94560
United States

Customer Service:

customerservice@vectorlabs.com

Technical Service:

technical@vectorlabs.com

Tel: +1 (800) 227-6666

www.everestbiotech.com

**Research Use Only. Not for
diagnostic or therapeutic use.**

EB12585 - Goat Anti-Acrosin light chain Antibody

Size: 100µg specific antibody in 200µl



Target Protein

Principal Names: ACR, acrosin, acrosin light and heavy chain prepropeptide, preproacrosin, proacrosin

Official Symbol: ACR

Accession Number(s): NP_001088.2

Human GeneID(s): [49](#)

Immunogen

Peptide with sequence KDNATCDGPCGLR, from the internal region of the protein sequence according to NP_001088.2.

Please note the [peptide](#) is available for sale.

Purification and Storage

Purified from goat serum by ammonium sulphate precipitation followed by antigen affinity chromatography using the immunizing peptide.

Supplied at 0.5 mg/ml in Tris saline, 0.02% sodium azide, pH7.3 with 0.5% bovine serum albumin.

Aliquot and store at -20°C. Minimize freezing and thawing.

Applications Tested

Peptide ELISA: antibody detection limit dilution 1:2000.

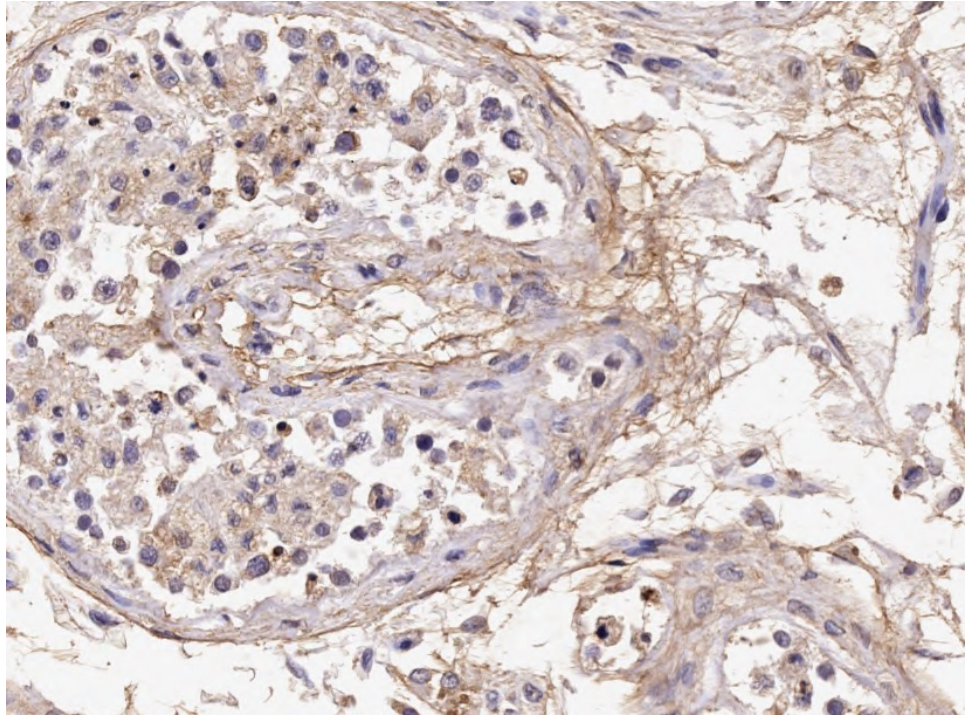
Western blot: Preliminary experiments in Human Testis lysates gave no specific signal but low background (at antibody concentration up to 2µg/ml).

IHC: Paraffin embedded Human Testis. Recommended concentration: 4µg/ml.

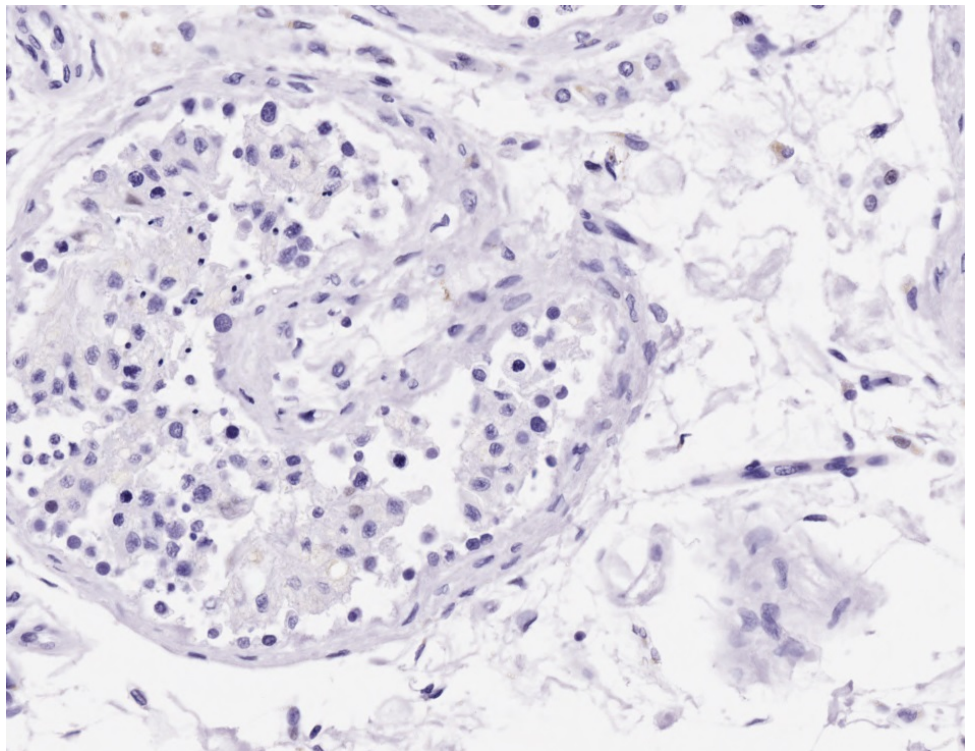
Species Reactivity

Tested: Human

Expected from sequence similarity: Human



EB12585 (4 μ g/ml) staining of paraffin embedded Human Testis. Microwaved antigen retrieval with citrate buffer pH 6, HRP-staining.



EB12585 Negative Control showing staining of paraffin embedded Human Cerebellum, with no primary antibody.