



UK Office

Everest Biotech Ltd

Cherwell Innovation Centre
77 Heyford Park
Upper Heyford
Oxfordshire
OX25 5HD
UK

Enquiries:

info@everestbiotech.com

Sales:

sales@everestbiotech.com

Tech support:

support@everestbiotech.com

Tel: +44 (0)1869 238326

Fax: +44 (0)1869 238327

US Office

Everest Biotech c/o Abcore

405 Maple Street, Suite A106
Ramona,
CA 92065
USA

Inquiries:

info@everestbiotech.com

Sales:

usasales@everestbiotech.com

Tech support:

support@everestbiotech.com

Tel: 888-320-4628 (toll-free)

Fax: 888-841-9041

www.everestbiotech.com

**Research Use Only. Not for
diagnostic or therapeutic use.**

EB07651 - Goat Anti-Actin-like 7B (mouse) Antibody

Size: 100µg specific antibody in 200µl



Target Protein

Principal Names: actin-like 7B, ACTL7B, MGC151192, MGC151194, Tact1, actin-like 7-beta, t-actin 1

Official Symbol: Actl7b

Accession Number(s): NP_079547.1

Non-Human GeneID(s): 11471 (mouse), 313183 (rat)

Important Comments: This antibody is not expected to cross-react with Actin-like 7A.

Immunogen

Peptide with sequence C-DELHVDYELPDGK, from the internal region of the protein sequence according to NP_079547.1.

Please note the [peptide](#) is available for sale.

Purification and Storage

Purified from goat serum by ammonium sulphate precipitation followed by antigen affinity chromatography using the immunizing peptide.

Supplied at 0.5 mg/ml in Tris saline, 0.02% sodium azide, pH7.3 with 0.5% bovine serum albumin.

Aliquot and store at -20°C. Minimize freezing and thawing.

Applications Tested

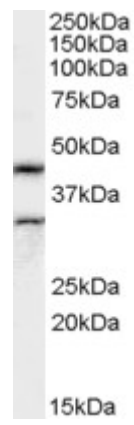
Peptide ELISA: antibody detection limit dilution 1:32000.

Western blot: Approx 45kDa band observed in Rat Testis lysates (calculated MW of 45.5kDa according to Rat NP_001020588.1 and 45.6kDa according to Mouse NP_079547.1). Recommended concentration: 0.5-1.5µg/ml. An additional band of unknown identity was also consistently observed at 30kDa. This band was successfully blocked by incubation with the immunising peptide. We would appreciate any feedback from people in the field - have any such results been reported with other antibodies/lysates? Have any further splice variants/modified forms been reported?

Species Reactivity

Tested: Rat

Expected from sequence similarity: Mouse, Rat



EB07651 (0.5µg/ml) staining of Rat Testes lysate (35µg protein in RIPA buffer). Primary incubation was 1 hour.
Detected by chemiluminescence.