



UK Office

Everest Biotech Ltd

Cherwell Innovation Centre
77 Heyford Park
Upper Heyford
Oxfordshire
OX25 5HD
UK

Enquiries:

info@everestbiotech.com

Sales:

sales@everestbiotech.com

Tech support:

support@everestbiotech.com

Tel: +44 (0)1869 238326

Fax: +44 (0)1869 238327

US Office

Everest Biotech c/o Abcore

405 Maple Street, Suite A106
Ramona,
CA 92065
USA

Inquiries:

info@everestbiotech.com

Sales:

usasales@everestbiotech.com

Tech support:

support@everestbiotech.com

Tel: 888-320-4628 (toll-free)

Fax: 888-841-9041

www.everestbiotech.com

**Research Use Only. Not for
diagnostic or therapeutic use.**

EB08207 - Goat Anti-ACVR1 Antibody

Size: 100µg specific antibody in 200µl



Target Protein

Principal Names: ACVR1, activin A receptor, type I, ACTRI, ACVRLK2, ALK2, FOP, SKR1, activin A receptor, type II-like kinase 2, activin A type I receptor, hydroxyalkyl-protein kinase

Official Symbol: ACVR1

Accession Number(s): NP_001096.1

Human GeneID(s): [90](#)

Non-Human GeneID(s): 11477 (mouse), 79558 (rat)

Important Comments: Reported variants represent identical protein: NP_001096.1, NP_001104537.1

Immunogen

Peptide with sequence C-RKFKRRNQERLNPRD, from the internal region of the protein sequence according to NP_001096.1.

Please note the [peptide](#) is available for sale.

Purification and Storage

Purified from goat serum by ammonium sulphate precipitation followed by antigen affinity chromatography using the immunizing peptide.

Supplied at 0.5 mg/ml in Tris saline, 0.02% sodium azide, pH7.3 with 0.5% bovine serum albumin.

Aliquot and store at -20°C. Minimize freezing and thawing.

Applications Tested

Peptide ELISA: antibody detection limit dilution 1:128000.

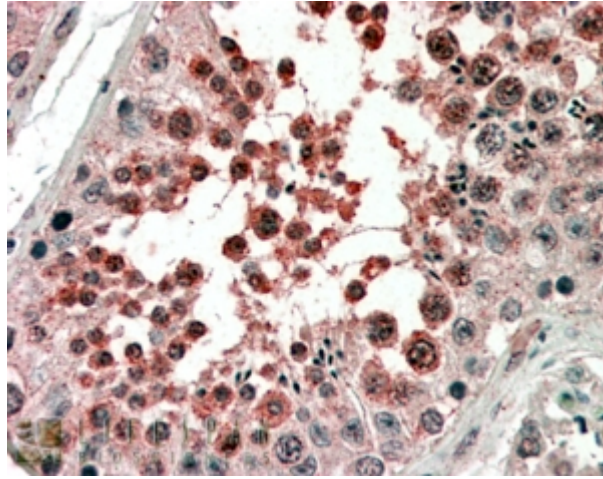
Western blot: Approx 60kDa band observed in Human Umbilical Cord lysates (calculated MW of 57.2kDa according to NP_001096.1). Recommended concentration: 0.3-1µg/ml.

IHC: In paraffin embedded Human Testis shows preferential staining of cytoplasm in primary spermatocytes.. Recommended concentration, 4-6µg/ml.

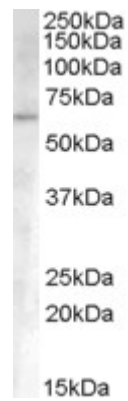
Species Reactivity

Tested: Human

Expected from sequence similarity: Human, Mouse, Rat, Dog



EB08207 (4µg/ml) staining of paraffin embedded Human Testis. Steamed antigen retrieval with citrate buffer pH 6, AP-staining.



EB08207 (0.3µg/ml) staining of Human Umbilical Cord lysate (35µg protein in RIPA buffer). Primary incubation was 1 hour. Detected by chemiluminescence.