

## UK Office

### Everest Biotech Ltd

Cherwell Innovation Centre  
77 Heyford Park  
Upper Heyford  
Oxfordshire  
OX25 5HD  
UK

Enquiries:

[info@everestbiotech.com](mailto:info@everestbiotech.com)

Sales:

[sales@everestbiotech.com](mailto:sales@everestbiotech.com)

Tech support:

[support@everestbiotech.com](mailto:support@everestbiotech.com)

Tel: +44 (0)1869 238326

[www.everestbiotech.com](http://www.everestbiotech.com)

**Research Use Only. Not for  
diagnostic or therapeutic use.**

## EB07583 - Goat Anti-ACYP1 (isoform a) Antibody

Size: 100µg specific antibody in 200µl



### Target Protein

**Principal Names:** ACYP1, acylphosphatase 1, erythrocyte (common) type, ACYPE, erythrocyte acylphosphatase 1

**Official Symbol:** ACYP1

**Accession Number(s):** NP\_001098.1

**Human GeneID(s):** [97](#)

**Non-Human GeneID(s):** 66204 (mouse)

**Important Comments:** This antibody is expected to recognize isoform a (NP\_001098.1) only.

### Immunogen

Peptide with sequence C-PKSHIDKANFNNEK, from the internal region of the protein sequence according to NP\_001098.1.

Please note the [peptide](#) is available for sale.

### Purification and Storage

Purified from goat serum by ammonium sulphate precipitation followed by antigen affinity chromatography using the immunizing peptide.

Supplied at 0.5 mg/ml in Tris saline, 0.02% sodium azide, pH7.3 with 0.5% bovine serum albumin.

Aliquot and store at -20°C. Minimize freezing and thawing.

### Applications Tested

**Peptide ELISA:** antibody detection limit dilution 1:128000.

**Western blot:** Approx 15kDa band observed in Human Testis lysates (calculated MW of 11.3kDa according to NP\_001098.1). Recommended concentration: 0.01-0.03µg/ml.

Primary incubation was 1 hour. Preliminary testing was unsuccessful on Mouse and Rat Testis for this particular batch.

**IHC:** Paraffin embedded Human Testis. Recommended concentration: 3.75µg/ml.

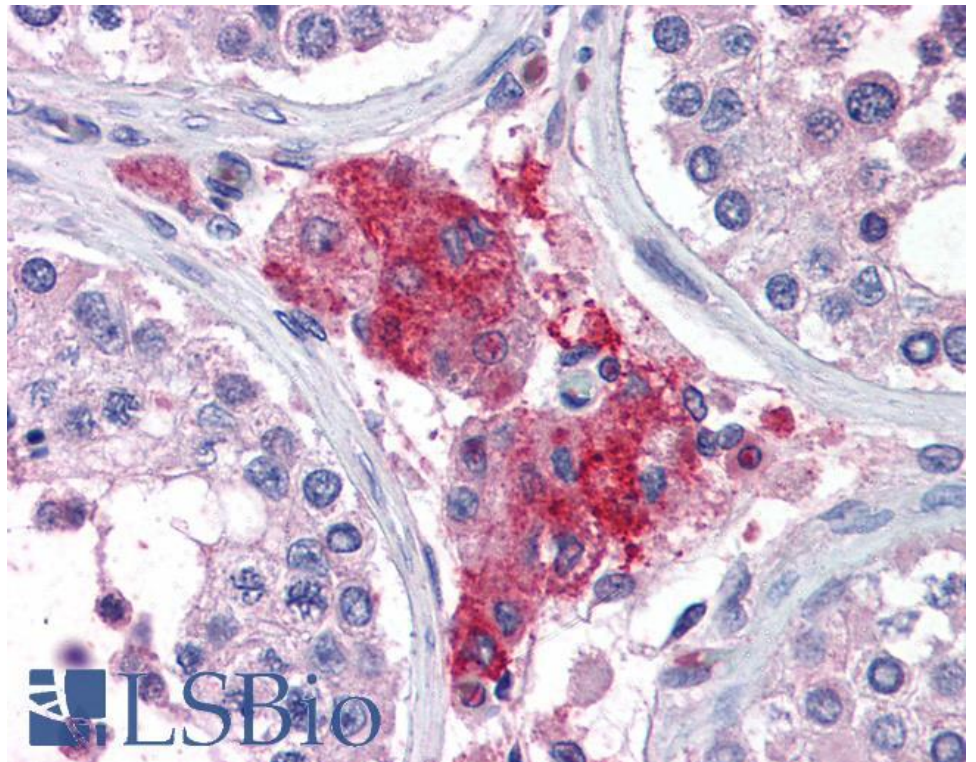
### Species Reactivity

**Tested:** Human

**Expected from sequence similarity:** Human, Mouse, Rat



EB07583 (0.01 $\mu$ g/ml) staining of Human Testis lysate (35 $\mu$ g protein in RIPA buffer). Detected by chemiluminescence.



EB07583 (3.75 $\mu$ g/ml) staining of paraffin embedded Human Testis. Steamed antigen retrieval with citrate buffer pH 6, AP-staining.