



UK Office

Everest Biotech Ltd

Cherwell Innovation Centre
77 Heyford Park
Upper Heyford
Oxfordshire
OX25 5HD
UK

Enquiries:

info@everestbiotech.com

Sales:

sales@everestbiotech.com

Tech support:

support@everestbiotech.com

Tel: +44 (0)1869 238326

Fax: +44 (0)1869 238327

US Office

Everest Biotech c/o Abcore

405 Maple Street, Suite A106
Ramona,
CA 92065
USA

Inquiries:

info@everestbiotech.com

Sales:

usasales@everestbiotech.com

Tech support:

support@everestbiotech.com

Tel: 888-320-4628 (toll-free)

Fax: 888-841-9041

www.everestbiotech.com

**Research Use Only. Not for
diagnostic or therapeutic use.**

EB07583 - Goat Anti-ACYP1 (isoform a) Antibody

Size: 100µg specific antibody in 200µl



Target Protein

Principal Names: ACYP1, acylphosphatase 1, erythrocyte (common) type, ACYPE, erythrocyte acylphosphatase 1

Official Symbol: ACYP1

Accession Number(s): NP_001098.1

Human GeneID(s): [97](#)

Non-Human GeneID(s): 66204 (mouse)

Important Comments: This antibody is expected to recognize isoform a (NP_001098.1) only.

Immunogen

Peptide with sequence C-PKSHIDKANFNNEK, from the internal region of the protein sequence according to NP_001098.1.

Please note the [peptide](#) is available for sale.

Purification and Storage

Purified from goat serum by ammonium sulphate precipitation followed by antigen affinity chromatography using the immunizing peptide.

Supplied at 0.5 mg/ml in Tris saline, 0.02% sodium azide, pH7.3 with 0.5% bovine serum albumin.

Aliquot and store at -20°C. Minimize freezing and thawing.

Applications Tested

Peptide ELISA: antibody detection limit dilution 1:128000.

Western blot: Approx 15kDa band observed in Human Testis lysates (calculated MW of 11.3kDa according to NP_001098.1). Recommended concentration: 0.01-0.03µg/ml.

Primary incubation was 1 hour. Preliminary testing was unsuccessful on Mouse and Rat Testis for this particular batch.

IHC: Paraffin embedded Human Testis. Recommended concentration: 3.75µg/ml.

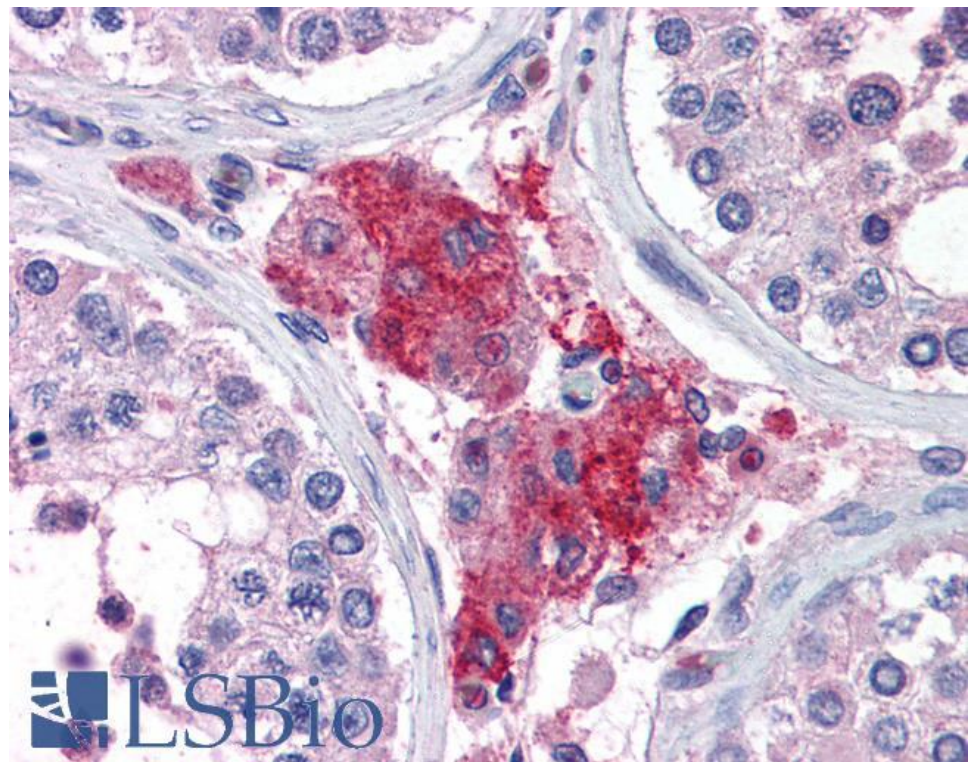
Species Reactivity

Tested: Human

Expected from sequence similarity: Human, Mouse, Rat



EB07583 (0.01 μ g/ml) staining of Human Testis lysate (35 μ g protein in RIPA buffer). Detected by chemiluminescence.



EB07583 (3.75 μ g/ml) staining of paraffin embedded Human Testis. Steamed antigen retrieval with citrate buffer pH 6, AP-staining.