



Everest Biotech Ltd
Cherwell Innovation Centre
77 Heyford Park
Upper Heyford
Oxfordshire
OX25 5HD, United Kingdom

everestbiotech.com

sales@everestbiotech.com

support@everestbiotech.com

Tel +44 1869 238326

Fax +44 1869 238327

Research Use Only. Not for diagnostic or therapeutic use.

Storage: For long-term storage keep aliquots at -20°C. (Store no longer than 12 months at 4°C). Minimize freezing and thawing.

EB06536 - Goat Anti-ADAM12 Antibody

Size: 100µg specific antibody in 200µl



Target Protein

Principal Names: ADAM metallopeptidase domain 12, RP11-295J3.5, ADAM metallopeptidase domain 12, A disintegrin and metalloproteinase domain 12 (Meltrin-alpha, mouse, homolog of), meltrin alpha, a disintegrin and metalloproteinase domain 12 (meltrin alpha), MCMPLtna, MLTNA, MLTN, MCMP, ADAM12

Official Symbol: ADAM12

Accession Number(s): NP_003465.3; NP_067673.2

Human GeneID(s): [8038](#)

Important Comments: This antibody is expected to recognise both the longer membrane-bound form of human ADAM12 (NP_003465.3) and the shorter soluble ADAM12 splice isoform (NP_067673.2). This antibody does not cross-react with other ADAMS.

Immunogen

Peptide with sequence AARPLPVSPARALC, from the N Terminus of the protein sequence according to NP_003465.3; NP_067673.2.

Please note the [peptide](#) is available for sale.

Purification and Storage

Purified from goat serum by ammonium sulphate precipitation followed by antigen affinity chromatography using the immunizing peptide.

Supplied at 0.5 mg/ml in Tris saline, 0.02% sodium azide, pH7.3 with 0.5% bovine serum albumin.

Aliquot and store at -20°C. Minimize freezing and thawing.

Applications Tested

Peptide ELISA: antibody detection limit dilution 1:64000.

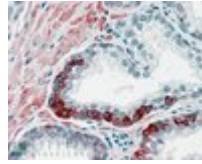
Western blot: Approx 90kDa band observed in human heart lysates (calculated MW of 99.6kDa according to NP_003465 and 80.5kDa according to NP_067673). Recommended concentration: 0.1-0.3µg/ml.

IHC: In paraffin embedded Human Prostate shows strong cytoplasm staining of a group of secretory epithelial cells. Recommended concentration, 3-5µg/ml.

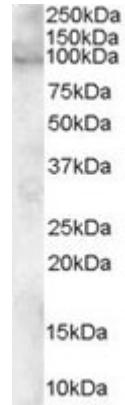
Species Reactivity

Tested: Human

Expected from sequence similarity: Human



EB06536 (3.8 μ g/ml) staining of paraffin embedded Human Prostate. Steamed antigen retrieval with citrate buffer pH 6, AP-staining.



EB06536 staining (0.1 μ g/ml) of human heart lysate (RIPA buffer, 30 μ g total protein per lane). Primary incubated for 1 hour. Detected by western blot using chemiluminescence.