

**Research Use Only. Not for diagnostic or therapeutic use.**

Storage: For long-term storage keep aliquots at -20°C. (Store no longer than 12 months at 4°C). Minimize freezing and thawing.

## EB06755 - Goat Anti-ADAM33 Antibody

Size: 100µg specific antibody in 200µl



### Target Protein

**Principal Names:** MGC149823, C20orf153, RP5-964F7.2, ADAM metalloproteinase domain 33, metalloprotease disintegrin, disintegrin and reprolysin metalloproteinase family protein, a disintegrin and metalloprotease 33, MGC71889, FLJ36751, FLJ35308, DKFZp434K0521, DJ964F7.1, HGNC:15478, a disintegrin and metalloproteinase domain 33, ADAM33

**Official Symbol:** ADAM33

**Accession Number(s):** NP\_079496.1

**Human GeneID(s):** [80332](https://www.ncbi.nlm.nih.gov/gene/80332)

**Important Comments:** This antibody is expected to recognise isoform alpha (NP\_079496.1) and not isoform beta (NP\_694882.1).

### Immunogen

Peptide with sequence CQSRRCRKNAFQEL, from the internal region of the protein sequence according to NP\_079496.1.

Please note the [peptide](#) is available for sale.

### Purification and Storage

Purified from goat serum by ammonium sulphate precipitation followed by antigen affinity chromatography using the immunizing peptide.

Supplied at 0.5 mg/ml in Tris saline, 0.02% sodium azide, pH7.3 with 0.5% bovine serum albumin.

Aliquot and store at -20°C. Minimize freezing and thawing.

### Applications Tested

**Peptide ELISA:** antibody detection limit dilution 1:64000.

**Western blot:** Experiments gave bands at approx 80-90kDa and strong ladder from 26 to 38kDa in Human Prostate lysates after 0.3µg/ml antibody staining. The observation of multiple bands and the 38 kDa band correspond to earlier findings in literature with different antibodies (Powell et al, Am J Respir Cell Mol Biol. 2004 Jul;31(1):13-21; PMID: 14742294). This protein has a calculated MW of 87.7kDa according to NP\_079496.1.

Recommended concentration: 0.1-0.3µg/ml.

### Species Reactivity

**Tested:** Human

**Expected from sequence similarity:** Human

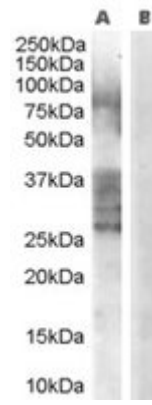
### Specific Reference

**The goat polyclonal antibody used in the following papers was manufactured by us:**  
Kim KE et.al.

Expression of ADAM33 is a novel regulatory mechanism in IL-18-secreted process in gastric cancer.

J Immunol. 2009 Mar 15;182(6):3548-55.

**PMID:** 19265133



EB06755 (0.3 $\mu$ g/ml) staining of Human Prostate lysate (35 $\mu$ g protein in RIPA buffer) with (B) and without (A) blocking with the immunising peptide. Primary incubation was 1 hour. Detected by chemiluminescence.