



## UK Office

### Everest Biotech Ltd

Cherwell Innovation Centre  
77 Heyford Park  
Upper Heyford  
Oxfordshire  
OX25 5HD  
UK

Enquiries:

[info@everestbiotech.com](mailto:info@everestbiotech.com)

Sales:

[sales@everestbiotech.com](mailto:sales@everestbiotech.com)

Tech support:

[support@everestbiotech.com](mailto:support@everestbiotech.com)

Tel: +44 (0)1869 238326

[www.everestbiotech.com](http://www.everestbiotech.com)

**Research Use Only. Not for  
diagnostic or therapeutic use.**

## EB11923 - Goat Anti-ADRA1A Antibody

Size: 100µg specific antibody in 200µl



### Target Protein

**Principal Names:** ADRA1A, adrenergic, alpha-1A-, receptor, ADRA1C, ADRA1L1, ALPHA1AAR, G protein coupled receptor, OTTHUMP00000125310, OTTHUMP00000125311, OTTHUMP00000125312, OTTHUMP00000125313, adrenergic, alpha-1A-, receptor variant 1, adrenergic, alpha-1A-, receptor variant 3, adrenergic, alpha-1A-, receptor variant 5, adrenergic, alpha-1A-, receptor variant 8, alpha-1A adrenergic receptor, alpha-1A adrenoceptor, alpha-1A adrenoreceptor, alpha-1C adrenergic receptor

**Official Symbol:** ADRA1A

**Accession Number(s):** NP\_000671.2

**Human GeneID(s):** [148](#)

**Important Comments:** This antibody is expected to recognize isoform 1 (NP\_000671.2) only.

### Immunogen

Peptide with sequence C-PSLDKNHQVPTIK, from the C Terminus of the protein sequence according to NP\_000671.2.

Please note the [peptide](#) is available for sale.

### Purification and Storage

Purified from goat serum by ammonium sulphate precipitation followed by antigen affinity chromatography using the immunizing peptide.

Supplied at 0.5 mg/ml in Tris saline, 0.02% sodium azide, pH7.3 with 0.5% bovine serum albumin.

Aliquot and store at -20°C. Minimize freezing and thawing.

### Applications Tested

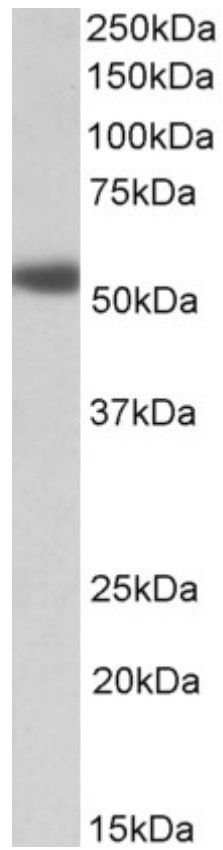
**Peptide ELISA:** antibody detection limit dilution 1:16000.

**Western blot:** Approx 55kDa band observed in Human Heart and Prostate lysates (calculated MW of 51.5kDa according to NP\_000671.2). Recommended concentration: 1-3µg/ml.

### Species Reactivity

**Tested:** Human

**Expected from sequence similarity:** Human



EB11923 (1 $\mu$ g/ml) staining of Human Prostate lysate (35 $\mu$ g protein in RIPA buffer). Primary incubation was 1 hour. Detected by chemiluminescence.