



Everest Biotech Ltd  
Cherwell Innovation Centre  
77 Heyford Park  
Upper Heyford  
Oxfordshire  
OX25 5HD, United Kingdom

[everestbiotech.com](http://everestbiotech.com)

[sales@everestbiotech.com](mailto:sales@everestbiotech.com)

[support@everestbiotech.com](mailto:support@everestbiotech.com)

Tel +44 1869 238326

Fax +44 1869 238327

**Research Use Only. Not for diagnostic or therapeutic use.**

Storage: For long-term storage keep aliquots at -20°C. (Store no longer than 12 months at 4°C). Minimize freezing and thawing.

## EB07133 - Goat Anti-ADRB1 Antibody

Size: 100µg specific antibody in 200µl



### Target Protein

**Principal Names:** beta-1-adrenergic receptor, RHR, BETA1AR, B1AR, ADRB1R, adrenergic, beta-1-, receptor, ADRB1

**Official Symbol:** ADRB1

**Accession Number(s):** NP\_000675.1

**Human GeneID(s):** [153](#)

### Immunogen

Peptide with sequence ESDEARRCYNDPK, from the internal region of the protein sequence according to NP\_000675.1.

Please note the [peptide](#) is available for sale.

### Purification and Storage

Purified from goat serum by ammonium sulphate precipitation followed by antigen affinity chromatography using the immunizing peptide.

Supplied at 0.5 mg/ml in Tris saline, 0.02% sodium azide, pH7.3 with 0.5% bovine serum albumin.

Aliquot and store at -20°C. Minimize freezing and thawing.

### Applications Tested

**Peptide ELISA:** antibody detection limit dilution 1:64000.

**Western blot:** Approx 55kDa band observed in Human Heart lysates (calculated MW of 51.2kDa according to NP\_000675.1). Recommended concentration: 0.3-1µg/ml.

**Other applications:** This product has been successfully used in assay standardization (beating frequency) of rat cardiomyocytes (PubMed: Walkut G. Et al., Am Coll Cardiol. 2010 Feb 2;55(5):463-8.; PMID: 20117461). Recommended concentration: 5µg/ml.

### Species Reactivity

**Tested:** Human, Rat

**Expected from sequence similarity:** Human, Mouse, Rat, Dog

### Specific Reference

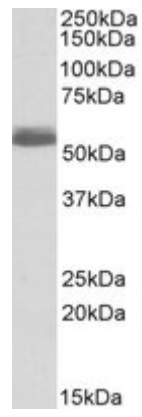
This antibody has been successfully used in the following papers:

Wallukat G, Muñoz Saravia SG, Haberland A, Bartel S, Araujo R, Valda G, Duchon D, Diaz Ramirez I, Borges AC, Schimke I.

Distinct patterns of autoantibodies against G-protein-coupled receptors in Chagas' cardiomyopathy and megacolon. Their potential impact for early risk assessment in asymptomatic Chagas' patients.

J Am Coll Cardiol. 2010 Feb 2;55(5):463-8.

**PMID:** 0



EB07133 (0.5 $\mu$ g/ml) staining of human heart lysate (35 $\mu$ g protein in RIPA buffer). Primary incubation was 1 hour.  
Detected by chemiluminescence.