



## UK Office

### Everest Biotech Ltd

Cherwell Innovation Centre  
77 Heyford Park  
Upper Heyford  
Oxfordshire  
OX25 5HD  
UK

Enquiries:

[info@everestbiotech.com](mailto:info@everestbiotech.com)

Sales:

[sales@everestbiotech.com](mailto:sales@everestbiotech.com)

Tech support:

[support@everestbiotech.com](mailto:support@everestbiotech.com)

Tel: +44 (0)1869 238326

Fax: +44 (0)1869 238327

## US Office

### Everest Biotech c/o Abcore

405 Maple Street, Suite A106  
Ramona,  
CA 92065  
USA

Inquiries:

[info@everestbiotech.com](mailto:info@everestbiotech.com)

Sales:

[usasales@everestbiotech.com](mailto:usasales@everestbiotech.com)

Tech support:

[support@everestbiotech.com](mailto:support@everestbiotech.com)

Tel: 888-320-4628 (toll-free)

Fax: 888-841-9041

[www.everestbiotech.com](http://www.everestbiotech.com)

**Research Use Only. Not for  
diagnostic or therapeutic use.**

## EB06937 - Goat Anti-ADRB2R / ADRB2 Antibody

Size: 100µg specific antibody in 200µl



### Target Protein

**Principal Names:** ADRB2, ADRB2R, adrenergic, beta-2-, receptor, surface [Homo sapiens], HGNC:286, ADRBR, B2AR, BAR, BETA2AR, beta-2 adrenergic receptor, beta-2 adrenoceptor, catecholamine receptor

**Official Symbol:** ADRB2

**Accession Number(s):** NP\_000015.1

**Human GeneID(s):** [154](#)

### Immunogen

Peptide with sequence C-HQGTVPDNDISQ, from the C Terminus of the protein sequence according to NP\_000015.1.

Please note the [peptide](#) is available for sale.

### Purification and Storage

Purified from goat serum by ammonium sulphate precipitation followed by antigen affinity chromatography using the immunizing peptide.

Supplied at 0.5 mg/ml in Tris saline, 0.02% sodium azide, pH7.3 with 0.5% bovine serum albumin.

Aliquot and store at -20°C. Minimize freezing and thawing.

### Applications Tested

**Peptide ELISA:** antibody detection limit dilution 1:16000.

**Western blot:** Approx 48kDa band observed in lysates of cell line HepG2 (calculated MW of 46.6kDa according to NP\_000015.1). Recommended concentration: 0.3-1µg/ml. Primary incubation 1 hour at room temperature.

### Species Reactivity

**Tested:** Human

**Expected from sequence similarity:** Human, Dog, Cow

### Specific Reference

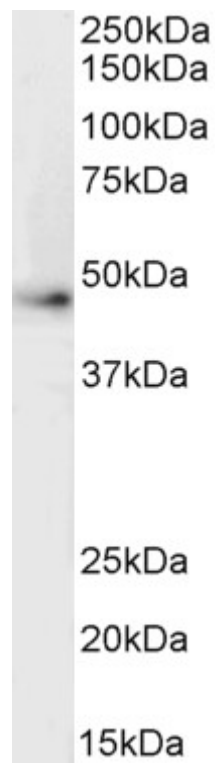
**This antibody (previous batch) has been successfully used in Western blot on Cow:**

Rekawiecki R, Nowocin A, Kotwica J.

Relationship between concentrations of progesterone, oxytocin, noradrenaline, gene expression and protein level for their receptors in corpus luteum during estrous cycle in the cow.

Prostaglandins Other Lipid Mediat. 2010 Jun;92(1-4):13-8.

PMID: 20149890



EB06937 (0.5 $\mu$ g/ml) staining of HepG2 cell ysate (35 $\mu$ g protein in RIPA buffer). Detected by chemiluminescence.