



## UK Office

### Everest Biotech Ltd

Cherwell Innovation Centre  
77 Heyford Park  
Upper Heyford  
Oxfordshire  
OX25 5HD  
UK

Enquiries:

[info@everestbiotech.com](mailto:info@everestbiotech.com)

Sales:

[sales@everestbiotech.com](mailto:sales@everestbiotech.com)

Tech support:

[support@everestbiotech.com](mailto:support@everestbiotech.com)

Tel: +44 (0)1869 238326

Fax: +44 (0)1869 238327

## US Office

### Everest Biotech c/o Abcore

405 Maple Street, Suite A106  
Ramona,  
CA 92065  
USA

Inquiries:

[info@everestbiotech.com](mailto:info@everestbiotech.com)

Sales:

[usasales@everestbiotech.com](mailto:usasales@everestbiotech.com)

Tech support:

[support@everestbiotech.com](mailto:support@everestbiotech.com)

Tel: 888-320-4628 (toll-free)

Fax: 888-841-9041

[www.everestbiotech.com](http://www.everestbiotech.com)

**Research Use Only. Not for  
diagnostic or therapeutic use.**

## EB09538 - Goat Anti-Afamin / alpha Albumin Antibody

Size: 100µg specific antibody in 200µl



### Target Protein

**Principal Names:** AFM, afamin, ALB2, ALBA, ALF, MGC125338, MGC125339,  
alpha-albumin

**Official Symbol:** AFM

**Accession Number(s):** NP\_001124.1

**Human GeneID(s):** [173](#)

**Non-Human GeneID(s):** 75547 (mouse), 293024 (rat)

### Immunogen

Peptide with sequence C-NKDDRPKDLSLRE, from the internal region of the protein  
sequence according to NP\_001124.1.

Please note the [peptide](#) is available for sale.

### Purification and Storage

Purified from goat serum by ammonium sulphate precipitation followed by antigen affinity  
chromatography using the immunizing peptide.

Supplied at 0.5 mg/ml in Tris saline, 0.02% sodium azide, pH7.3 with 0.5% bovine serum  
albumin.

Aliquot and store at -20°C. Minimize freezing and thawing.

### Applications Tested

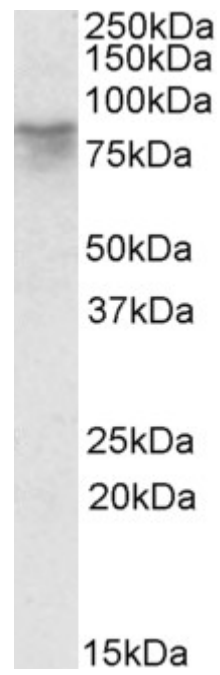
**Peptide ELISA:** antibody detection limit dilution 1:16000.

**Western blot:** Approx 80kDa band observed in Human Brain (Cerebellum and Cerebral  
Cortex) lysates (calculated MW of 69.1kDa according to NP\_001124.1). Recommended  
concentration: 0.3-1µg/ml.

### Species Reactivity

**Tested:** Human

**Expected from sequence similarity:** Human, Mouse, Rat, Dog, Cow



EB09538 (0.3 $\mu$ g/ml) staining of Human Cerebellum lysate (35 $\mu$ g protein in RIPA buffer). Primary incubation was 1 hour. Detected by chemiluminescence.