



## UK Office

### Everest Biotech Ltd

Cherwell Innovation Centre  
77 Heyford Park  
Upper Heyford  
Oxfordshire  
OX25 5HD  
UK

Enquiries:

[info@everestbiotech.com](mailto:info@everestbiotech.com)

Sales:

[sales@everestbiotech.com](mailto:sales@everestbiotech.com)

Tech support:

[support@everestbiotech.com](mailto:support@everestbiotech.com)

Tel: +44 (0)1869 238326

Fax: +44 (0)1869 238327

## US Office

### Everest Biotech c/o Abcore

405 Maple Street, Suite A106  
Ramona,  
CA 92065  
USA

Inquiries:

[info@everestbiotech.com](mailto:info@everestbiotech.com)

Sales:

[usasales@everestbiotech.com](mailto:usasales@everestbiotech.com)

Tech support:

[support@everestbiotech.com](mailto:support@everestbiotech.com)

Tel: 888-320-4628 (toll-free)

Fax: 888-841-9041

[www.everestbiotech.com](http://www.everestbiotech.com)

**Research Use Only. Not for  
diagnostic or therapeutic use.**

## EB07446 - Goat Anti-AGTR1 / AT1 Antibody

Size: 100µg specific antibody in 200µl



### Target Protein

**Principal Names:** AGTR1, AT1, angiotensin II receptor, type 1, AG2S, AGTR1A, AGTR1B, AT1B, AT2R1, AT2R1A, AT2R1B, HAT1R, angiotensin receptor 1, angiotensin receptor 1B, type-1B angiotensin II receptor

**Official Symbol:** AGTR1

**Accession Number(s):** NP\_000676.1; NP\_004826.2; NP\_033611.1; NP\_114038.1; NP\_114438.1

**Human GeneID(s):** [185](#)

**Non-Human GeneID(s):** 11607 (mouse), 24180 (rat)

**Important Comments:** All reported variants represent identical protein (NP\_000676.1, NP\_004826.2, NP\_033611.1, NP\_114038.1 and NP\_114438.1).

### Immunogen

Peptide with sequence C-EIQKNKPRNDDIFK, from the internal region of the protein sequence according to NP\_000676.1; NP\_004826.2; NP\_033611.1; NP\_114038.1; NP\_114438.1.

Please note the [peptide](#) is available for sale.

### Purification and Storage

Purified from goat serum by ammonium sulphate precipitation followed by antigen affinity chromatography using the immunizing peptide.

Supplied at 0.5 mg/ml in Tris saline, 0.02% sodium azide, pH7.3 with 0.5% bovine serum albumin.

Aliquot and store at -20°C. Minimize freezing and thawing.

### Applications Tested

**Peptide ELISA:** antibody detection limit dilution 1:32000.

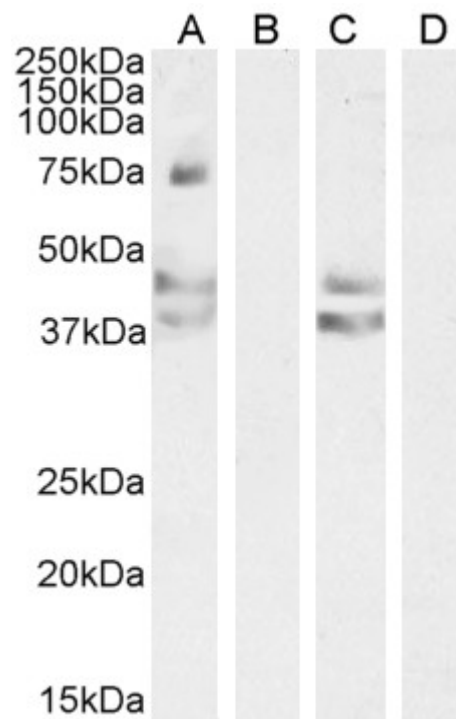
**Western blot:** Approx 38kDa band observed in Human and Mouse Liver lysates (calculated MW of 41.1kDa according to Human NP\_000676.1 and 40.9kDa according to Mouse NP\_796296.1) Additional bands of unknown identity were also observed at 45 and 75kDa and were successfully blocked by incubation with the immunizing peptide.

Recommended concentration: 0.1-0.3µg/ml. Primary incubation 1 hour at room temperature. Preliminary testing was unsuccessful on Rat Liver for this particular batch.

### Species Reactivity

**Tested:** Human, Mouse

**Expected from sequence similarity:** Human, Mouse



EB07446 (0.2 $\mu$ g/ml) staining of Human Liver (A) + peptide (B), Mouse Liver (C) + peptide (D) lysate (35 $\mu$ g protein in RIPA buffer). Detected by chemiluminescence.