



UK Office

Everest Biotech Ltd

Cherwell Innovation Centre
77 Heyford Park
Upper Heyford
Oxfordshire
OX25 5HD
UK

Enquiries:

info@everestbiotech.com

Sales:

sales@everestbiotech.com

Tech support:

support@everestbiotech.com

Tel: +44 (0)1869 238326

Fax: +44 (0)1869 238327

US Office

Everest Biotech c/o Abcore

405 Maple Street, Suite A106
Ramona,
CA 92065
USA

Inquiries:

info@everestbiotech.com

Sales:

usasales@everestbiotech.com

Tech support:

support@everestbiotech.com

Tel: 888-320-4628 (toll-free)

Fax: 888-841-9041

www.everestbiotech.com

**Research Use Only. Not for
diagnostic or therapeutic use.**

EB05419-B - Goat Anti-AIF1 / IBA1 (isoform 1 and 3), biotinylated Antibody

Size: 100µg specific antibody in 200µl



Target Protein

Principal Names: AIF1, allograft inflammatory factor 1, AIF-1, IBA1, IRT-1, IRT1, allograft inflammatory factor-1 splice variant Hara-1, interferon gamma responsive transcript, ionized calcium-binding adapter molecule 1, protein G1, DADB-70P7.8, Daintain

Official Symbol: AIF1

Accession Number(s): NP_116573.1; NP_004838.1; NP_001614.3

Human GeneID(s): [199](#)

Non-Human GeneID(s): 11629 (mouse), 29427 (rat)

Important Comments: This antibody is expected to recognize isoform 1 (NP_116573.1) and isoform 3 (NP_001614.3).

Immunogen

Peptide with sequence C-TGPPAKKAISELP., from the C Terminus of the protein sequence according to NP_116573.1; NP_004838.1; NP_001614.3.

Please note the [peptide](#) is available for sale.

Purification and Storage

Purified from goat serum by ammonium sulphate precipitation followed by antigen affinity chromatography using the immunizing peptide.

Supplied at 0.5 mg/ml in Tris saline, 0.02% sodium azide, pH7.3 with 0.5% bovine serum albumin.

Aliquot and store at -20°C. Minimize freezing and thawing.

Applications Tested

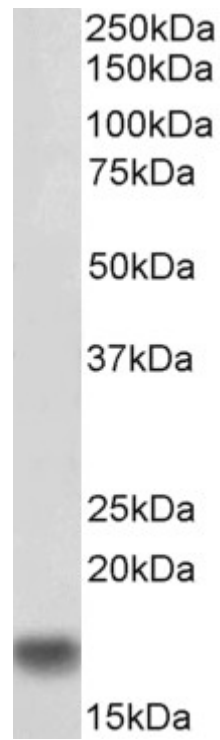
Peptide ELISA: antibody detection limit dilution 1:128000.

Western blot: Approx 17kDa band observed in Rat Brain lysates (calculated MW of 16.7kDa according to NP_001614.3). See non-biotinylated parental product's datasheet for further QC data. Recommended concentration: 0.1-0.3µg/ml.

Species Reactivity

Tested: Human, Rat

Expected from sequence similarity: Human, Mouse, Rat, Pig



Biotinylated EB05419 (0.1µg/ml) staining of Rat Brain lysate (35µg protein in RIPA buffer). Primary incubation was 1 hour. Detected by chemiluminescence, using streptavidin-HRP and using NAP blocker as a substitute for skimmed milk.