



Everest Biotech Ltd  
Cherwell Innovation Centre  
77 Heyford Park  
Upper Heyford  
Oxfordshire  
OX25 5HD, United Kingdom

[everestbiotech.com](http://everestbiotech.com)

[sales@everestbiotech.com](mailto:sales@everestbiotech.com)

[support@everestbiotech.com](mailto:support@everestbiotech.com)

Tel +44 1869 238326

Fax +44 1869 238327

**Research Use Only. Not for diagnostic or therapeutic use.**

Storage: For long-term storage keep aliquots at -20°C. (Store no longer than 12 months at 4°C). Minimize freezing and thawing.

## EB07174 - Goat Anti-AIF1 / IBA1 (isoform 3) Antibody

Size: 100µg specific antibody in 200µl



### Target Protein

**Principal Names:** ionized calcium-binding adapter molecule, interferon gamma responsive transcript, Em:AF129756.17, IRT-1, AIF-1, DASS-82G15.2, allograft inflammatory factor 1, IBA1, AIF1

**Official Symbol:** AIF1

**Accession Number(s):** NP\_001614.3

**Human GeneID(s):** [199](#)

**Non-Human GeneID(s):** 11629 (mouse)

**Important Comments:** This antibody is expected to recognise isoform 3 (NP\_001614.3) only.

### Immunogen

Peptide with sequence C-NKQFLDDPKYSSDED, from the internal region of the protein sequence according to NP\_001614.3.

Please note the [peptide](#) is available for sale.

### Purification and Storage

Purified from goat serum by ammonium sulphate precipitation followed by antigen affinity chromatography using the immunizing peptide.

Supplied at 0.5 mg/ml in Tris saline, 0.02% sodium azide, pH7.3 with 0.5% bovine serum albumin.

Aliquot and store at -20°C. Minimize freezing and thawing.

### Applications Tested

**Peptide ELISA:** antibody detection limit dilution 1:32000.

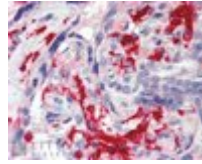
**Western blot:** Approx 17kDa band observed in Human Peripheral Blood Mononucleocyte lysates (calculated MW of 16.7kDa according to NP\_001614.3). Recommended concentration: 1-3µg/ml. Additional bands of unknown identity were also consistently observed at 35kDa and 110kDa. These bands were successfully blocked by incubation with the immunising peptide. We would appreciate any feedback from people in the field - have any results been reported with other antibodies/lysates? Have any further splice variants/modified forms been reported?

**IHC:** In paraffin embedded Human Placenta shows strong staining of extracellular material (with both EB07174 and EB07257). Recommended concentration, 2-3µg/ml.

### Species Reactivity

**Tested:** Human

**Expected from sequence similarity:** Human, Mouse, Rat, Dog



EB07174 (2.5µg/ml) staining of paraffin embedded Human Placenta. Steamed antigen retrieval with citrate buffer pH 6, AP-staining.



EB07174 (1µg/ml) staining of Human Peripheral Blood Mononucleocyte lysate (35µg protein in RIPA buffer) with (B) and without (A) blocking with the immunising peptide. Primary incubation was 1 hour. Detected by chemiluminescence.