



## UK Office

### Everest Biotech Ltd

Cherwell Innovation Centre  
77 Heyford Park  
Upper Heyford  
Oxfordshire  
OX25 5HD  
UK

Enquiries:

[info@everestbiotech.com](mailto:info@everestbiotech.com)

Sales:

[sales@everestbiotech.com](mailto:sales@everestbiotech.com)

Tech support:

[support@everestbiotech.com](mailto:support@everestbiotech.com)

Tel: +44 (0)1869 238326

Fax: +44 (0)1869 238327

## US Office

### Everest Biotech c/o Abcore

405 Maple Street, Suite A106  
Ramona,  
CA 92065  
USA

Inquiries:

[info@everestbiotech.com](mailto:info@everestbiotech.com)

Sales:

[usasales@everestbiotech.com](mailto:usasales@everestbiotech.com)

Tech support:

[support@everestbiotech.com](mailto:support@everestbiotech.com)

Tel: 888-320-4628 (toll-free)

Fax: 888-841-9041

[www.everestbiotech.com](http://www.everestbiotech.com)

**Research Use Only. Not for  
diagnostic or therapeutic use.**

## EB12622 - Goat Anti-AIFM1 Antibody

Size: 100µg specific antibody in 200µl



### Target Protein

**Principal Names:** AIFM1, apoptosis-inducing factor, mitochondrion-associated, 1, AIF, CMTX4, COWCK, COXPD6, PDCD8, apoptosis-inducing factor 1, mitochondrial, programmed cell death 8 (apoptosis-inducing factor), striatal apoptosis-inducing factor

**Official Symbol:** AIFM1

**Accession Number(s):** NP\_004199.1; NP\_665811.1; NP\_665812.1; NP\_001124318.1

**Human GeneID(s):** [9131](#)

**Non-Human GeneID(s):** 26926 (mouse), 83533 (rat)

**Important Comments:** This antibody is expected to recognize isoform 1 (NP\_004199.1), isoform 2 (NP\_665811.1), isoform 3 (NP\_665812.1) and isoform 4 (NP\_001124318.1).

### Immunogen

Peptide with sequence C-NEVAKLFNIHED, from the C Terminus of the protein sequence according to NP\_004199.1; NP\_665811.1; NP\_665812.1; NP\_001124318.1.

Please note the [peptide](#) is available for sale.

### Purification and Storage

Purified from goat serum by ammonium sulphate precipitation followed by antigen affinity chromatography using the immunizing peptide.

Supplied at 0.5 mg/ml in Tris saline, 0.02% sodium azide, pH7.3 with 0.5% bovine serum albumin.

Aliquot and store at -20°C. Minimize freezing and thawing.

### Applications Tested

**Peptide ELISA:** antibody detection limit dilution 1:128000.

**Western blot:** Approx 70kDa band observed in lysates of cell line Jurkat and NIH3T3, and in Mouse and Rat Heart and Kidney lysates. Approx. 65kDa observed in Pig Heart lysates (calculated MW of 66.9kDa according to Human NP\_004199.1 and 66.8kDa according to Mouse NP\_036149.1, Rat NP\_112646.1 and Pig NP\_001284561.1).

Recommended concentration: 0.01-0.1µg/ml. Primary incubation 1 hour at room temperature.

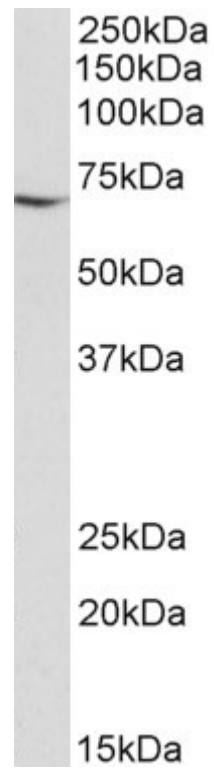
**IHC:** Paraffin embedded Human Liver. Recommended concentration: 5µg/ml.

**Immunofluorescence:** Strong expression of the protein seen in the Mitochondria of HeLa and U2OS cells. Recommended concentration: 10µg/ml.

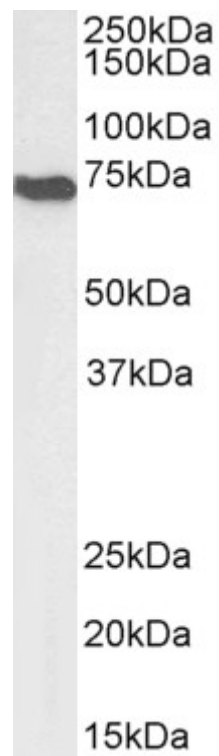
### Species Reactivity

**Tested:** Human, Mouse, Rat, Pig

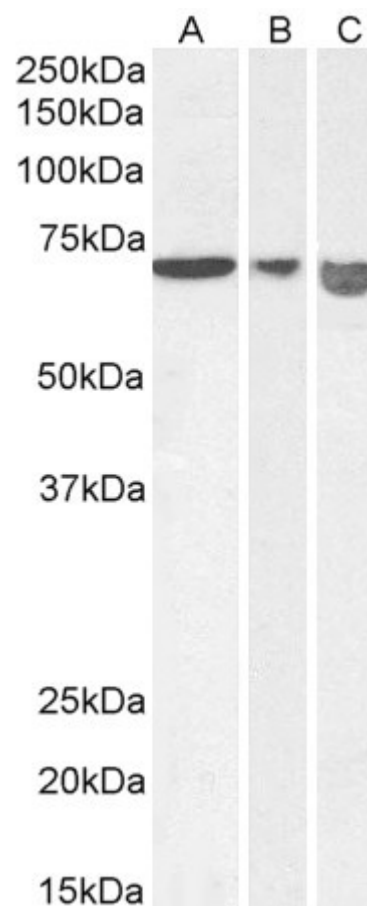
**Expected from sequence similarity:** Human, Mouse, Rat, Dog, Pig, Cow



EB12622 (0.01 µg/ml) staining of Jurkat lysate (35 µg protein in RIPA buffer). Detected by chemiluminescence.



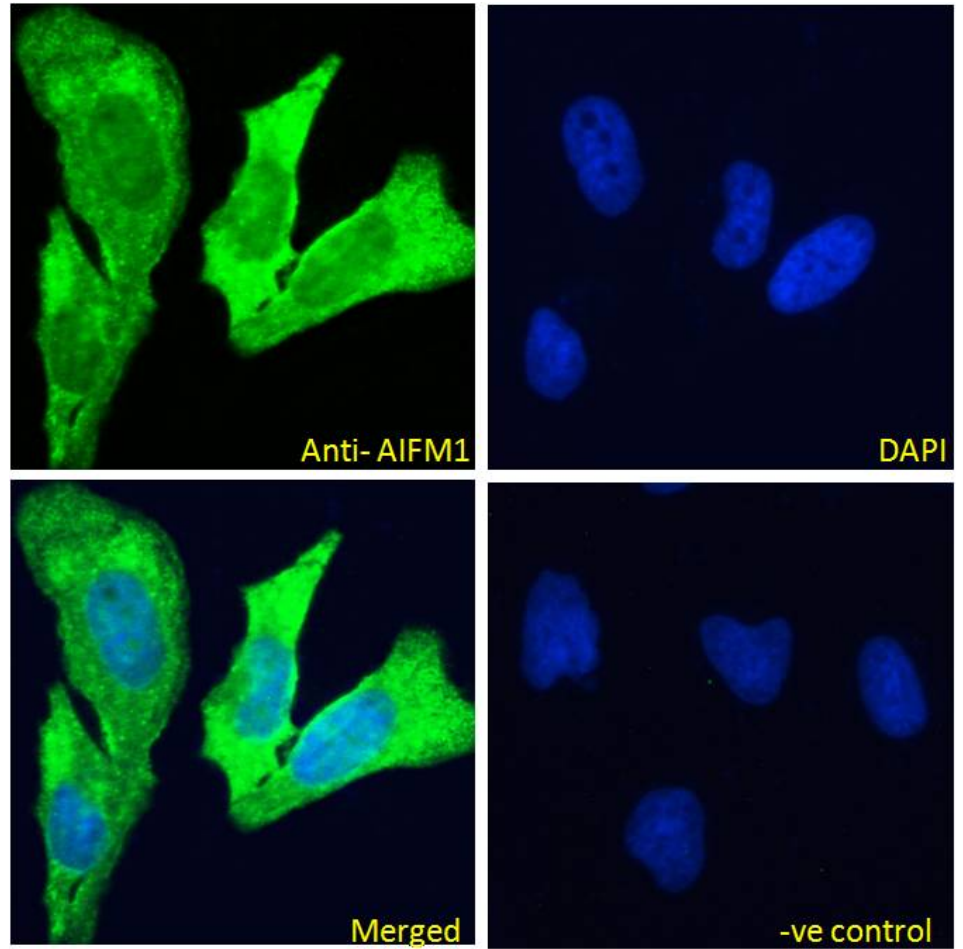
EB12622 (0.1 µg/ml) staining of NIH3T3 lysate (35 µg protein in RIPA buffer) Detected by chemiluminescence.



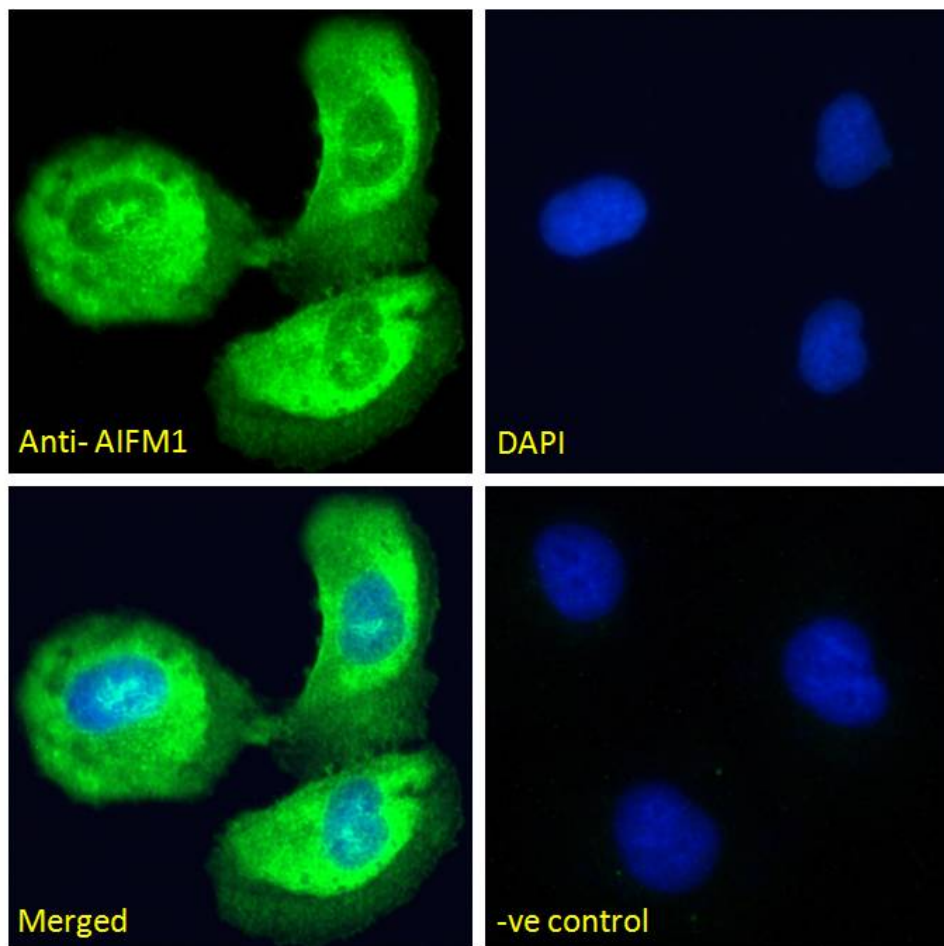
EB12622 (0.01µg/ml) staining of Mouse (A), Rat (B) and Pig (C) Heart lysate (35µg protein in RIPA buffer).  
Detected by chemiluminescence.



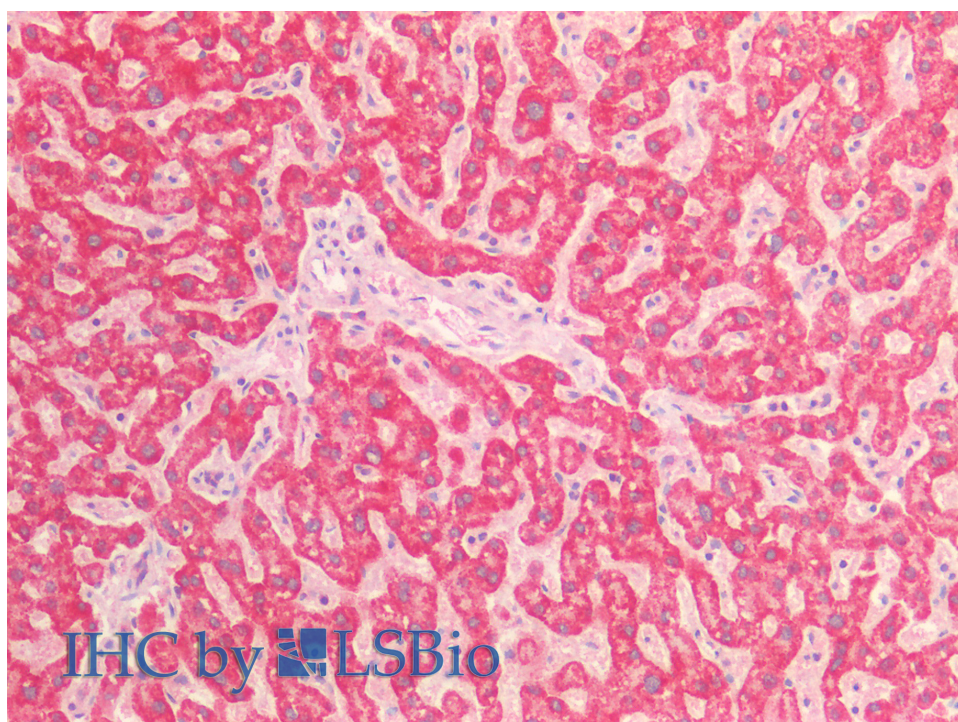
EB12622 (0.03µg/ml) staining of Mouse (A) and Rat (B) Kidney lysate (35µg protein in RIPA buffer). Detected by chemiluminescence



EB12622-P1 Immunofluorescence analysis of paraformaldehyde fixed HeLa cells, permeabilized with 0.15% Triton. Primary incubation 1hr (10ug/ml) followed by Alexa Fluor 488 secondary antibody (4ug/ml), showing Mitochondrial staining. The nuclear stain is DAPI (blue). Negative control: Unimmunized goat IgG (10ug/ml) followed by Alexa Fluor 488 secondary antibody (4ug/ml).



EB12622-P1 Immunofluorescence analysis of paraformaldehyde fixed U2OS cells, permeabilized with 0.15% Triton. Primary incubation 1hr (10ug/ml) followed by Alexa Fluor 488 secondary antibody (4ug/ml), showing Mitochondrial staining. The nuclear stain is DAPI (blue). Negative control: Unimmunized goat IgG (10ug/ml) followed by Alexa Fluor 488 secondary antibody (4ug/ml).



EB12622 (5µg/ml) staining of paraffin embedded Human Liver. Steamed antigen retrieval with citrate buffer pH 6, AP-staining.