



UK Office

Everest Biotech Ltd

Cherwell Innovation Centre
77 Heyford Park
Upper Heyford
Oxfordshire
OX25 5HD
UK

Enquiries:

info@everestbiotech.com

Sales:

sales@everestbiotech.com

Tech support:

support@everestbiotech.com

Tel: +44 (0)1869 238326

Fax: +44 (0)1869 238327

US Office

Everest Biotech c/o Abcore

405 Maple Street, Suite A106
Ramona,
CA 92065
USA

Inquiries:

info@everestbiotech.com

Sales:

usasales@everestbiotech.com

Tech support:

support@everestbiotech.com

Tel: 888-320-4628 (toll-free)

Fax: 888-841-9041

www.everestbiotech.com

**Research Use Only. Not for
diagnostic or therapeutic use.**

EB11512 - Goat Anti-AIMP1 / SCYE1 (aa137-149) Antibody

Size: 100µg specific antibody in 200µl



Target Protein

Principal Names: AIMP1, aminoacyl tRNA synthase complex-interacting multifunctional protein 1, aminoacyl tRNA synthetase complex-interacting multifunctional protein 1, ARS-interacting multifunctional protein 1, EMAP2, EMAPII, endothelial monocyte-activating polypeptide 2, endothelial-monocyte activating polypeptide II, HLD3, multisynthase complex auxiliary component p43, multisynthetase complex auxiliary component p43, OTTHUMP00000161877, OTTHUMP00000161878, OTTHUMP00000219673, p43, SCYE1, small inducible cytokine subfamily E, member 1 (endothelial monocyte-activating)

Official Symbol: AIMP1

Accession Number(s): NP_004748.2; NP_001135888.1

Human GeneID(s): [9255](#)

Important Comments: This antibody is expected to recognize both reported isoforms (NP_004748.2; NP_001135888.1). Reported variants represent identical protein: NP_004748.2, NP_001135887.1

Immunogen

Peptide with sequence C-KQQSIAGSADSKP, from the internal region of the protein sequence according to NP_004748.2; NP_001135888.1.

Please note the [peptide](#) is available for sale.

Purification and Storage

Purified from goat serum by ammonium sulphate precipitation followed by antigen affinity chromatography using the immunizing peptide.

Supplied at 0.5 mg/ml in Tris saline, 0.02% sodium azide, pH7.3 with 0.5% bovine serum albumin.

Aliquot and store at -20°C. Minimize freezing and thawing.

Applications Tested

Peptide ELISA: antibody detection limit dilution 1:32000.

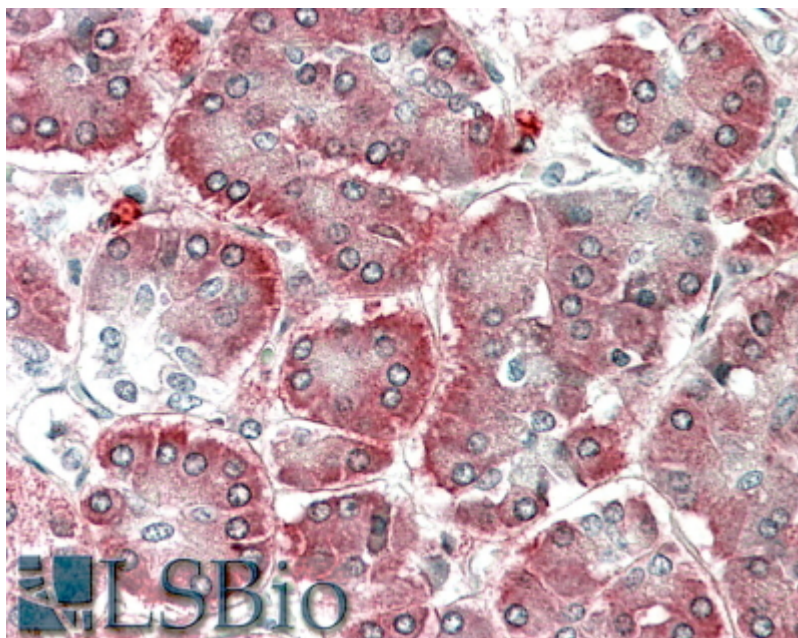
Western blot: Approx 37kDa band observed in Human Lymph Node and Uterus lysates (calculated MW of 37.0kDa according to NP_001135887.1). Recommended concentration: 0.1-0.3µg/ml.

IHC: In paraffin embedded Human Pancreas shows staining in the cytoplasm towards the alpha cells periphery. Recommended concentration, 5-10µg/ml.

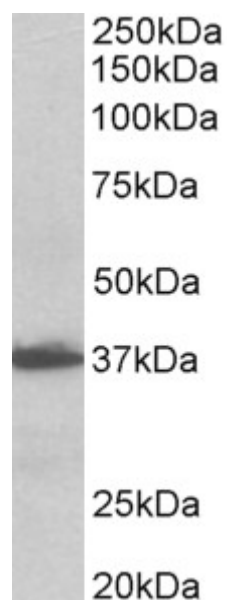
Species Reactivity

Tested: Human

Expected from sequence similarity: Human, Dog, Pig



EB11512 (5 μ g/ml) staining of paraffin embedded Human Pancreas. Steamed antigen retrieval with citrate buffer pH 6, AP-staining.



EB11512 (0.1 μ g/ml) staining of Human Lymph Node lysate (35 μ g protein in RIPA buffer). Primary incubation was 1 hour. Detected by chemiluminescence.