

## UK Office

### Everest Biotech Ltd

Cherwell Innovation Centre  
77 Heyford Park  
Upper Heyford  
Oxfordshire  
OX25 5HD  
UK

Enquiries:

[info@everestbiotech.com](mailto:info@everestbiotech.com)

Sales:

[sales@everestbiotech.com](mailto:sales@everestbiotech.com)

Tech support:

[support@everestbiotech.com](mailto:support@everestbiotech.com)

Tel: +44 (0)1869 238326

[www.everestbiotech.com](http://www.everestbiotech.com)

**Research Use Only. Not for  
diagnostic or therapeutic use.**

## EB11511 - Goat Anti-AIMP1 / SCYE1 Antibody

Size: 100µg specific antibody in 200µl



### Target Protein

**Principal Names:** AIMP1, aminoacyl tRNA synthase complex-interacting multifunctional protein 1, aminoacyl tRNA synthetase complex-interacting multifunctional protein 1, ARS-interacting multifunctional protein 1, EMAP2, EMAPII, endothelial monocyte-activating polypeptide 2, endothelial-monocyte activating polypeptide II, HLD3, multisynthase complex auxiliary component p43, multisynthetase complex auxiliary component p43, OTTHUMP00000161877, OTTHUMP00000161878, OTTHUMP00000219673, p43, SCYE1, small inducible cytokine subfamily E, member 1 (endothelial monocyte-activating)

**Official Symbol:** AIMP1

**Accession Number(s):** NP\_004748.2; NP\_001135888.1

**Human GeneID(s):** [9255](#)

**Non-Human GeneID(s):** 13722 (mouse), 114632 (rat)

**Important Comments:** This antibody is expected to recognize both reported isoforms (NP\_004748.2; NP\_001135888.1). Reported variants represent identical protein: NP\_004748.2, NP\_001135887.1

### Immunogen

Peptide with sequence NNDVAVLKRLEQK-C, from the N Terminus of the protein sequence according to NP\_004748.2; NP\_001135888.1.

Please note the [peptide](#) is available for sale.

### Purification and Storage

Purified from goat serum by ammonium sulphate precipitation followed by antigen affinity chromatography using the immunizing peptide.

Supplied at 0.5 mg/ml in Tris saline, 0.02% sodium azide, pH7.3 with 0.5% bovine serum albumin.

Aliquot and store at -20°C. Minimize freezing and thawing.

### Applications Tested

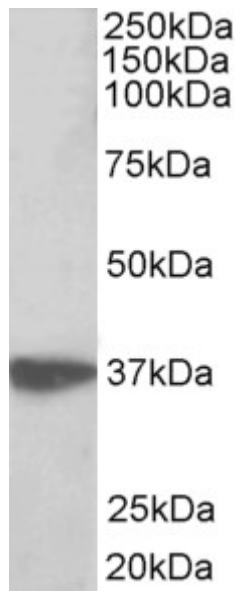
**Peptide ELISA:** antibody detection limit dilution 1:16000.

**Western blot:** Approx 37kDa band observed in lysates of cell lines HeLa and Jurkat, and in lysates of Mouse and Rat Spleen (calculated MW of 37kDa according to NP\_001135887.1). Recommended concentration: 0.3-1µg/ml.

### Species Reactivity

**Tested:** Human, Mouse, Rat

**Expected from sequence similarity:** Human, Mouse, Rat, Pig, Cow



EB11511 (0.3 $\mu$ g/ml) staining of Jurkat lysate (35 $\mu$ g protein in RIPA buffer). Primary incubation was 1 hour.  
Detected by chemiluminescence.