

## UK Office

### Everest Biotech Ltd

Cherwell Innovation Centre  
77 Heyford Park  
Upper Heyford  
Oxfordshire  
OX25 5HD  
UK

Enquiries:

[info@everestbiotech.com](mailto:info@everestbiotech.com)

Sales:

[sales@everestbiotech.com](mailto:sales@everestbiotech.com)

Tech support:

[support@everestbiotech.com](mailto:support@everestbiotech.com)

Tel: +44 (0)1869 238326

[www.everestbiotech.com](http://www.everestbiotech.com)

**Research Use Only. Not for  
diagnostic or therapeutic use.**

## EB07585 - Goat Anti-AIRE Antibody

Size: 100µg specific antibody in 200µl



### Target Protein

**Principal Names:** AIRE, autoimmune regulator (autoimmune polyendocrinopathy candidiasis ectodermal dystrophy), AIRE1, APECED, APS1, APSI, PGA1, autoimmune regulator (APECED protein), autoimmune regulator (automimmune polyendocrinopathy candidiasis ectodermal dystrophy), autoimmune regulator AIRE

**Official Symbol:** AIRE

**Accession Number(s):** NP\_000374.1

**Human GeneID(s):** [326](#)

**Non-Human GeneID(s):** 11634 (mouse)

### Immunogen

Peptide with sequence C-KAKPPKKPESSAEQ, from the internal region of the protein sequence according to NP\_000374.1.

Please note the [peptide](#) is available for sale.

### Purification and Storage

Purified from goat serum by ammonium sulphate precipitation followed by antigen affinity chromatography using the immunizing peptide.

Supplied at 0.5 mg/ml in Tris saline, 0.02% sodium azide, pH7.3 with 0.5% bovine serum albumin.

Aliquot and store at -20°C. Minimize freezing and thawing.

### Applications Tested

**Peptide ELISA:** antibody detection limit dilution 1:64000.

**Western blot:** Approx 55kDa band observed in human spleen lysates (calculated MW of 57.7kDa according to NP\_000374.1). Recommended concentration: 0.3-1µg/ml.

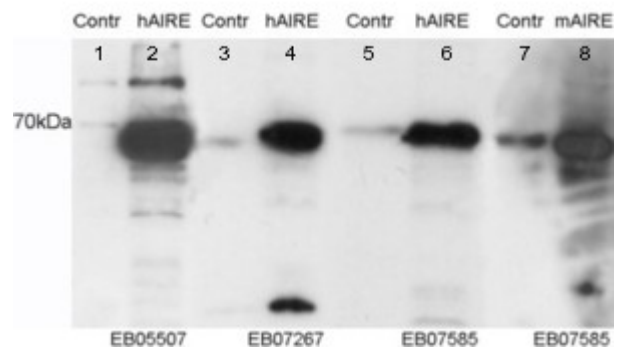
### Species Reactivity

**Tested:** Human, Mouse

**Expected from sequence similarity:** Human, Rat, Pig, Cow



EB07585 (0.3µg/ml) staining of human spleen lysate (35µg protein in RIPA buffer). Primary incubation was 1 hour. Detected by chemiluminescence.



EB07585 staining (0.05µg/ml) of HEK293 cell lysates. Untransfected (Lane 5 and 7) and transfected with Human AIRE (lane 6) or Mouse AIRE (lane 7). Data kindly provided by Prof. Pärt Peterson, University of Tartu, Estonia.