



Everest Biotech Ltd
Cherwell Innovation Centre
77 Heyford Park
Upper Heyford
Oxfordshire
OX25 5HD, United Kingdom

everestbiotech.com

sales@everestbiotech.com

support@everestbiotech.com

Tel +44 1869 238326

Fax +44 1869 238327

**Research Use Only. Not for
diagnostic or therapeutic use.**

Storage: For long-term storage
keep aliquots at -20°C. (Store no
longer than 12 months at 4°C).
Minimize freezing and thawing.

EB05507 - Goat Anti-AIRE (isoforms 1 and 2) Antibody

Size: 100µg specific antibody in 200µl



Target Protein

Principal Names: autoimmune polyendocrinopathy candidiasis ectodermal dystrophy, OTTHUMP00000109529, AIRE1, autoimmune regulator, autoimmune regulator (autoimmune polyendocrinopathy candidiasis ectodermal dystrophy), autoimmune regulator (APECED protein), AIRE protein, APECED, PGA1, APSI, APS1, autoimmune regulator (automimmune polyendocrinopathy candidiasis ectodermal dystrophy), AIRE

Official Symbol: AIRE

Accession Number(s): NP_000374.1, NP_000649.1

Human GeneID(s): [326](#)

Important Comments: This antibody is expected to recognize isoforms 1 and 2 (NP_000374.1 and NP_000649.1 respectively).

Immunogen

Peptide with sequence C-QSMARPAAPFPS, from the C Terminus of the protein sequence according to NP_000374.1, NP_000649.1.

Please note the [peptide](#) is available for sale.

Purification and Storage

Purified from goat serum by ammonium sulphate precipitation followed by antigen affinity chromatography using the immunizing peptide.

Supplied at 0.5 mg/ml in Tris saline, 0.02% sodium azide, pH7.3 with 0.5% bovine serum albumin.

Aliquot and store at -20°C. Minimize freezing and thawing.

Applications Tested

Peptide ELISA: antibody detection limit dilution 1:32000.

Western blot: Appr. 60kDa in transfected HEK293 lysates (calculated MW of 57.7kDa according to NP_000374.1). Recommended concentration: 0.01-0.03µg/ml.

IHC: In paraffin embedded Human Thymic medulla shows staining of select nuclei. Recommended concentration, 2.5µg/ml.

Chromatin immunoprecipitation: A customer has reported this antibody was successful in ChIP (no data).

Species Reactivity

Tested: Human

Expected from sequence similarity: Human

Specific Reference

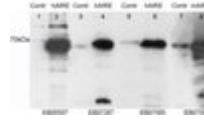
The goat polyclonal antibody used in this paper was manufactured by us:

Ruan QG, Tung K, Eisenman D, Setiady Y, Eckenrode S, Yi B, Purohit S, Zheng WP, Zhang Y, Peltonen L, She JX.

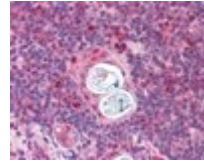
The autoimmune regulator directly controls the expression of genes critical for thymic epithelial function.

J Immunol. 2007 Jun 1;178(11):7173-80.

PMID: 17513766



EB05507 staining (0.01 μ g/ml) of HEK293 cell lysate. Untransfected (Lane 1) and transfected with Human AIRE (lane 2). Data kindly provided by Prof. Pärt Peterson, University of Tartu, Estonia.



EB05507 (2.5 μ g/ml) staining of paraffin embedded Human Thymus. Steamed antigen retrieval with citrate buffer pH 6, AP-staining.