



UK Office

Everest Biotech Ltd

Cherwell Innovation Centre
77 Heyford Park
Upper Heyford
Oxfordshire
OX25 5HD
UK

Enquiries:

info@everestbiotech.com

Sales:

sales@everestbiotech.com

Tech support:

support@everestbiotech.com

Tel: +44 (0)1869 238326

www.everestbiotech.com

**Research Use Only. Not for
diagnostic or therapeutic use.**

EB08645 - Goat Anti-AKAP10 Antibody

Size: 100µg specific antibody in 200µl



Target Protein

Principal Names: AKAP10, A kinase (PRKA) anchor protein 10, D-AKAP2, MGC9414, PRKA10, A-kinase anchor protein 10, dual-specificity A-kinase anchoring protein 2, mitochondrial A kinase PPKA anchor protein 10, protein kinase A anchoring protein 10

Official Symbol: AKAP10

Accession Number(s): NP_009133.2

Human GeneID(s): [11216](#)

Non-Human GeneID(s): 56697 (mouse), 360540 (rat)

Immunogen

Peptide with sequence C-RKVKGKEQEKTSD, from the internal region of the protein sequence according to NP_009133.2.

Please note the [peptide](#) is available for sale.

Purification and Storage

Purified from goat serum by ammonium sulphate precipitation followed by antigen affinity chromatography using the immunizing peptide.

Supplied at 0.5 mg/ml in Tris saline, 0.02% sodium azide, pH7.3 with 0.5% bovine serum albumin.

Aliquot and store at -20°C. Minimize freezing and thawing.

Applications Tested

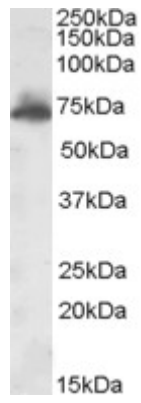
Peptide ELISA: antibody detection limit dilution 1:64000.

Western blot: Approx. 74kDa band observed in Rat Brain lysates (calculated MW of 73.8kDa according to Human NP_009133.2 and according to Rat NP_001108078.1). Recommended concentration: 0.3-1µg/ml.

Species Reactivity

Tested: Rat

Expected from sequence similarity: Human, Mouse, Rat, Dog, Cow



EB08645 (1 μ g/ml) staining of Rat Brain lysate (35 μ g protein in RIPA buffer). Primary incubation was 1 hour.
Detected by chemiluminescence.