



## UK Office

### Everest Biotech Ltd

Cherwell Innovation Centre  
77 Heyford Park  
Upper Heyford  
Oxfordshire  
OX25 5HD  
UK

Enquiries:

[info@everestbiotech.com](mailto:info@everestbiotech.com)

Sales:

[sales@everestbiotech.com](mailto:sales@everestbiotech.com)

Tech support:

[support@everestbiotech.com](mailto:support@everestbiotech.com)

Tel: +44 (0)1869 238326

Fax: +44 (0)1869 238327

## US Office

### Everest Biotech c/o Abcore

405 Maple Street, Suite A106  
Ramona,  
CA 92065  
USA

Inquiries:

[info@everestbiotech.com](mailto:info@everestbiotech.com)

Sales:

[usasales@everestbiotech.com](mailto:usasales@everestbiotech.com)

Tech support:

[support@everestbiotech.com](mailto:support@everestbiotech.com)

Tel: 888-320-4628 (toll-free)

Fax: 888-841-9041

[www.everestbiotech.com](http://www.everestbiotech.com)

**Research Use Only. Not for  
diagnostic or therapeutic use.**

## EB06326 - Goat Anti-AKAP8 / AKAP95 Antibody

Size: 100µg specific antibody in 200µl



### Target Protein

**Principal Names:** AKAP8, AKAP95, DKFZp586B1222, A kinase (PRKA) anchor protein 8, A kinase anchor protein 95, A-kinase anchor protein 8, A-kinase anchor protein, 95kDa

**Official Symbol:** AKAP8

**Accession Number(s):** NP\_005849.1

**Human GeneID(s):** [10270](#)

**Non-Human GeneID(s):** 56399 (mouse), 116633 (rat)

### Immunogen

Peptide with sequence DQGYGGYGAWSAG-C, from the N Terminus of the protein sequence according to NP\_005849.1.

Please note the [peptide](#) is available for sale.

### Purification and Storage

Purified from goat serum by ammonium sulphate precipitation followed by antigen affinity chromatography using the immunizing peptide.

Supplied at 0.5 mg/ml in Tris saline, 0.02% sodium azide, pH7.3 with 0.5% bovine serum albumin.

Aliquot and store at -20°C. Minimize freezing and thawing.

### Applications Tested

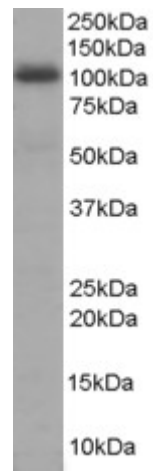
**Peptide ELISA:** antibody detection limit dilution 1:32000.

**Western blot:** Experiments gave a band at approx 100kDa in Human Liver lysate after 1µg/ml antibody staining. This band corresponds to the 95kDa band reported in literature (PMID: 10601332). This protein has a calculated MW of 76.1kDa according to NP\_005849. Recommended concentration: 1-3µg/ml.

### Species Reactivity

**Tested:** Human

**Expected from sequence similarity:** Human, Mouse, Rat, Cow



EB06326 staining (1 $\mu$ g/ml) of Human Liver lysate (RIPA buffer, 35 $\mu$ g total protein per lane). Primary incubated for 1 hour. Detected by western blot using chemiluminescence.