



UK Office

Everest Biotech Ltd

Cherwell Innovation Centre
77 Heyford Park
Upper Heyford
Oxfordshire
OX25 5HD
UK

Enquiries:

info@everestbiotech.com

Sales:

sales@everestbiotech.com

Tech support:

support@everestbiotech.com

Tel: +44 (0)1869 238326

www.everestbiotech.com

**Research Use Only. Not for
diagnostic or therapeutic use.**

EB07691 - Goat Anti-AKT1 Antibody

Size: 100µg specific antibody in 200µl



Target Protein

Principal Names: AKT1, v-akt murine thymoma viral oncogene homolog 1, AKT, MGC99656, PKB, PRKBA, RAC, RAC-ALPHA, RAC-alpha serine/threonine-protein kinase, murine thymoma viral (v-akt) oncogene homolog-1, protein kinase B, rac protein kinase alpha

Official Symbol: AKT1

Accession Number(s): NP_005154.2; NP_001014431.1; NP_001014432.1

Human GeneID(s): [207](#)

Important Comments: All variants represent identical protein (NP_005154.2, NP_001014431.1, NP_001014432.1). This antibody is NOT expected to cross-react with AKT2. It may recognize AKT1 in Rat and Dog.

Immunogen

Peptide with sequence C-QDVDQREAPLN, from the internal region of the protein sequence according to NP_005154.2; NP_001014431.1; NP_001014432.1.

Please note the [peptide](#) is available for sale.

Purification and Storage

Purified from goat serum by ammonium sulphate precipitation followed by antigen affinity chromatography using the immunizing peptide.

Supplied at 0.5 mg/ml in Tris saline, 0.02% sodium azide, pH7.3 with 0.5% bovine serum albumin.

Aliquot and store at -20°C. Minimize freezing and thawing.

Applications Tested

Peptide ELISA: antibody detection limit dilution 1:32000.

Western blot: Approx 60kDa band observed in MCF7 cell lysates and approx. 55kDa in preliminary testing of K562 and NIH3T3 cell lysate (calculated MW of 55.7kDa according to NP_005154.2). These molecular weights are observed by other commercial sources. Recommended concentration: 0.1-0.3µg/ml. Primary incubation 1 hour at room temperature.

Immunofluorescence: Strong expression of the protein seen in the microtubules/cytoplasm of HeLa cells. Recommended concentration: 10µg/ml.

Flow Cytometry: Flow cytometric analysis of MCF7 cells. Recommended concentration: 10µg/ml.

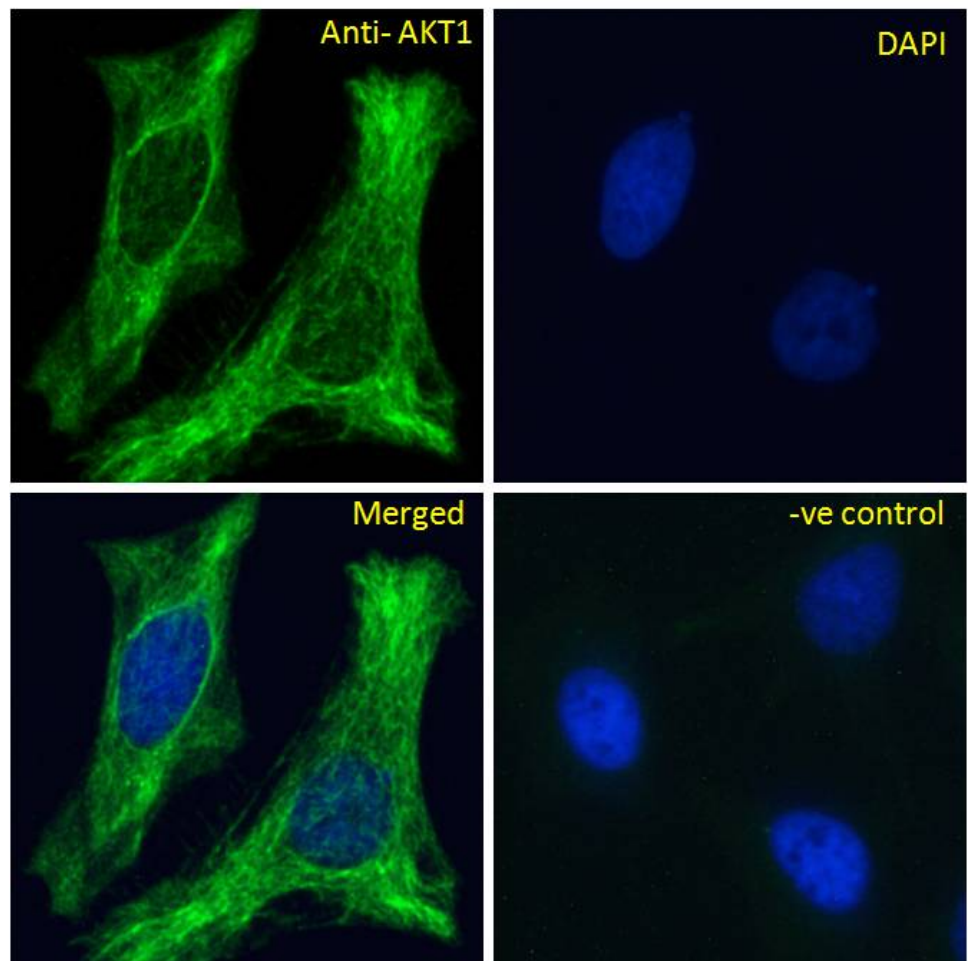
Species Reactivity

Tested: Human

Expected from sequence similarity: Human, Mouse

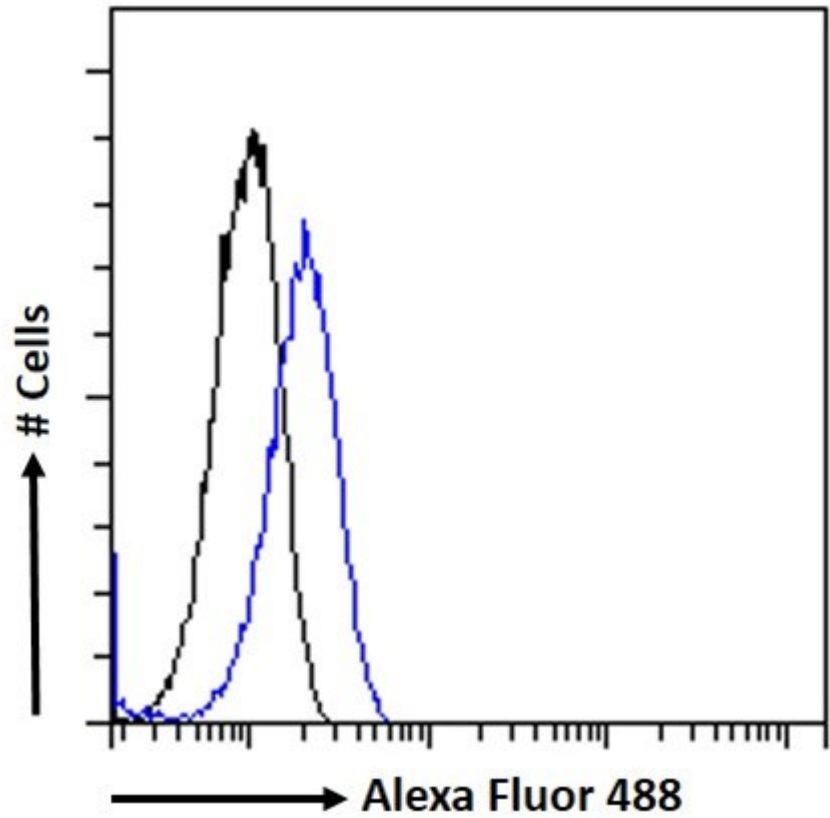


EB07691 (0.3 μ g/ml) staining of MCF7 cell lysate (35 μ g protein in RIPA buffer). Detected by chemiluminescence.



EB07691 Immunofluorescence analysis of paraformaldehyde fixed HeLa cells, permeabilized with 0.15% Triton. Primary incubation 1hr (10 μ g/ml) followed by Alexa Fluor 488 secondary antibody (2 μ g/ml), showing Microtubule/cytoplasmic staining. The nuclear stain is DAPI (blue). Negative control: Unimmunized goat IgG

(10ug/ml) followed by Alexa Fluor 488 secondary antibody (2ug/ml).



EB07691 Flow cytometric analysis of paraformaldehyde fixed MCF7 cells (blue line), permeabilized with 0.5% Triton. Primary incubation 1hr (10ug/ml) followed by Alexa Fluor 488 secondary antibody (1ug/ml). IgG control: Unimmunized goat IgG (black line) followed by Alexa Fluor 488 secondary antibody.