



UK Office

Everest Biotech Ltd

Cherwell Innovation Centre
77 Heyford Park
Upper Heyford
Oxfordshire
OX25 5HD
UK

Enquiries:

info@everestbiotech.com

Sales:

sales@everestbiotech.com

Tech support:

support@everestbiotech.com

Tel: +44 (0)1869 238326

Fax: +44 (0)1869 238327

US Office

Everest Biotech c/o Abcore

405 Maple Street, Suite A106
Ramona,
CA 92065
USA

Inquiries:

info@everestbiotech.com

Sales:

usasales@everestbiotech.com

Tech support:

support@everestbiotech.com

Tel: 888-320-4628 (toll-free)

Fax: 888-841-9041

www.everestbiotech.com

**Research Use Only. Not for
diagnostic or therapeutic use.**

EB06772 - Goat Anti-AKT2 Antibody

Size: 100µg specific antibody in 200µl



Target Protein

Principal Names: AKT2, v-akt murine thymoma viral oncogene homolog 2, HGNC:392, PKKBETA, PRKBB, RAC-BETA, Murine thymoma viral (v-akt) homolog-2, rac protein kinase beta

Official Symbol: AKT2

Accession Number(s): NP_001617.1; NP_001229956.1; NP_001317440.1

Human GeneID(s): [208](#)

Important Comments: This antibody is expected to recognise all reported isoforms NP_001617.1; NP_001229956.1; NP_001317440.1.

Immunogen

Peptide with sequence C-RYDSLGLLELDQRT, from the C Terminus of the protein sequence according to NP_001617.1; NP_001229956.1; NP_001317440.1.

Please note the [peptide](#) is available for sale.

Purification and Storage

Purified from goat serum by ammonium sulphate precipitation followed by antigen affinity chromatography using the immunizing peptide.

Supplied at 0.5 mg/ml in Tris saline, 0.02% sodium azide, pH7.3 with 0.5% bovine serum albumin.

Aliquot and store at -20°C. Minimize freezing and thawing.

Applications Tested

Peptide ELISA: antibody detection limit dilution 1:16000.

Western blot: Approx. 58-60kDa band observed in Human Skeletal Muscle lysates and in Rat Testis lysates, and approx.60kDa in Human Testis lysates, and in preliminary testing of THP-1 cell lysate (calculated MW of 55.8kDa according to Human NP_001617.1 and 55.5kDa according to Rat NP_058789.1). Recommended concentration: 0.5-1µg/ml.

Primary incubation 1 hour at room temperature

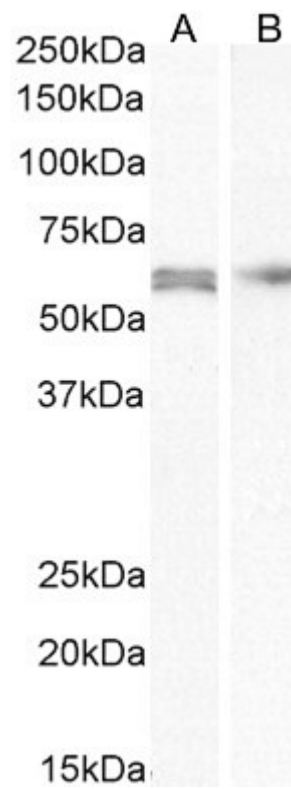
IHC: Paraffin embedded Human Testis. Recommended concentration: 4-6µg/ml.

Flow Cytometry: A customer reported weak staining on THP-1 cells at a concentration of 10ug/ml.

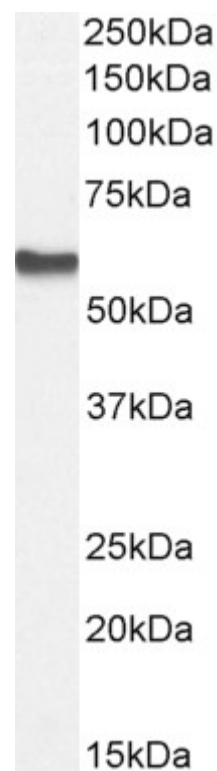
Species Reactivity

Tested: Human, Rat

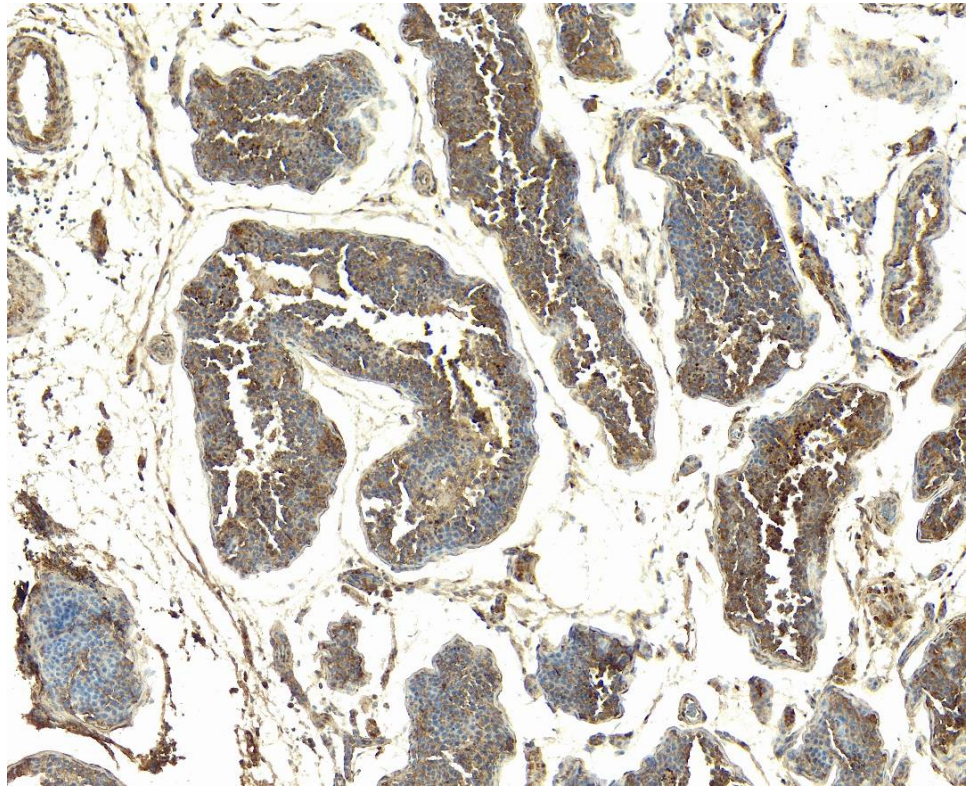
Expected from sequence similarity: Human, Mouse, Rat, Dog



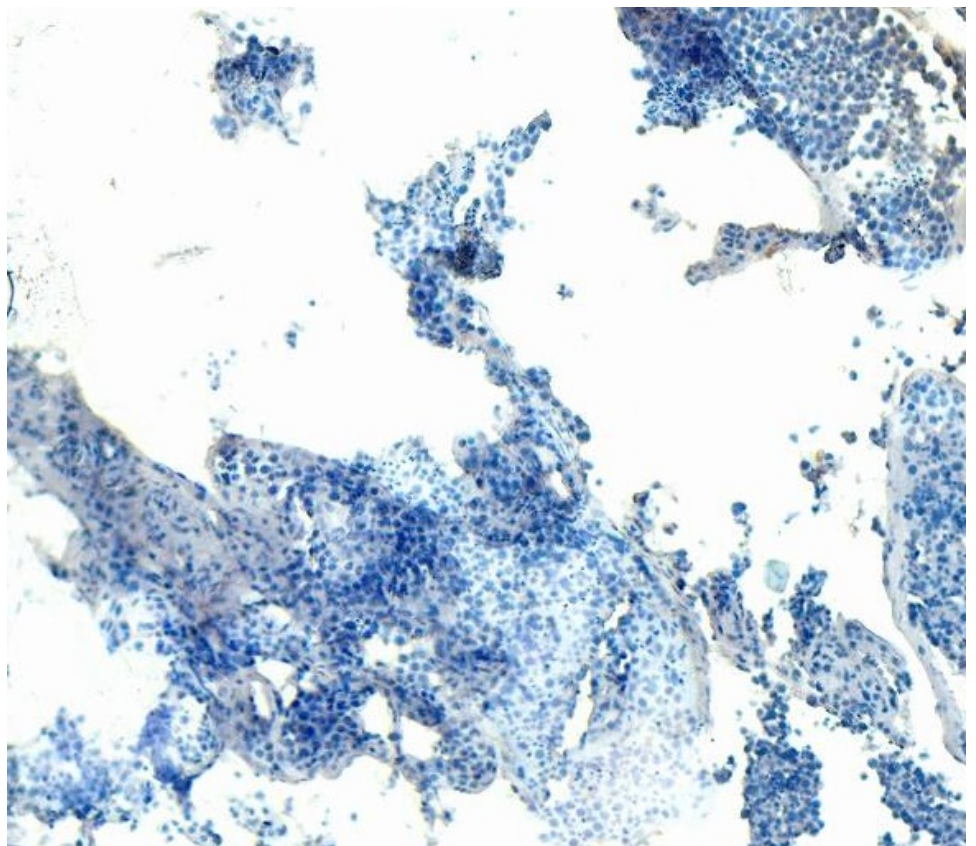
EB06772 (1 μ g/ml) staining of Human Skeletal Muscle (A) and (0.75 μ g/ml) Human Testes (B) lysate (35 μ g protein in RIPA buffer). Detected by chemiluminescence.



EB06772 (1 μ g/ml) staining of Rat Testes lysate (35 μ g protein in RIPA buffer). Detected by chemiluminescence.



EB06772 (4 μ g/ml) staining of paraffin embedded Human Testis. Heat induced antigen retrieval with citrate buffer pH 6, HRP-staining.



EB06772 Negative Control showing staining of paraffin embedded Human Testis, with no primary antibody.