



Everest Biotech Ltd
Cherwell Innovation Centre
77 Heyford Park
Upper Heyford
Oxfordshire
OX25 5HD, United Kingdom

everestbiotech.com

sales@everestbiotech.com

support@everestbiotech.com

Tel +44 1869 238326

Fax +44 1869 238327

**Research Use Only. Not for
diagnostic or therapeutic use.**

Storage: For long-term storage
keep aliquots at -20°C. (Store no
longer than 12 months at 4°C).
Minimize freezing and thawing.

EB06562-T - Goat Anti-AKT3 Antibody - Trial

Size: 20µg specific antibody in 40µl



Target Protein

Principal Names: RAC-gamma serine/threonine protein kinase, serine threonine protein kinase, Akt-3, protein kinase B gamma, v-akt murine thymoma viral oncogene homolog 3 (protein kinase B, gamma), DKFZP434N0250, RAC-PK-gamma, RAC-gamma, STK-2, PRKBG, PKBG, AKT3

Official Symbol: AKT3

Accession Number(s): NP_005456.1; NP_859029.1

Human GeneID(s): [10000](#)

Important Comments: This antibody is expected to recognise an epitope corresponding to aa 119-133 of both isoforms of human AKT3 protein. This antibody does not cross-react with human AKT1/2. Reported variants represent identical protein (NP_859029.1; NP_001193658.1).

Immunogen

Peptide with sequence CSPTSQIDNIGEEEM, from the internal region of the protein sequence according to NP_005456.1; NP_859029.1.

Please note the [peptide](#) is available for sale.

Purification and Storage

Purified from goat serum by ammonium sulphate precipitation followed by antigen affinity chromatography using the immunizing peptide.

Supplied at 0.5 mg/ml in Tris saline, 0.02% sodium azide, pH7.3 with 0.5% bovine serum albumin.

Aliquot and store at -20°C. Minimize freezing and thawing.

Applications Tested

Peptide ELISA: antibody detection limit dilution 1:16000.

Western blot: A 50-55kDa band observed in lysates of cell lines HepG2 and NIH3T3 and in Mouse and Rat Brain lysates (calculated MW of 54.0kDa according to NP_859029.1).

Recommended concentration: 1-3µg/ml.

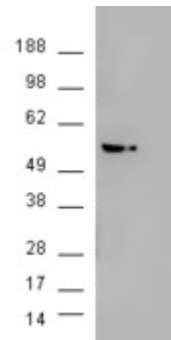
Species Reactivity

Tested: Human, Mouse, Rat

Expected from sequence similarity: Human, Mouse, Rat, Dog, Cow



EB06562 (1 μ g/ml) staining of HepG2lysate (35 μ g protein in RIPA buffer). Primary incubation was 1 hour.
Detected by chemiluminescence.



HEK293 overexpressing AKT3 (RC224750) and probed with EB06562 (mock transfection in second lane), tested
by Origene.