



Everest Biotech Ltd
Cherwell Innovation Centre
77 Heyford Park
Upper Heyford
Oxfordshire
OX25 5HD, United Kingdom

everestbiotech.com

sales@everestbiotech.com

support@everestbiotech.com

Tel +44 1869 238326

Fax +44 1869 238327

**Research Use Only. Not for
diagnostic or therapeutic use.**

Storage: For long-term storage
keep aliquots at -20°C. (Store no
longer than 12 months at 4°C).
Minimize freezing and thawing.

EB05538 - Goat Anti-Aldehyde Reductase Antibody

Size: 100µg specific antibody in 200µl



Target Protein

Principal Names: dihydrodiol dehydrogenase 3, OTTHUMP0000009240, DD3, aldo-keto reductase family 1, member A1, alcohol dehydrogenase, MGC1380, MGC12529, ALR, ALDR1, aldo-keto reductase family 1, member A1 (aldehyde reductase), AKR1A1, aldehyde reductase

Official Symbol: AKR1A1

Accession Number(s): NP_006057.1; NP_697021.1

Human GeneID(s): [10327](#)

Non-Human GeneID(s): 58810 (mouse), 78959 (rat)

Important Comments: Both reported variants (NP_006057.1 and NP_697021.1) represent identical protein

Immunogen

Peptide with sequence C-DAGHPLYPFNDPY, from the C Terminus of the protein sequence according to NP_006057.1; NP_697021.1.

Please note the [peptide](#) is available for sale.

Purification and Storage

Purified from goat serum by ammonium sulphate precipitation followed by antigen affinity chromatography using the immunizing peptide.

Supplied at 0.5 mg/ml in Tris saline, 0.02% sodium azide, pH7.3 with 0.5% bovine serum albumin.

Aliquot and store at -20°C. Minimize freezing and thawing.

Applications Tested

Peptide ELISA: antibody detection limit dilution 1:16000.

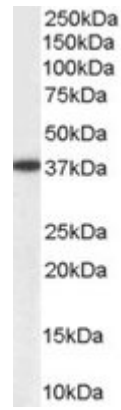
Western blot: Approx 37kDa band observed in Human Liver and Human Placenta lysates. In transfected HEK293 transiently expressing Human AKR1A1 a band of approx. 40kDa is observed. This band is not observed in the non-transfected HEK293. (calculated MW of 36.6kDa according to NP_006057.1 and NP_697021.1). Recommended concentration: 0.1-0.3µg/ml.

IHC: In paraffin embedded Human Kidney shows Brush Border staining in PCT. Recommended concentration, 2-3µg/ml.

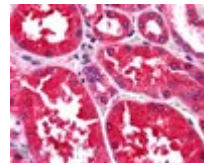
Species Reactivity

Tested: Human

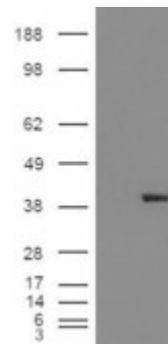
Expected from sequence similarity: Human, Mouse, Rat, Dog, Pig, Cow



EB05538 (0.1µg/ml) staining of Human Liver lysate (35µg protein in RIPA buffer). Primary incubation was 1 hour. Detected by chemiluminescence.chemiluminescence.



EB05538 (2.5g/ml) staining of paraffin embedded Human Kidney. Steamed antigen retrieval with citrate buffer pH 6, AP-staining.



HEK293 overexpressing AKR1A1 (RC200302) and probed with EB05538 (mock transfection in first lane), tested by Origene.