

## UK Office

### Everest Biotech Ltd

Cherwell Innovation Centre  
77 Heyford Park  
Upper Heyford  
Oxfordshire  
OX25 5HD  
UK

Enquiries:

[info@everestbiotech.com](mailto:info@everestbiotech.com)

Sales:

[sales@everestbiotech.com](mailto:sales@everestbiotech.com)

Tech support:

[support@everestbiotech.com](mailto:support@everestbiotech.com)

Tel: +44 (0)1869 238326

[www.everestbiotech.com](http://www.everestbiotech.com)

**Research Use Only. Not for  
diagnostic or therapeutic use.**

## EB10433 - Goat Anti-ALDH18A1 Antibody

Size: 100µg specific antibody in 200µl



### Target Protein

**Principal Names:** aldehyde dehydrogenase 18 family, member A1, aldehyde dehydrogenase 18A1, delta1-pyrroline-5-carboxylate synthetase, GSAS, MGC117316, P5CS, PYCS, pyrroline-5-carboxylate synthetase (glutamate gamma-semialdehyde synthetase), ALDH18A1

**Official Symbol:** ALDH18A1

**Accession Number(s):** NP\_002851.2; NP\_001017423.1

**Human GeneID(s):** [5832](#)

**Non-Human GeneID(s):** 56454 (mouse), 361755 (rat)

**Important Comments:** This antibody is expected to recognize both reported isoforms (NP\_002851.2; NP\_001017423.1).

### Immunogen

Peptide with sequence C-SEHGSLKYLH, from the C Terminus of the protein sequence according to NP\_002851.2; NP\_001017423.1.

Please note the [peptide](#) is available for sale.

### Purification and Storage

Purified from goat serum by ammonium sulphate precipitation followed by antigen affinity chromatography using the immunizing peptide.

Supplied at 0.5 mg/ml in Tris saline, 0.02% sodium azide, pH7.3 with 0.5% bovine serum albumin.

Aliquot and store at -20°C. Minimize freezing and thawing.

### Applications Tested

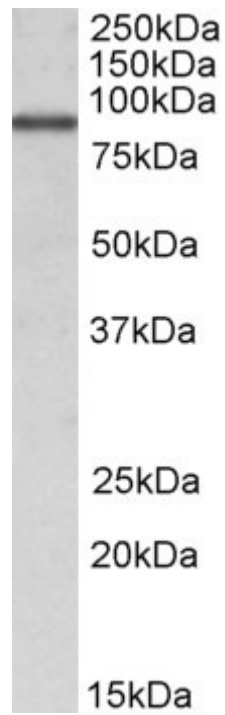
**Peptide ELISA:** antibody detection limit dilution 1:8000.

**Western blot:** Approx 85kDa band observed in lysates of cell lines NIH3T3 and MCF7 (calculated MW of 87.3kDa according to NP\_002851.2). Recommended concentration: 1-3µg/ml.

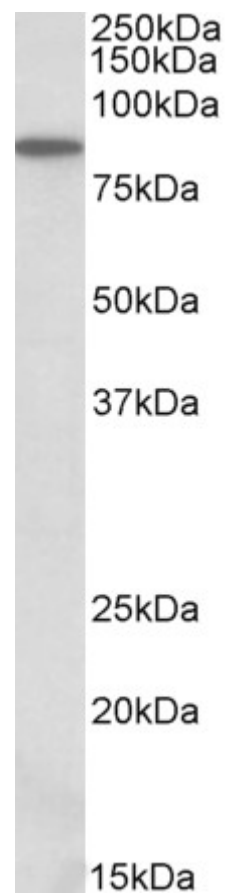
### Species Reactivity

**Tested:** Human, Mouse

**Expected from sequence similarity:** Human, Mouse, Rat, Dog, Cow, Pig



EB10433 (1 $\mu$ g/ml) staining of MCF7 lysate (35 $\mu$ g protein in RIPA buffer). Primary incubation was 1 hour.  
Detected by chemiluminescence.



EB10433 (0.3 $\mu$ g/ml) staining of NIH3T3 lysate (35 $\mu$ g protein in RIPA buffer). Primary incubation was 1 hour.  
Detected by chemiluminescence.