



UK Office

Everest Biotech Ltd

Cherwell Innovation Centre
77 Heyford Park
Upper Heyford
Oxfordshire
OX25 5HD
UK

Enquiries:

info@everestbiotech.com

Sales:

sales@everestbiotech.com

Tech support:

support@everestbiotech.com

Tel: +44 (0)1869 238326

Fax: +44 (0)1869 238327

US Office

Everest Biotech c/o Abcore

405 Maple Street, Suite A106
Ramona,
CA 92065
USA

Inquiries:

info@everestbiotech.com

Sales:

usasales@everestbiotech.com

Tech support:

support@everestbiotech.com

Tel: 888-320-4628 (toll-free)

Fax: 888-841-9041

www.everestbiotech.com

**Research Use Only. Not for
diagnostic or therapeutic use.**

EB07138 - Goat Anti-ALDH1A1 (Internal) Antibody

Size: 100µg specific antibody in 200µl



Target Protein

Principal Names: ALDH1A1, aldehyde dehydrogenase 1 family, member A1, ALDC, ALDH-E1, ALDH1, ALDH11, MGC2318, PUMB1, RALDH1, ALDH class 1, acetaldehyde dehydrogenase 1, aldehyde dehydrogenase 1, soluble, aldehyde dehydrogenase 1A1, aldehyde dehydrogenase, liver cytosolic, retinal dehydrogenase 1

Official Symbol: ALDH1A1

Accession Number(s): NP_000680.2

Human GeneID(s): [216](#)

Immunogen

Peptide with sequence C-RELGEYGFHEYTE, from the internal region of the protein sequence according to NP_000680.2.

Please note the [peptide](#) is available for sale.

Purification and Storage

Purified from goat serum by ammonium sulphate precipitation followed by antigen affinity chromatography using the immunizing peptide.

Supplied at 0.5 mg/ml in Tris saline, 0.02% sodium azide, pH7.3 with 0.5% bovine serum albumin.

Aliquot and store at -20°C. Minimize freezing and thawing.

Applications Tested

Peptide ELISA: antibody detection limit dilution 1:32000.

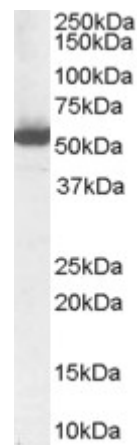
Western blot: Approx 55kDa band observed in Human Liver lysates (calculated MW of 54.9kDa according to NP_000680.2). Recommended concentration: 1-3µg/ml.

IHC: Paraffin embedded Human Testis. Recommended concentration: 5µg/ml.

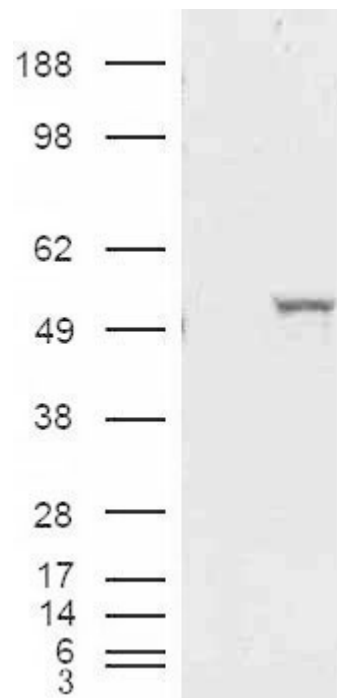
Species Reactivity

Tested: Human

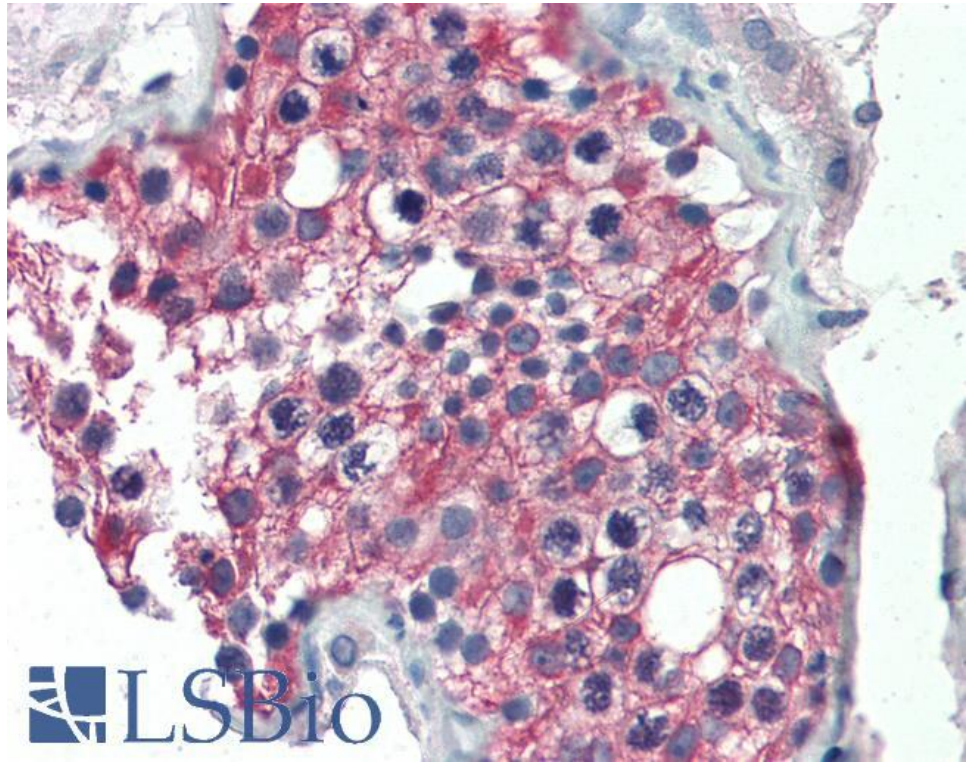
Expected from sequence similarity: Human, Mouse, Rat



EB07138 (1 μ g/ml) staining of Human Liver Lysate (35 μ g protein in RIPA buffer). Primary incubation was 1 hour.
Detected by chemiluminescence.



HEK293 overexpressing ALDH1A1 and probed with EB07138 (mock transfection in first lane).



EB07138 (5µg/ml) staining of paraffin embedded Human Testis. Steamed antigen retrieval with citrate buffer pH 6, AP-staining.