

UK Office

Everest Biotech Ltd

Cherwell Innovation Centre
77 Heyford Park
Upper Heyford
Oxfordshire
OX25 5HD
UK

Enquiries:

info@everestbiotech.com

Sales:

sales@everestbiotech.com

Tech support:

support@everestbiotech.com

Tel: +44 (0)1869 238326

www.everestbiotech.com

**Research Use Only. Not for
diagnostic or therapeutic use.**

EB10119 - Goat Anti-ALDH3A1 Antibody

Size: 100µg specific antibody in 200µl



Target Protein

Principal Names: aldehyde dehydrogenase 3 family, member A1, aldehyde dehydrogenase 3A1, aldehyde dehydrogenase isozyme 3, aldehyde dehydrogenase type III, aldehyde dehydrogenase, dimeric NADP-preferring, ALDH3, ALDHIII, MGC10406, stomach aldehyde dehydrogenase, ALDH3A1

Official Symbol: ALDH3A1

Accession Number(s): NP_000682.3

Human GeneID(s): [218](#)

Important Comments: Reported variants represent identical protein: NP_001128639.1, NP_000682.3, NP_001128640.1

Immunogen

Peptide with sequence C-RYPPSPAKMTQH, from the C Terminus of the protein sequence according to NP_000682.3.

Please note the [peptide](#) is available for sale.

Purification and Storage

Purified from goat serum by ammonium sulphate precipitation followed by antigen affinity chromatography using the immunizing peptide.

Supplied at 0.5 mg/ml in Tris saline, 0.02% sodium azide, pH7.3 with 0.5% bovine serum albumin.

Aliquot and store at -20°C. Minimize freezing and thawing.

Applications Tested

Peptide ELISA: antibody detection limit dilution 1:32000.

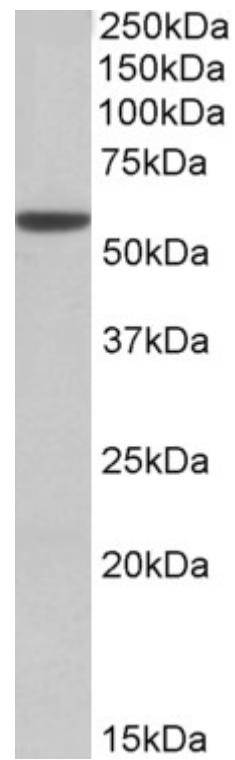
Western blot: Approx 55kDa band observed in Mouse Eye lysates (calculated MW of 50.5kDa according to Mouse NP_031462.2). Recommended concentration: 0.01-0.03µg/ml.

IHC: In paraffin embedded Human Lung shows strong staining of the respiratory epithelium of the tracheal wall. Recommended concentration, 3-5µg/ml.

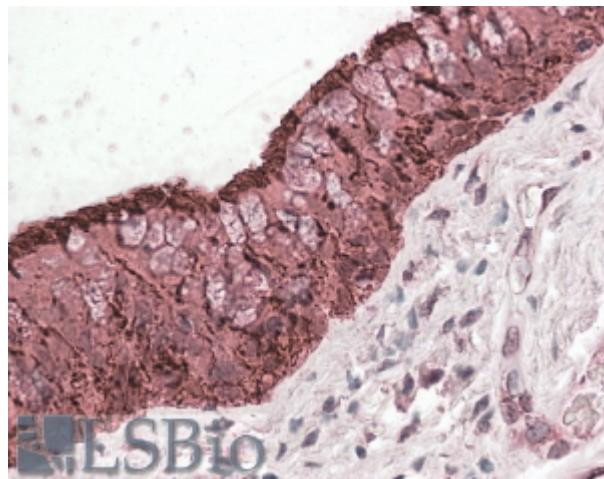
Species Reactivity

Tested: Human, Mouse

Expected from sequence similarity: Human, Mouse



EB10119 (0.01 μ g/ml) staining of Mouse Eye lysate (35 μ g protein in RIPA buffer). Primary incubation was 1 hour. Detected by chemiluminescence.



EB10119 (3.8 μ g/ml) staining of paraffin embedded Human Lung. Steamed antigen retrieval with citrate buffer pH 6, AP-staining.