



## UK Office

### Everest Biotech Ltd

Cherwell Innovation Centre  
77 Heyford Park  
Upper Heyford  
Oxfordshire  
OX25 5HD  
UK

Enquiries:

[info@everestbiotech.com](mailto:info@everestbiotech.com)

Sales:

[sales@everestbiotech.com](mailto:sales@everestbiotech.com)

Tech support:

[support@everestbiotech.com](mailto:support@everestbiotech.com)

Tel: +44 (0)1869 238326

Fax: +44 (0)1869 238327

## US Office

### Everest Biotech c/o Abcore

405 Maple Street, Suite A106  
Ramona,  
CA 92065  
USA

Inquiries:

[info@everestbiotech.com](mailto:info@everestbiotech.com)

Sales:

[usasales@everestbiotech.com](mailto:usasales@everestbiotech.com)

Tech support:

[support@everestbiotech.com](mailto:support@everestbiotech.com)

Tel: 888-320-4628 (toll-free)

Fax: 888-841-9041

[www.everestbiotech.com](http://www.everestbiotech.com)

**Research Use Only. Not for  
diagnostic or therapeutic use.**

## EB10119 - Goat Anti-ALDH3A1 Antibody

Size: 100µg specific antibody in 200µl



### Target Protein

**Principal Names:** aldehyde dehydrogenase 3 family, member A1, aldehyde dehydrogenase 3A1, aldehyde dehydrogenase isozyme 3, aldehyde dehydrogenase type III, aldehyde dehydrogenase, dimeric NADP-preferring, ALDH3, ALDHIII, MGC10406, stomach aldehyde dehydrogenase, ALDH3A1

**Official Symbol:** ALDH3A1

**Accession Number(s):** NP\_000682.3

**Human GeneID(s):** [218](#)

**Important Comments:** Reported variants represent identical protein: NP\_001128639.1, NP\_000682.3, NP\_001128640.1

### Immunogen

Peptide with sequence C-RYPPSPAKMTQH, from the C Terminus of the protein sequence according to NP\_000682.3.

Please note the [peptide](#) is available for sale.

### Purification and Storage

Purified from goat serum by ammonium sulphate precipitation followed by antigen affinity chromatography using the immunizing peptide.

Supplied at 0.5 mg/ml in Tris saline, 0.02% sodium azide, pH7.3 with 0.5% bovine serum albumin.

Aliquot and store at -20°C. Minimize freezing and thawing.

### Applications Tested

**Peptide ELISA:** antibody detection limit dilution 1:32000.

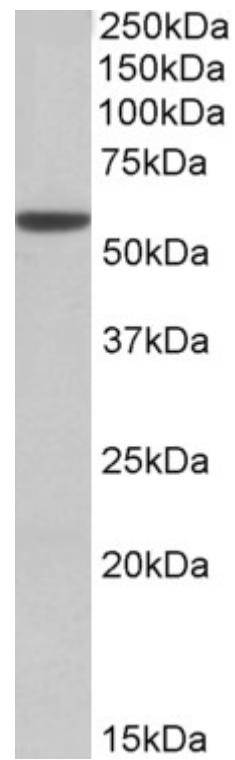
**Western blot:** Approx 55kDa band observed in Mouse Eye lysates (calculated MW of 50.5kDa according to Mouse NP\_031462.2). Recommended concentration: 0.01-0.03µg/ml.

**IHC:** In paraffin embedded Human Lung shows strong staining of the respiratory epithelium of the tracheal wall. Recommended concentration, 3-5µg/ml.

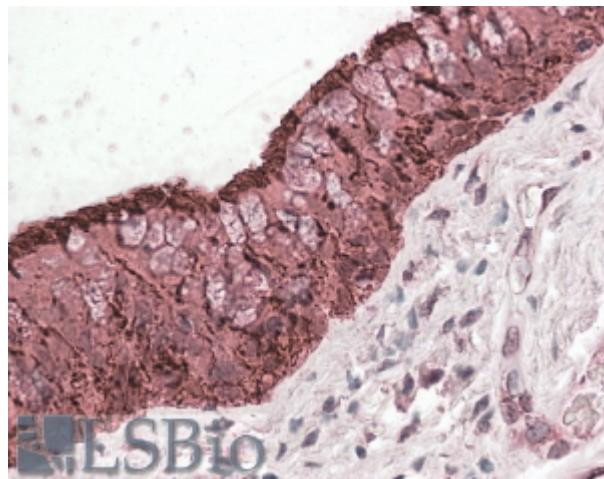
### Species Reactivity

**Tested:** Human, Mouse

**Expected from sequence similarity:** Human, Mouse



EB10119 (0.01 $\mu$ g/ml) staining of Mouse Eye lysate (35 $\mu$ g protein in RIPA buffer). Primary incubation was 1 hour. Detected by chemiluminescence.



EB10119 (3.8 $\mu$ g/ml) staining of paraffin embedded Human Lung. Steamed antigen retrieval with citrate buffer pH 6, AP-staining.