



UK Office

Everest Biotech Ltd

Cherwell Innovation Centre
77 Heyford Park
Upper Heyford
Oxfordshire
OX25 5HD
UK

Enquiries:

info@everestbiotech.com

Sales:

sales@everestbiotech.com

Tech support:

support@everestbiotech.com

Tel: +44 (0)1869 238326

Fax: +44 (0)1869 238327

US Office

Everest Biotech c/o Abcore

405 Maple Street, Suite A106
Ramona,
CA 92065
USA

Inquiries:

info@everestbiotech.com

Sales:

usasales@everestbiotech.com

Tech support:

support@everestbiotech.com

Tel: 888-320-4628 (toll-free)

Fax: 888-841-9041

www.everestbiotech.com

**Research Use Only. Not for
diagnostic or therapeutic use.**

EB10132 - Goat Anti-ALDH3A2 Antibody

Size: 100µg specific antibody in 200µl



Target Protein

Principal Names: alcohol dehydrogenase family 3, subfamily A2, aldehyde dehydrogenase 3 family, member A2, aldehyde dehydrogenase 3A2, aldehyde dehydrogenase 4, aldehyde dehydrogenase family 3 member A2, aldehyde dehydrogenase family 3, subfamily A2, Aldh4, FALDH, Aldh3a2

Official Symbol: Aldh3a2

Accession Number(s): NP_113919.2

Non-Human GeneID(s): 11671 (mouse), 65183 (rat)

Important Comments: This antibody is expected to recognize both reported isoforms (NP_001026976.1; NP_000373.1).

Immunogen

Peptide with sequence C-KGLKGESVNLRY, from the internal region of the protein sequence according to NP_113919.2.

Please note the [peptide](#) is available for sale.

Purification and Storage

Purified from goat serum by ammonium sulphate precipitation followed by antigen affinity chromatography using the immunizing peptide.

Supplied at 0.5 mg/ml in Tris saline, 0.02% sodium azide, pH7.3 with 0.5% bovine serum albumin.

Aliquot and store at -20°C. Minimize freezing and thawing.

Applications Tested

Peptide ELISA: antibody detection limit dilution 1:32000.

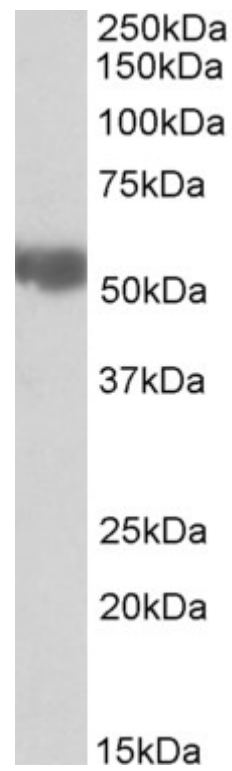
Western blot: Approx 55kDa band observed in Rat Liver lysates (calculated MW of 54.1kDa according to Rat NP_113919.2). Recommended concentration: 0.03-0.1µg/ml. Primary incubation was 1 hour.

IHC: Paraffin embedded Human Adrenal Gland. Recommended concentration: 5µg/ml.

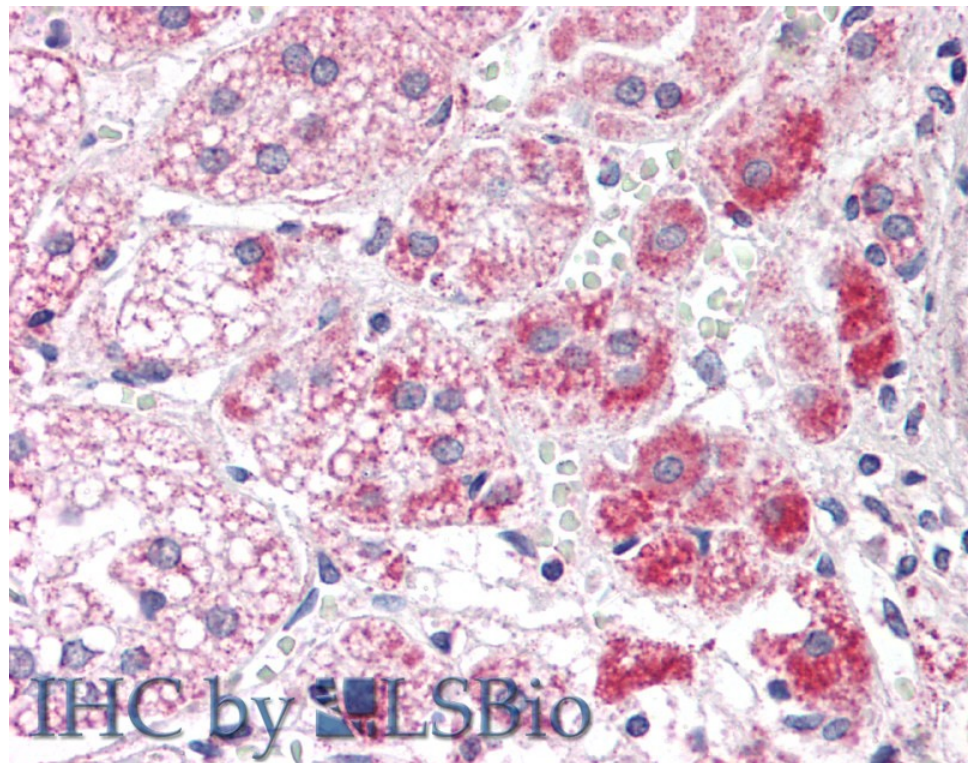
Species Reactivity

Tested: Human, Rat

Expected from sequence similarity: Mouse, Rat



EB10132 (0.03 μ g/ml) staining of Rat Liver lysate (35 μ g protein in RIPA buffer). Detected by chemiluminescence.



EB10132 (5 μ g/ml) staining of paraffin embedded Human Adrenal Gland. Steamed antigen retrieval with citrate buffer pH 6, AP-staining.