

UK Office

Everest Biotech Ltd

Cherwell Innovation Centre
77 Heyford Park
Upper Heyford
Oxfordshire
OX25 5HD
UK

Enquiries:

info@everestbiotech.com

Sales:

sales@everestbiotech.com

Tech support:

support@everestbiotech.com

Tel: +44 (0)1869 238326

www.everestbiotech.com

**Research Use Only. Not for
diagnostic or therapeutic use.**

EB10125 - Goat Anti-ALDH3B1 Antibody

Size: 100µg specific antibody in 200µl



Target Protein

Principal Names: aldehyde dehydrogenase 3 family, member B1, aldehyde dehydrogenase 3B1, aldehyde dehydrogenase 7, ALDH4, ALDH7, FLJ26433, FLJ34710, ALDH3B1

Official Symbol: ALDH3B1

Accession Number(s): NP_000685.1

Human GeneID(s): [221](#)

Important Comments: This antibody is expected to recognize isoform a (NP_000685.1) only. This antibody is not expected to cross react with ALDH3B2. Reported variants represent identical protein: NP_000685.1, NP_001154945.1

Immunogen

Peptide with sequence C-QDLHKSAFESEVSE, from the internal region of the protein sequence according to NP_000685.1.

Please note the [peptide](#) is available for sale.

Purification and Storage

Purified from goat serum by ammonium sulphate precipitation followed by antigen affinity chromatography using the immunizing peptide.

Supplied at 0.5 mg/ml in Tris saline, 0.02% sodium azide, pH7.3 with 0.5% bovine serum albumin.

Aliquot and store at -20°C. Minimize freezing and thawing.

Applications Tested

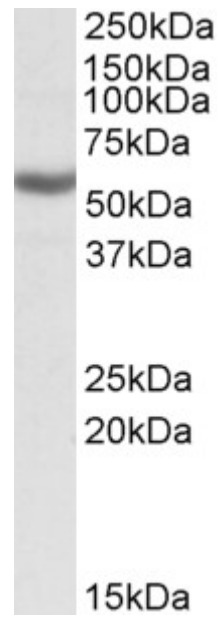
Peptide ELISA: antibody detection limit dilution 1:16000.

Western blot: Approx 55kDa band observed in Human Peripheral Blood Mononucleocytes and in lysates of cell line K562 (calculated MW of 51.8kDa according to NP_000685.1). Recommended concentration: 0.3-1µg/ml.

Species Reactivity

Tested: Human

Expected from sequence similarity: Human, Mouse, Rat, Dog, Cow



EB10125 (0.3 μ g/ml) staining of K562 lysate (35 μ g protein in RIPA buffer). Primary incubation was 1 hour.
Detected by chemiluminescence.