



UK Office

Everest Biotech Ltd

Cherwell Innovation Centre
77 Heyford Park
Upper Heyford
Oxfordshire
OX25 5HD
UK

Enquiries:

info@everestbiotech.com

Sales:

sales@everestbiotech.com

Tech support:

support@everestbiotech.com

Tel: +44 (0)1869 238326

Fax: +44 (0)1869 238327

US Office

Everest Biotech c/o Abcore

405 Maple Street, Suite A106
Ramona,
CA 92065
USA

Inquiries:

info@everestbiotech.com

Sales:

usasales@everestbiotech.com

Tech support:

support@everestbiotech.com

Tel: 888-320-4628 (toll-free)

Fax: 888-841-9041

www.everestbiotech.com

**Research Use Only. Not for
diagnostic or therapeutic use.**

EB10436 - Goat Anti-ALDH5A1 (aa 301-312) Antibody

Size: 100µg specific antibody in 200µl



Target Protein

Principal Names: aldehyde dehydrogenase 5 family, member A1, aldehyde dehydrogenase 5A1, mitochondrial succinate semialdehyde dehydrogenase, NAD(+)-dependent succinic semialdehyde dehydrogenase, SSADH, SSDH, succinate-semialdehyde dehydrogenase, ALDH5A1

Official Symbol: ALDH5A1

Accession Number(s): NP_733936.1; NP_001071.1

Human GeneID(s): [7915](#)

Non-Human GeneID(s): 214579 (mouse), 291133 (rat)

Important Comments: This antibody is expected to recognize both reported isoforms (NP_733936.1; NP_001071.1). Amino acid numbering in name calculated from NP_733936.1.

Immunogen

Peptide with sequence C-TGKILLHHAANS, from the internal region of the protein sequence according to NP_733936.1; NP_001071.1.

Please note the [peptide](#) is available for sale.

Purification and Storage

Purified from goat serum by ammonium sulphate precipitation followed by antigen affinity chromatography using the immunizing peptide.

Supplied at 0.5 mg/ml in Tris saline, 0.02% sodium azide, pH7.3 with 0.5% bovine serum albumin.

Aliquot and store at -20°C. Minimize freezing and thawing.

Applications Tested

Peptide ELISA: antibody detection limit dilution 1:16000.

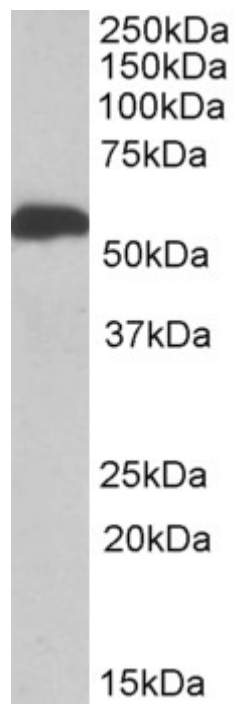
Western blot: Approx 55kDa band observed in Human Liver lysates (calculated MW of 58.7kDa according to NP_733936.1). Recommended concentration: 1-3µg/ml. Please note that both this product and EB10435 detects a 50kDa in Mouse and Rat Liver lysates (calculated MW of 56.0kDa according to Mouse NP_766120.1). Primary incubation was 1 hour.

IHC: Paraffin embedded Human Liver. Recommended concentration: 5µg/ml.

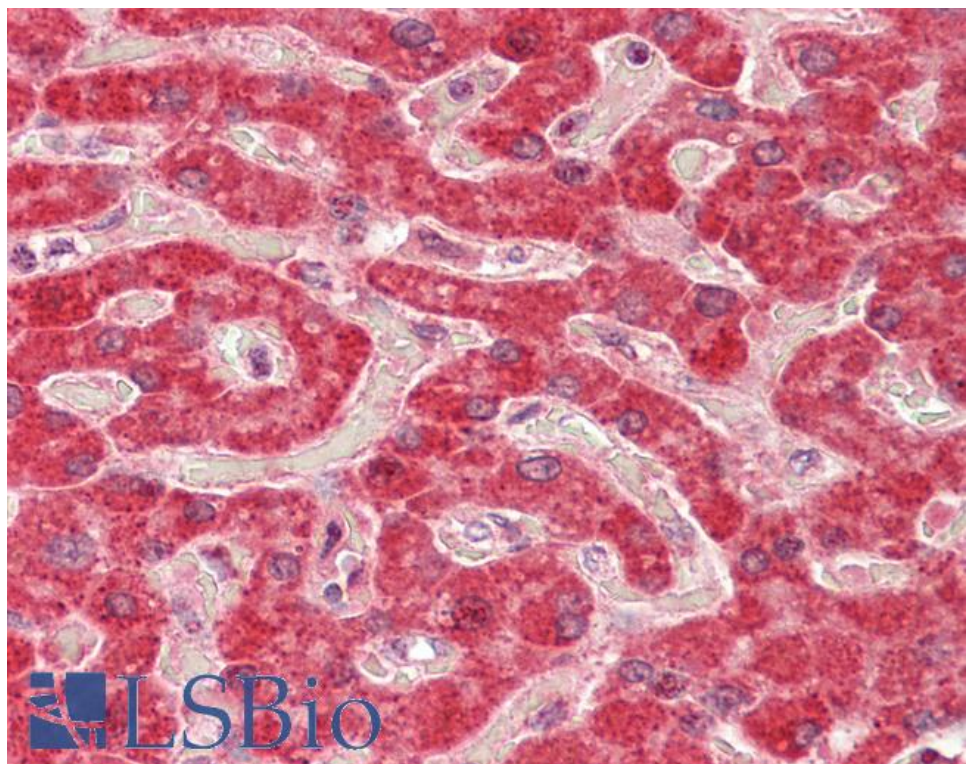
Species Reactivity

Tested: Human, Mouse, Rat

Expected from sequence similarity: Human, Mouse, Rat, Dog, Cow



EB10436 (1µg/ml) staining of Human Liver lysate (35µg protein in RIPA buffer). Detected by chemiluminescence.



EB10436 (5µg/ml) staining of paraffin embedded Human Liver. Steamed antigen retrieval with citrate buffer pH 6, AP-staining.