

UK Office

Everest Biotech Ltd

Cherwell Innovation Centre
77 Heyford Park
Upper Heyford
Oxfordshire
OX25 5HD
UK

Enquiries:

info@everestbiotech.com

Sales:

sales@everestbiotech.com

Tech support:

support@everestbiotech.com

Tel: +44 (0)1869 238326

www.everestbiotech.com

**Research Use Only. Not for
diagnostic or therapeutic use.**

EB10438 - Goat Anti-ALDH6A1 (aa262-272) Antibody

Size: 100µg specific antibody in 200µl



Target Protein

Principal Names: aldehyde dehydrogenase 6 family, member A1, aldehyde dehydrogenase 6A1, MGC40271, mitochondrial acylating methylmalonate-semialdehyde dehydrogenase, MMSADHA, MMSDH, ALDH6A1

Official Symbol: ALDH6A1

Accession Number(s): NP_005580.1

Human GeneID(s): [4329](#)

Non-Human GeneID(s): 104776 (mouse), 81708 (rat)

Immunogen

Peptide with sequence C-SNKAGEYIFER, from the internal region of the protein sequence according to NP_005580.1.

Please note the [peptide](#) is available for sale.

Purification and Storage

Purified from goat serum by ammonium sulphate precipitation followed by antigen affinity chromatography using the immunizing peptide.

Supplied at 0.5 mg/ml in Tris saline, 0.02% sodium azide, pH7.3 with 0.5% bovine serum albumin.

Aliquot and store at -20°C. Minimize freezing and thawing.

Applications Tested

Peptide ELISA: antibody detection limit dilution 1:32000.

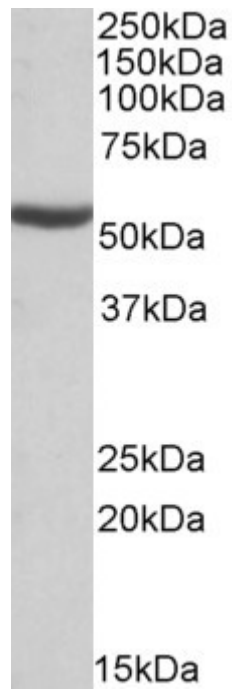
Western blot: Approx 55kDa band observed in Human and Mouse Kidney lysates (calculated MW of 57.8kDa according to NP_005580.1). Recommended concentration: 0.1-0.3µg/ml.

IHC: Paraffin embedded Human Liver. Recommended concentration: 5µg/ml.

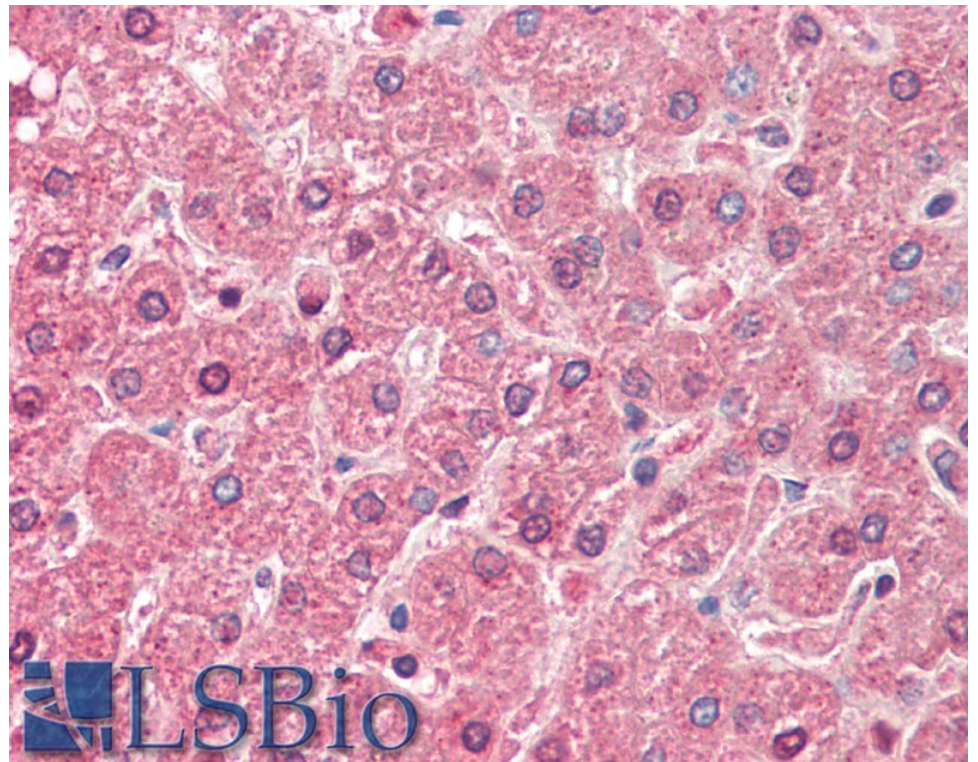
Species Reactivity

Tested: Human, Mouse

Expected from sequence similarity: Human, Mouse, Rat, Dog, Cow, Pig



EB10438 (0.1 μ g/ml) staining of Mouse Kidney lysate (35 μ g protein in RIPA buffer). Primary incubation was 1 hour. Detected by chemiluminescence.



EB10438 (5 μ g/ml) staining of paraffin embedded Human Liver. Steamed antigen retrieval with citrate buffer pH 6, AP-staining.