



## UK Office

### Everest Biotech Ltd

Cherwell Innovation Centre  
77 Heyford Park  
Upper Heyford  
Oxfordshire  
OX25 5HD  
UK

Enquiries:

[info@everestbiotech.com](mailto:info@everestbiotech.com)

Sales:

[sales@everestbiotech.com](mailto:sales@everestbiotech.com)

Tech support:

[support@everestbiotech.com](mailto:support@everestbiotech.com)

Tel: +44 (0)1869 238326

Fax: +44 (0)1869 238327

## US Office

### Everest Biotech c/o Abcore

405 Maple Street, Suite A106  
Ramona,  
CA 92065  
USA

Inquiries:

[info@everestbiotech.com](mailto:info@everestbiotech.com)

Sales:

[usasales@everestbiotech.com](mailto:usasales@everestbiotech.com)

Tech support:

[support@everestbiotech.com](mailto:support@everestbiotech.com)

Tel: 888-320-4628 (toll-free)

Fax: 888-841-9041

[www.everestbiotech.com](http://www.everestbiotech.com)

**Research Use Only. Not for  
diagnostic or therapeutic use.**

## EB10437-B - Goat Anti-ALDH6A1 (aa487-496), Biotinylated Antibody

Size: 100µg specific antibody in 200µl



### Target Protein

**Principal Names:** ALDH6A1, aldehyde dehydrogenase 6 family member A1, MMSADHA, MMSDH, aldehyde dehydrogenase 6 family, member A1, malonate-semialdehyde dehydrogenase, mitochondrial acylating methylmalonate-semialdehyde dehydrogenase, testicular tissue protein Li 122

**Official Symbol:** ALDH6A1

**Accession Number(s):** NP\_005580.1; NP\_001265522.1; NP\_001265523.1

**Human GeneID(s):** [4329](#)

**Non-Human GeneID(s):** 104776 (mouse), 81708 (rat)

**Important Comments:** This antibody is expected to recognize all three reported isoform (NP\_005580.1; NP\_001265522.1; NP\_001265523.1).

### Immunogen

Peptide with sequence C-SRSSFRGDTN., from the internal region of the protein sequence according to NP\_005580.1; NP\_001265522.1; NP\_001265523.1.

Please note the [peptide](#) is available for sale.

### Purification and Storage

Purified from goat serum by ammonium sulphate precipitation followed by antigen affinity chromatography using the immunizing peptide.

Supplied at 0.5 mg/ml in Tris saline, 0.02% sodium azide, pH7.3 with 0.5% bovine serum albumin.

Aliquot and store at -20°C. Minimize freezing and thawing.

### Applications Tested

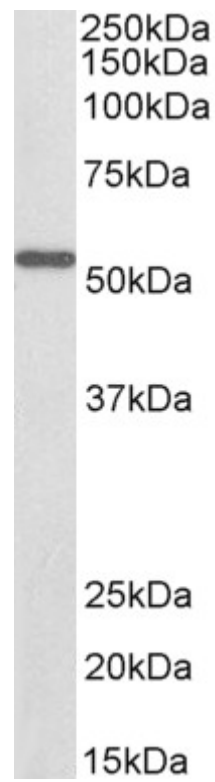
**Peptide ELISA:** antibody detection limit dilution 1:32000.

**Western blot:** Approx 55kDa band observed in Mouse Kidney lysates (calculated MW of 57.9kDa according to Mouse NP\_598803.1). See non-biotinylated parental product's datasheet for further QC data. Recommended concentration: 0.1-0.3µg/ml.

### Species Reactivity

**Tested:** Human, Mouse, Rat

**Expected from sequence similarity:** Human, Mouse, Rat, Dog, Cow, Pig



Biotinylated EB10437 (0.1µg/ml) staining of Mouse Kidney lysate (35µg protein in RIPA buffer), exactly mirroring its parental non-biotinylated product. Primary incubation was 1 hour. Detected by chemiluminescence, using streptavidin-HRP and using NAP blocker as a substitute for skimmed milk.