



## UK Office

### Everest Biotech Ltd

Cherwell Innovation Centre  
77 Heyford Park  
Upper Heyford  
Oxfordshire  
OX25 5HD  
UK

Enquiries:

[info@everestbiotech.com](mailto:info@everestbiotech.com)

Sales:

[sales@everestbiotech.com](mailto:sales@everestbiotech.com)

Tech support:

[support@everestbiotech.com](mailto:support@everestbiotech.com)

Tel: +44 (0)1869 238326

[www.everestbiotech.com](http://www.everestbiotech.com)

**Research Use Only. Not for  
diagnostic or therapeutic use.**

## EB10130 - Goat Anti-ALDH9A1 Antibody

Size: 100µg specific antibody in 200µl



### Target Protein

**Principal Names:** 4-trimethylaminobutyraldehyde dehydrogenase, aldehyde dehydrogenase (NAD<sup>+</sup>), aldehyde dehydrogenase 9 family, member A1, aldehyde dehydrogenase 9A1, aldehyde dehydrogenase E3 is, ALDH4, ALDH7, ALDH9, E3, R-aminobutyraldehyde dehydrogenase, TMABADH, ALDH9A1

**Official Symbol:** ALDH9A1

**Accession Number(s):** NP\_000687.3

**Human GeneID(s):** [223](#)

### Immunogen

Peptide with sequence C-QKEILDKFTEEVVKQ, from the internal region of the protein sequence according to NP\_000687.3.

Please note the [peptide](#) is available for sale.

### Purification and Storage

Purified from goat serum by ammonium sulphate precipitation followed by antigen affinity chromatography using the immunizing peptide.

Supplied at 0.5 mg/ml in Tris saline, 0.02% sodium azide, pH7.3 with 0.5% bovine serum albumin.

Aliquot and store at -20°C. Minimize freezing and thawing.

### Applications Tested

**Peptide ELISA:** antibody detection limit dilution 1:16000.

**Western blot:** Approx 50kDa band observed in Human Kidney and Liver lysates (calculated MW of 56.3kDa according to NP\_000687.3). Recommended concentration: 0.3-1µg/ml.

**IHC:** In paraffin embedded Human Cerebellum shows staining of a few cells between the Granular Cell layer and the Molecular Layer of the Cerebellum. Please note the unstained Purkinje cell at 10 O'clock. Recommended concentration, 3-5µg/ml.

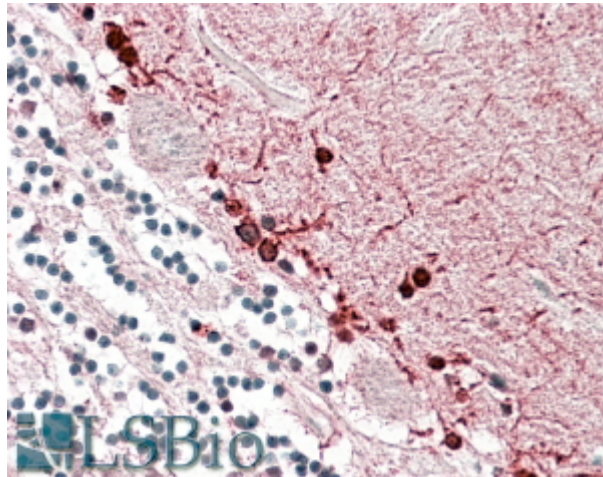
### Species Reactivity

**Tested:** Human

**Expected from sequence similarity:** Human, Cow



EB10130 (0.3 $\mu$ g/ml) staining of Human Kidney lysate (35 $\mu$ g protein in RIPA buffer). Primary incubation was 1 hour. Detected by chemiluminescence.



EB10130 (3.8 $\mu$ g/ml) staining of paraffin embedded Human Cerebellum. Steamed antigen retrieval with citrate buffer pH 6, AP-staining.