



UK Office

Everest Biotech Ltd

Cherwell Innovation Centre
77 Heyford Park
Upper Heyford
Oxfordshire
OX25 5HD
UK

Enquiries:

info@everestbiotech.com

Sales:

sales@everestbiotech.com

Tech support:

support@everestbiotech.com

Tel: +44 (0)1869 238326

Fax: +44 (0)1869 238327

US Office

Everest Biotech c/o Abcore

405 Maple Street, Suite A106
Ramona,
CA 92065
USA

Inquiries:

info@everestbiotech.com

Sales:

usasales@everestbiotech.com

Tech support:

support@everestbiotech.com

Tel: 888-320-4628 (toll-free)

Fax: 888-841-9041

www.everestbiotech.com

**Research Use Only. Not for
diagnostic or therapeutic use.**

EB10130 - Goat Anti-ALDH9A1 Antibody

Size: 100µg specific antibody in 200µl



Target Protein

Principal Names: 4-trimethylaminobutyraldehyde dehydrogenase, aldehyde dehydrogenase (NAD⁺), aldehyde dehydrogenase 9 family, member A1, aldehyde dehydrogenase 9A1, aldehyde dehydrogenase E3 is, ALDH4, ALDH7, ALDH9, E3, R-aminobutyraldehyde dehydrogenase, TMABADH, ALDH9A1

Official Symbol: ALDH9A1

Accession Number(s): NP_000687.3

Human GeneID(s): [223](#)

Immunogen

Peptide with sequence C-QKEILDKFTEEVVKQ, from the internal region of the protein sequence according to NP_000687.3.

Please note the [peptide](#) is available for sale.

Purification and Storage

Purified from goat serum by ammonium sulphate precipitation followed by antigen affinity chromatography using the immunizing peptide.

Supplied at 0.5 mg/ml in Tris saline, 0.02% sodium azide, pH7.3 with 0.5% bovine serum albumin.

Aliquot and store at -20°C. Minimize freezing and thawing.

Applications Tested

Peptide ELISA: antibody detection limit dilution 1:16000.

Western blot: Approx 50kDa band observed in Human Kidney and Liver lysates (calculated MW of 56.3kDa according to NP_000687.3). Recommended concentration: 0.3-1µg/ml.

IHC: In paraffin embedded Human Cerebellum shows staining of a few cells between the Granular Cell layer and the Molecular Layer of the Cerebellum. Please note the unstained Purkinje cell at 10 O'clock. Recommended concentration, 3-5µg/ml.

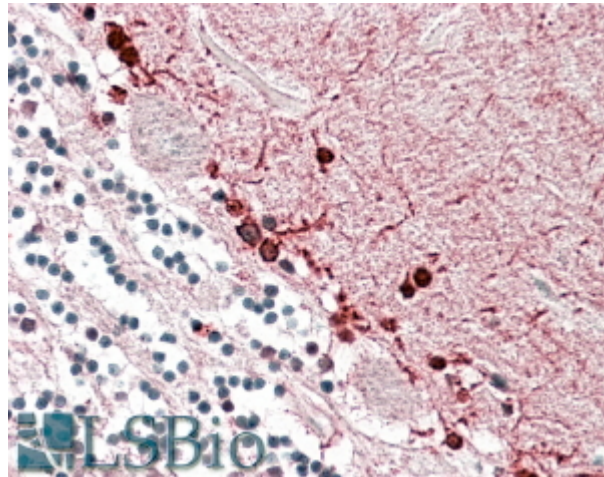
Species Reactivity

Tested: Human

Expected from sequence similarity: Human, Cow



EB10130 (0.3 μ g/ml) staining of Human Kidney lysate (35 μ g protein in RIPA buffer). Primary incubation was 1 hour. Detected by chemiluminescence.



EB10130 (3.8 μ g/ml) staining of paraffin embedded Human Cerebellum. Steamed antigen retrieval with citrate buffer pH 6, AP-staining.