



## UK Office

### Everest Biotech Ltd

Cherwell Innovation Centre  
77 Heyford Park  
Upper Heyford  
Oxfordshire  
OX25 5HD  
UK

Enquiries:

[info@everestbiotech.com](mailto:info@everestbiotech.com)

Sales:

[sales@everestbiotech.com](mailto:sales@everestbiotech.com)

Tech support:

[support@everestbiotech.com](mailto:support@everestbiotech.com)

Tel: +44 (0)1869 238326

[www.everestbiotech.com](http://www.everestbiotech.com)

**Research Use Only. Not for  
diagnostic or therapeutic use.**

## EB12392 - Goat Anti-ALDOA (aa86-96) Antibody

Size: 100µg specific antibody in 200µl



### Target Protein

**Principal Names:** ALDOA, aldolase A, fructose-bisphosphate, ALDA, GSD12, fructose-1,6-bisphosphate triosephosphate-lyase, fructose-bisphosphate aldolase A, lung cancer antigen NY-LU-1, muscle-type aldolase

**Official Symbol:** ALDOA

**Accession Number(s):** NP\_000025.1; NP\_001230106.1

**Human GeneID(s):** [226](#)

**Non-Human GeneID(s):** 11674 (mouse), 24189 (rat)

**Important Comments:** This antibody is expected to recognize both reported isoforms (P\_000025.1; NP\_001230106.1). Reported variants represent identical protein: NP\_908930.1, NP\_908932.1, NP\_001121089.1, NP\_000025.1.

### Immunogen

Peptide with sequence C-QKADDGRFPFQ, from the internal region of the protein sequence according to NP\_000025.1; NP\_001230106.1.

Please note the [peptide](#) is available for sale.

### Purification and Storage

Purified from goat serum by ammonium sulphate precipitation followed by antigen affinity chromatography using the immunizing peptide.

Supplied at 0.5 mg/ml in Tris saline, 0.02% sodium azide, pH7.3 with 0.5% bovine serum albumin.

Aliquot and store at -20°C. Minimize freezing and thawing.

### Applications Tested

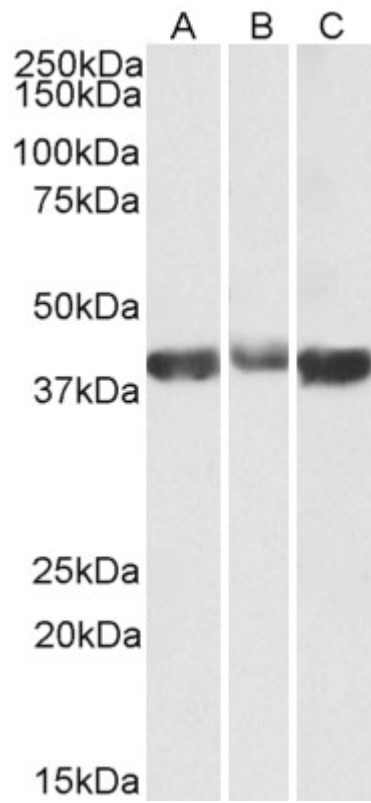
**Peptide ELISA:** antibody detection limit dilution 1:128000.

**Western blot:** Approx 39kDa band observed in Human, Mouse and Rat Skeletal Muscle lysates (calculated MW of 39.4kDa according to NP\_000025.1). Recommended concentration: 0.03-0.1µg/ml.

### Species Reactivity

**Tested:** Human, Mouse, Rat

**Expected from sequence similarity:** Human, Mouse, Rat, Cow



EB12392 (0.03 $\mu$ g/ml) staining of Human (A), Mouse (B) and Rat (C) Skeletal Muscle lysates (35 $\mu$ g protein in RIPA buffer). Primary incubation was 1 hour. Detected by chemiluminescence.