



## UK Office

### Everest Biotech Ltd

Cherwell Innovation Centre  
77 Heyford Park  
Upper Heyford  
Oxfordshire  
OX25 5HD  
UK

Enquiries:

[info@everestbiotech.com](mailto:info@everestbiotech.com)

Sales:

[sales@everestbiotech.com](mailto:sales@everestbiotech.com)

Tech support:

[support@everestbiotech.com](mailto:support@everestbiotech.com)

Tel: +44 (0)1869 238326

[www.everestbiotech.com](http://www.everestbiotech.com)

**Research Use Only. Not for  
diagnostic or therapeutic use.**

## EB12545 - Goat Anti-Alfy / WDFY3 Antibody

Size: 100µg specific antibody in 200µl



### Target Protein

**Principal Names:** WDFY3, WD repeat and FYVE domain containing 3, ALFY, ZFYVE25, WD repeat and FYVE domain-containing protein 3, autophagy-linked FYVE protein

**Official Symbol:** WDFY3

**Accession Number(s):** NP\_055806.2

**Human GeneID(s):** [23001](#)

**Non-Human GeneID(s):** 72145 (mouse), 305164 (rat)

### Immunogen

Peptide with sequence C-SPERSTRTQQKEFQT, from the internal region of the protein sequence according to NP\_055806.2.

Please note the [peptide](#) is available for sale.

### Purification and Storage

Purified from goat serum by ammonium sulphate precipitation followed by antigen affinity chromatography using the immunizing peptide.

Supplied at 0.5 mg/ml in Tris saline, 0.02% sodium azide, pH7.3 with 0.5% bovine serum albumin.

Aliquot and store at -20°C. Minimize freezing and thawing.

### Applications Tested

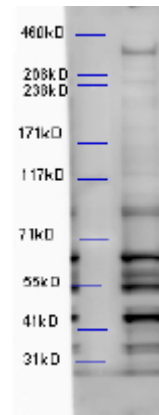
**Peptide ELISA:** antibody detection limit dilution 1:128000.

**Western blot:** Approx 400kDa band observed in Mouse Brain lysates (calculated MW of 395kDa according to NP\_055806.2). Data obtained from anonymous customer. The lower molecular weight bands are non-specific. We call for caution when used for other assays than Western blot. Recommended concentration: 4-6µg/ml.

### Species Reactivity

**Tested:** Mouse

**Expected from sequence similarity:** Human, Mouse, Rat, Cow



EB12545 (5µg/ml) staining of Mouse Brain lysate (35µg protein in RIPA buffer). Primary incubation was 1 hour.  
Detected by chemiluminescence.