



## UK Office

### Everest Biotech Ltd

Cherwell Innovation Centre  
77 Heyford Park  
Upper Heyford  
Oxfordshire  
OX25 5HD  
UK

Enquiries:

[info@everestbiotech.com](mailto:info@everestbiotech.com)

Sales:

[sales@everestbiotech.com](mailto:sales@everestbiotech.com)

Tech support:

[support@everestbiotech.com](mailto:support@everestbiotech.com)

Tel: +44 (0)1869 238326

Fax: +44 (0)1869 238327

## US Office

### Everest Biotech c/o Abcore

405 Maple Street, Suite A106  
Ramona,  
CA 92065  
USA

Inquiries:

[info@everestbiotech.com](mailto:info@everestbiotech.com)

Sales:

[usasales@everestbiotech.com](mailto:usasales@everestbiotech.com)

Tech support:

[support@everestbiotech.com](mailto:support@everestbiotech.com)

Tel: 888-320-4628 (toll-free)

Fax: 888-841-9041

[www.everestbiotech.com](http://www.everestbiotech.com)

**Research Use Only. Not for  
diagnostic or therapeutic use.**

## EB09049 - Goat Anti-ALOX15 Antibody

Size: 100µg specific antibody in 200µl



## Target Protein

**Principal Names:** ALOX15, arachidonate 15-lipoxygenase, 15-LOX-1, 15-LOX2

**Official Symbol:** ALOX15

**Accession Number(s):** NP\_001131.3

**Human GeneID(s):** [246](#)

## Immunogen

Peptide with sequence C-HYKTDVAVKDDPE, from the internal region of the protein sequence according to NP\_001131.3.

Please note the [peptide](#) is available for sale.

## Purification and Storage

Purified from goat serum by ammonium sulphate precipitation followed by antigen affinity chromatography using the immunizing peptide.

Supplied at 0.5 mg/ml in Tris saline, 0.02% sodium azide, pH7.3 with 0.5% bovine serum albumin.

Aliquot and store at -20°C. Minimize freezing and thawing.

## Applications Tested

**Peptide ELISA:** antibody detection limit dilution 1:32000.

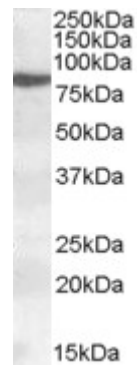
**Western blot:** Approx. 80kDa band observed in nuclear lysates of cell line HeLa (calculated MW of 74.8kDa according to NP\_001131.3). Recommended concentration: 0.2-0.5µg/ml. Primary incubation was 1 hour.

**IHC:** Paraffin embedded Human Skeletal Muscle and Kidney. Recommended concentration: 2µg/ml.

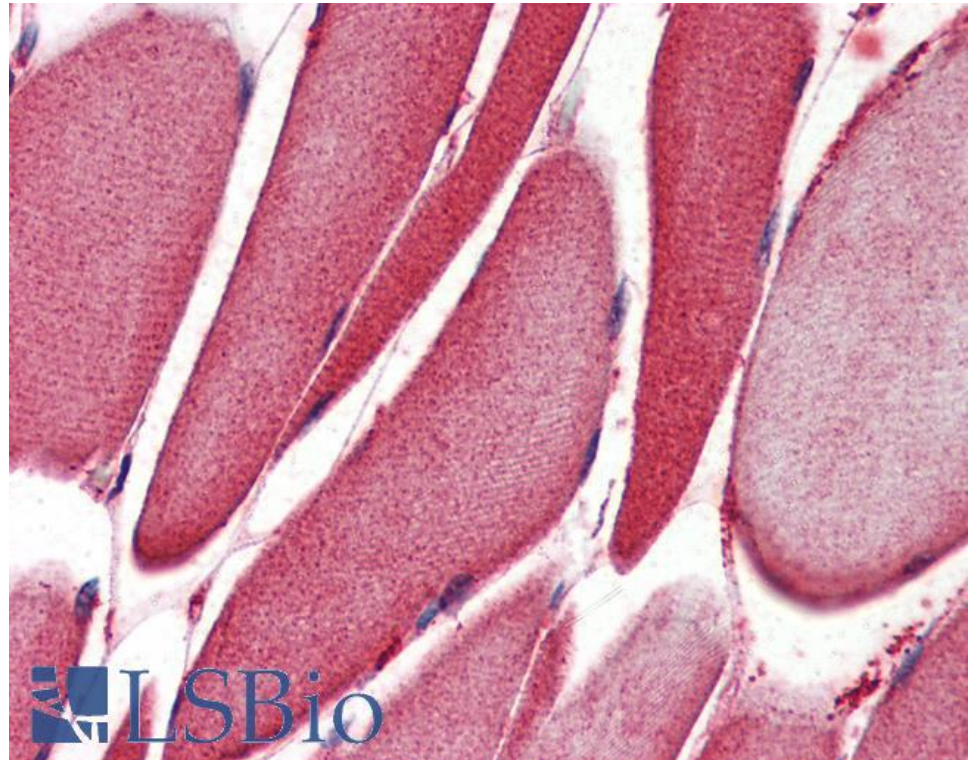
## Species Reactivity

**Tested:** Human

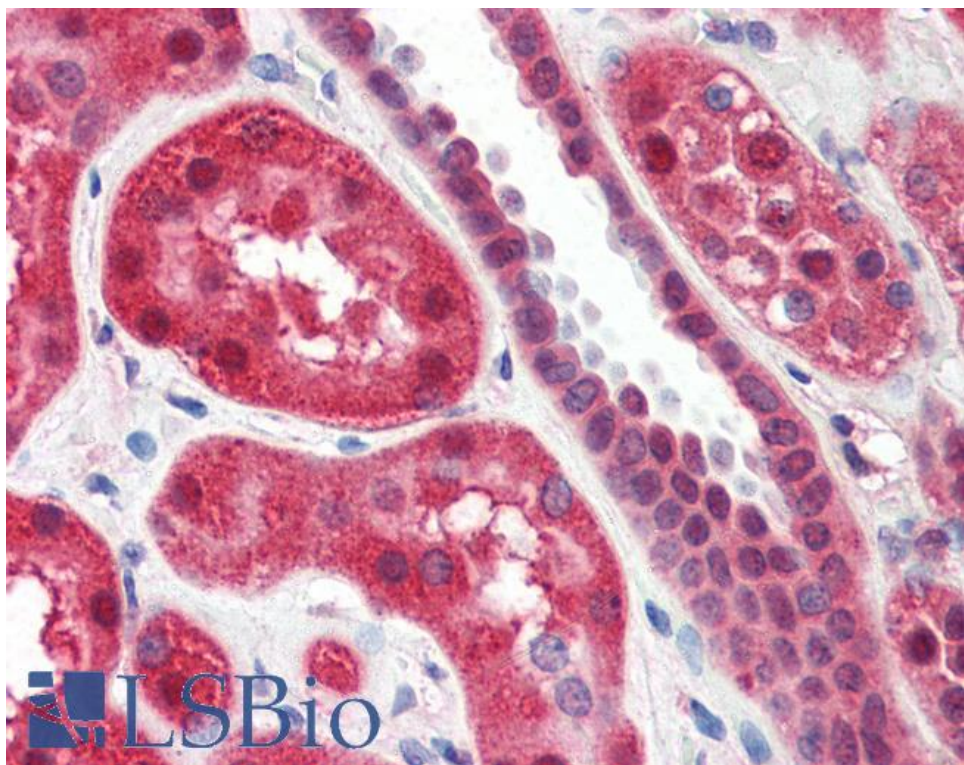
**Expected from sequence similarity:** Human



EB09049 (0.2 $\mu$ g/ml) staining of nuclear HeLa lysate (35 $\mu$ g protein in RIPA buffer). Detected by chemiluminescence.



EB09049 (2 $\mu$ g/ml) staining of paraffin embedded Human Skeletal Muscle. Steamed antigen retrieval with citrate buffer pH 6, AP-staining.



EB09049 (2µg/ml) staining of paraffin embedded Human Kidney. Steamed antigen retrieval with citrate buffer pH 6, AP-staining.