

UK Office

Everest Biotech Ltd

Cherwell Innovation Centre
77 Heyford Park
Upper Heyford
Oxfordshire
OX25 5HD
UK

Enquiries:

info@everestbiotech.com

Sales:

sales@everestbiotech.com

Tech support:

support@everestbiotech.com

Tel: +44 (0)1869 238326

www.everestbiotech.com

**Research Use Only. Not for
diagnostic or therapeutic use.**

EB12364 - Goat Anti-alpha-1-antichymotrypsin (aa222-236) Antibody

Size: 100µg specific antibody in 200µl



Target Protein

Principal Names: SERPINA3, serpin peptidase inhibitor, clade A (alpha-1 antiproteinase, antitrypsin), member 3, AACT, ACT, GIG25, alpha-1-antichymotrypsin, cell growth-inhibiting gene 24/25 protein, growth-inhibiting protein 24, growth-inhibiting protein 25, serine (or cysteine) proteinase inhibitor, clade A, member 3, serpin A3

Official Symbol: SERPINA3

Accession Number(s): NP_001076.2

Human GeneID(s): [12](#)

Immunogen

Peptide with sequence C-DPQDTHQSRFYLSKK, from the internal region of the protein sequence according to NP_001076.2.

Please note the [peptide](#) is available for sale.

Purification and Storage

Purified from goat serum by ammonium sulphate precipitation followed by antigen affinity chromatography using the immunizing peptide.

Supplied at 0.5 mg/ml in Tris saline, 0.02% sodium azide, pH7.3 with 0.5% bovine serum albumin.

Aliquot and store at -20°C. Minimize freezing and thawing.

Applications Tested

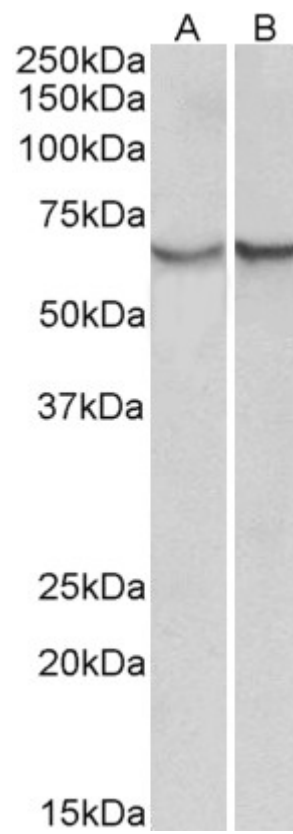
Peptide ELISA: antibody detection limit dilution 1:128000.

Western blot: Approx 65kDa band observed in Human Albumin-depleted Serum and Plasma lysates (calculated MW of 47.7kDa according to NP_001076.2). The observed molecular weight corresponds to the glycosylated form. Recommended concentration: 0.3-1µg/ml.

Species Reactivity

Tested: Human

Expected from sequence similarity: Human



EB12364 (0.3 μ g/ml) staining of albumin-depleted Serum (A) and Plasma(B) lysates (35 μ g protein in RIPA buffer). Primary incubation was 1 hour. Detected by chemiluminescence.